

MATERIAL: SEE B/M  
 DRAWN: TFK  
 SCALE: NONE  
 CHECKED: DEP  
 DATE: 9/15/95



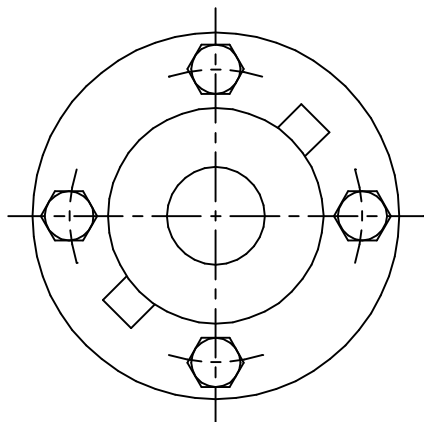
SIGHT FLOW INDICATOR  
 1000-S

Section: T400  
 Bulletin: T400.40  
 Date: 09/01/02  
 Supersedes: 12/01/00

VARIOUS PRESSURES

FILE NO.: T400-40.DWG

THIS DRAWING AND ALL INFORMATION ON IT IS THE PROPERTY OF JACOBY-TARBOX, DIVISION OF THE CLARK-RELIANCE CORPORATION. IT IS CONFIDENTIAL AND IS GIVEN TO YOU FOR A LIMITED PURPOSE AND MUST BE RETURNED UPON REQUEST. NEITHER THIS DRAWING NOR ANY PART OF IT NOR ANY INFORMATION CONCERNING IT MAY BE COPIED, EXHIBITED OR FURNISHED TO OTHERS NOR MAY PHOTOGRAPHS BE TAKEN OF ANY ARTICLE FABRICATED OR ASSEMBLED FROM THIS DRAWING WITHOUT CONSENT OF THE CLARK-RELIANCE CORPORATION.



PARTS LIST

PIECE NO.	NAME OF PART	QUAN.	MATERIAL	COMMENTS
1	HEAD	2	SEE BELOW	
2	BODY	1	CAST IRON	
3	CYLINDER	1	ANN. BOROSILICATE	
4	GASKET **	2		
5	BOLTS	8	STEEL	

\*\*NOTE: AVAILABLE W/ NEOPRENE STANDARD, VITON, SILICONE, AND TEFLON ENVELOPE WITH ONE OF THE ABOVE AS AN INSERT

STANDARD DESIGN MATERIALS:

- HEAD: ASTM A216-WCB (CARBON STEEL)
- ASTM A351-CF8M (316 SS)
- ASTM B62 (BRONZE)
- ASTM A126 CLASS B (CAST IRON)

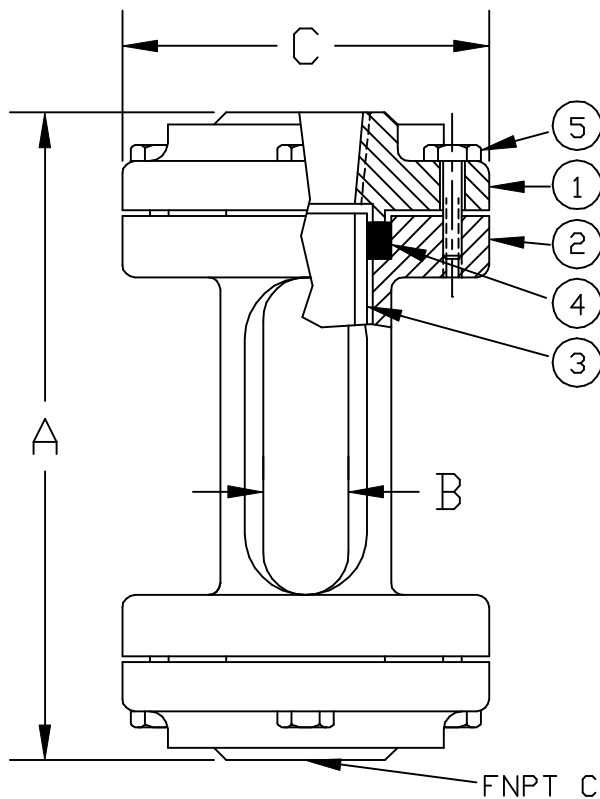
- BODY: ASTM A-278 CLASS 30 (IRON)
- \*BODY IS NOT A WETTED COMPONENT
- FASTENERS: SAE GRADE 5 (ZINC PLATED STEEL)
- INDICATOR: N/A

OPTIONAL ALLOYS FURNISHED UPON REQUEST

OPTIONAL FEATURES:  
 304/316 SS TRIM AVAILABLE

PRESSURE/TEMP. RATINGS		
TEMP F	ALL MATERIALS *	
	1/4 TO 1-1/2	2
-20 TO 100	150	100
150	150	100
200	150	100
250	150	100
300	150	100
350	150	100
400	150	100
450	150	100

\* BRONZE AND CAST IRON ARE NOT RECOMMENDED FOR SERVICE ABOVE 400 F



STYLE 1000-S

FNPT CONNECTIONS

DIMENSIONS

PIPE SIZE	A		B		C		APPROX. WGT.		PRESSURE RATING	
	IN.	mm	IN.	mm	IN.	mm	LBS.	KGS.	PSIG	BAR
1/4	7.0	178	.88	22	2.75	70	4	1.8	150	10.3
1/2	7.0	178	.88	22	2.75	70	4	1.8	150	10.3
3/4	7.0	178	1.12	28	3.12	79	5	2.3	150	10.3
1	7.0	178	1.12	28	3.12	79	5	2.3	150	10.3
1-1/4	7.63	194	1.50	38	4.12	105	9	4.1	150	10.3
1-1/2	7.63	194	1.50	38	4.12	105	9	4.1	150	10.3
2	7.63	194	3.0	76	5.25	133	14	6.4	100	7.1