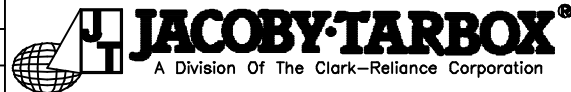


MATERIAL: SEE B/M  
 DRAWN: TFK  
 SCALE: NONE  
 CHECKED: DEP  
 DATE: 09/15/95

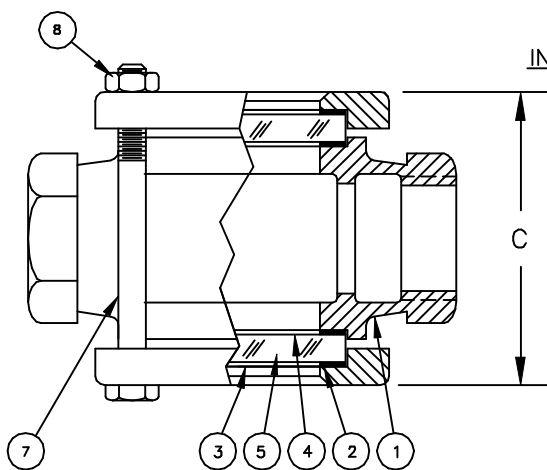


SIGHT FLOW INDICATOR  
 STYLE 100-SFA, 200-SFA, 300-SFA

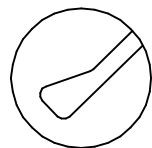
Section: T400  
 Bulletin: T400.16  
 Date: 12/01/00  
 Supersedes: 11/10/98

150 ASME CLASS MODELS

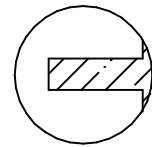
FILE NO.: T400-16.DWG



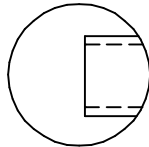
INDICATOR OPTIONS



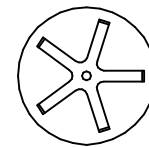
FLAPPER   
 STYLE 100-SFA



PTFE FLUTTER   
 STYLE 100-SFA-FLTR



DRIP TUBE

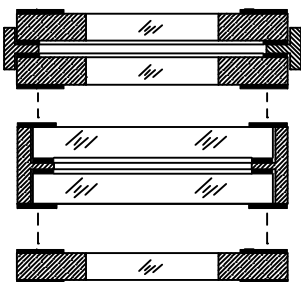


PTFE ROTOR   
 STYLE 300-SFA

| PARTS LIST |              |       |              |          |
|------------|--------------|-------|--------------|----------|
| PIECE NO.  | NAME OF PART | QUAN. | MATERIAL     | COMMENTS |
| 1          | BODY         | 1     | SEE BELOW    |          |
| 2          | RETAINER     | 2     | STEEL        |          |
| 3          | CUSHION      | 2     | FIBER        |          |
| 4          | SEAL GASKET  | 2     |              |          |
| 5          | WINDOW       | 2     | BOROSILICATE |          |
| 6          | NUT          | 4     | STEEL        |          |
| 7          | BOLT         | 4     | STEEL        |          |
| 8          | INDICATOR    | 1     |              |          |

THIS DRAWING AND ALL INFORMATION ON IT IS THE PROPERTY OF JACOBY-TARBOX, DIVISION OF THE CLARK-RELIANCE CORPORATION. IT IS CONFIDENTIAL AND IS GIVEN TO YOU FOR A LIMITED PURPOSE AND MUST BE RETURNED UPON REQUEST. NEITHER THIS DRAWING NOR ANY PART OF IT NOR ANY INFORMATION CONCERNING IT MAY BE COPIED, EXHIBITED OR FURNISHED TO OTHERS NOR MAY PHOTOGRAPHS BE TAKEN OF ANY ARTICLE FABRICATED OR ASSEMBLED FROM THIS DRAWING WITHOUT CONSENT OF THE CLARK-RELIANCE CORPORATION.

- OPTIONS
- DUAL UNIGLAS WINDOWS
  - FULL VIEW DUAL WINDOWS
  - UNIGLAS WINDOW
- Factory Mutual System Approved

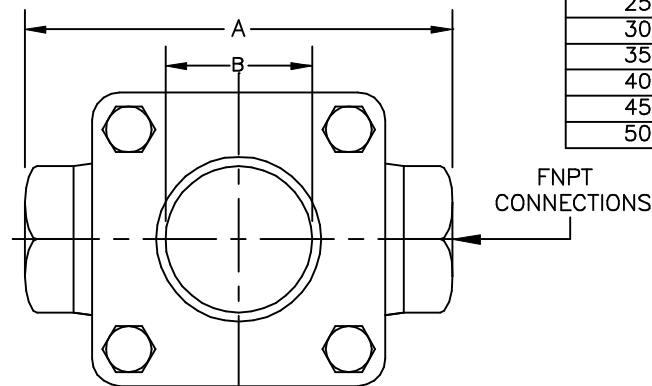


ASME CLASS PRESSURE/TEMP RATINGS

| TEMP F     | 150 CLASS |        |        |      |
|------------|-----------|--------|--------|------|
|            | STEEL     | 316 SS | BRONZE | IRON |
| -20 TO 100 | 285       | 275    | 225    | 200  |
| 150        | 270       | 260    | 225    | 200  |
| 200        | 260       | 240    | 210    | 190  |
| 250        | 245       | 230    | 195    | 175  |
| 300        | 230       | 215    | 180    | 165  |
| 350        | 215       | 205    | 165    | 150  |
| 400        | 200       | 195    | 150    | 140  |
| 450        | 185       | 180    | N/R    | N/R  |
| 500        | 170       | 170    | N/R    | N/R  |

- STANDARD DESIGN MATERIALS:
- BODY: ASTM A216-WCB (CARBON STEEL)
  - ASTM A351-CF8M (316 SS)
  - ASTM B62 (BRONZE)
  - ASTM A126 CLASS B (CAST IRON)

- RETAINER: ASTM A516 GR. 70 (STEEL)  
 ASTM A216-WCB (STEEL)  
 FASTENERS: A354-BD/A194-2H (STEEL)  
 INDICATOR: 316 SS FLAP&DRIP, PTFE FLUTTER
- 304/316 SS TRIM AVAILABLE  
 OPTIONAL ALLOYS FURNISHED UPON REQUEST



PLAIN   
 STYLE 100-SFA (NF)

| PIPE SIZE     | DIMENSIONS |     |        |    |       |     | APPROX. WGT. |      |
|---------------|------------|-----|--------|----|-------|-----|--------------|------|
|               | A          |     | B      |    | C     |     | LBS.         | KGS. |
|               | IN.        | mm  | IN.    | mm | IN.   | mm  |              |      |
| 1/8, 1/4, 3/8 | 3          | 76  | 27/32  | 21 | 3     | 76  | 3            | 1.4  |
| 1/2 & 3/4     | 3-3/4      | 95  | 1-1/4  | 32 | 4-3/4 | 121 | 4            | 1.8  |
| 1             | 4-1/4      | 108 | 1-7/32 | 31 | 5-1/2 | 140 | 6            | 2.7  |
| 1-1/4 & 1-1/2 | 5-1/2      | 140 | 2-7/32 | 56 | 7     | 178 | 13           | 5.9  |
| 2             | 6-1/4      | 159 | 2-1/2  | 64 | 9-7/8 | 251 | 17           | 7.7  |