

MATERIAL: SEE B/M  
 DRAWN: TFK CHECKED: DEP  
 SCALE: NONE DATE: 09/15/95  
 REV.

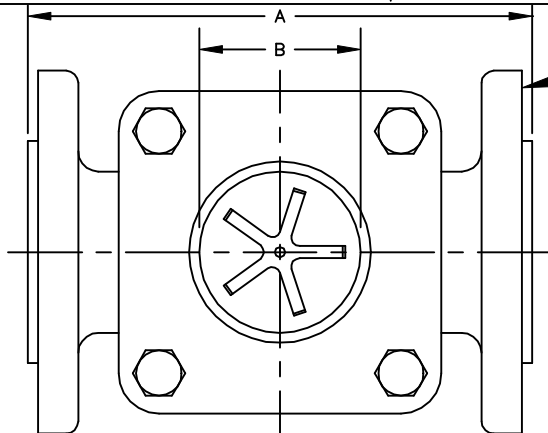


SIGHT FLOW INDICATOR  
 STYLE 960-FA

Section: T400  
 Bulletin: T400.03  
 Date: 12/01/00  
 Supersedes: 06/01/97

150 ASME CLASS MODEL

FILE NO.: T400-03-8in-910.DWG



FLANGE CONNECTION PER ASME B16.5 CL150 RF

THIS DRAWING AND ALL INFORMATION ON IT IS THE PROPERTY OF JACOBY-TARBOX, DIVISION OF THE CLARK-RELIANCE CORPORATION. IT IS CONFIDENTIAL AND IS GIVEN TO YOU FOR A LIMITED PURPOSE AND MUST BE RETURNED UPON REQUEST. NEITHER THIS DRAWING NOR ANY PART OF IT NOR ANY INFORMATION CONCERNING IT MAY BE COPIED, EXHIBITED OR FURNISHED TO OTHERS NOR MAY PHOTOGRAPHS BE TAKEN OF ANY ARTICLE FABRICATED OR ASSEMBLED FROM THIS DRAWING WITHOUT CONSENT OF THE CLARK-RELIANCE CORPORATION.

PARTS LIST

PIECE NO.	NAME OF PART	QTY	MATERIAL	COMMENTS
1	BODY	1	SEE BELOW	
2	CUSHION	2	FIBER	
3	SEAL GASKET	2		
4	RETAINER	2	STEEL	
5	WINDOW	2	BOROSILICATE	
6	BOLT	4	STEEL	
7	NUT	4	STEEL	
8	PIN	1	316 SS	
9	ROTOR	1	TFE	

STANDARD DESIGN MATERIALS:

BODY: ASTM A-216 WCB (CARBON STEEL)

ASTM A-351 CF8M (316 SS)

ASTM B-62 (BRONZE)

ASTM A-126 CLASS B (CAST IRON)

RETAINER: ASTM A-516 GR. 70 (STEEL)

FASTENERS: A354-BD/A194-2H (STEEL)

INDICATOR: PTFE ROTOR

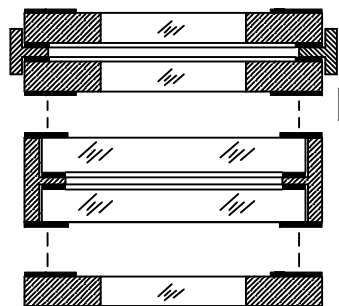
OPTIONAL ALLOYS FURNISHED UPON REQUEST  
 304/316 TRIM AVAILABLE

CAST IRON & BRONZE FLANGES ARE 125/150#F.F. PER ANSI B16.1 AND B16.24  
 REDUCE "A" DIMENSION 1/8. BRONZE & IRON AVAILABLE UP TO 6" SIZE.

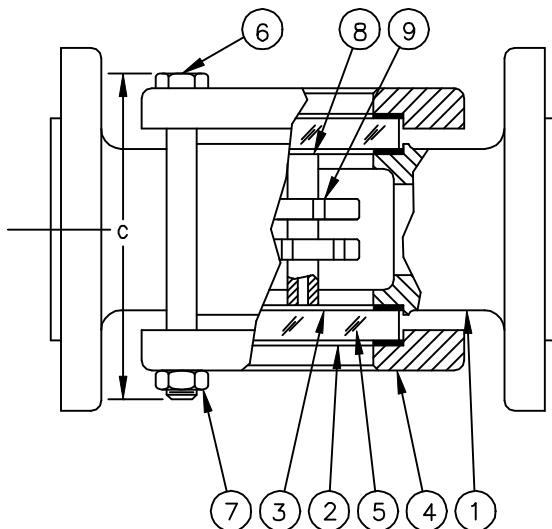
ANSI CLASS PRESSURE/TEMP RATINGS

TEMP F	150 CLASS			
	STEEL	316 SS	BRONZE	IRON
-20 TO 100	285	275	225	200
150	270	260	225	200
200	260	240	210	190
250	245	230	195	175
300	230	215	180	165
350	215	205	165	150
400	200	195	150	140
450	185	180	N/R	N/R
500	170	170	N/R	N/R

- OPTIONS
- DUAL UNIGLAS WINDOWS
  - FULL VIEW DUAL WINDOWS
  - UNIGLAS WINDOW



Factory Mutual System Approved



DIMENSIONS

PIPE SIZE	A		B		C		APPROX. WGT.		# BOLTS
	IN.	MM	IN.	MM	IN.	MM	LBS.	KGS.	
1/2&3/4	4-5/8	118	1-1/8	28	4	102	6	2.7	4
1	5-1/2	140	1-1/4	32	4-1/2	114	10	4.5	4
1-1/2	6-7/8	175	2	51	6-1/16	153	18	8.1	4
2	8-1/8	206	2-1/2	64	7-1/16	179	28	12.7	4
2-1/2	10	254	3-3/16	81	9-3/16	233	62	25.4	4
3	10	254	3-3/16	81	9-3/16	233	62	25.4	4
4	11-3/4	298	4-3/8	111	11-3/4	299	94	42.6	4
6	15	381	6-7/8	175	15	381	160	72.5	4
8	16-1/8	410	8-1/4	210	16-1/2	419	314	142.7	4
10	24-3/4	630	11	279	23-11/16	602	405	183.7	16
12	25-3/4	654	11	279	23-11/16	602	460	208.7	16
14	26-3/4	679	11	279	27	686	505	229	16
16	26-3/4	679	11	279	27	686	555	251.7	16