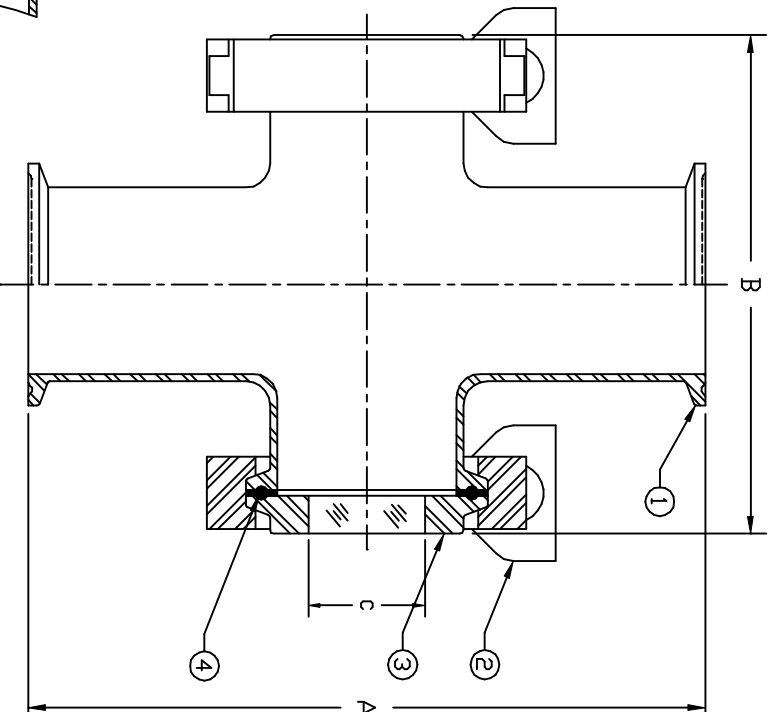
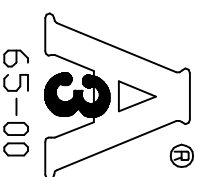


THIS DRAWING AND ALL INFORMATION ON IT IS THE PROPERTY OF JACOBY-TARBOX, DIVISION OF THE CLARK-RELIANCE CORPORATION. IT IS CONFIDENTIAL AND IS GIVEN TO YOU FOR A LIMITED PURPOSE AND MUST BE RETURNED UPON REQUEST. NEITHER THIS DRAWING NOR ANY PART OF IT NOR ANY INFORMATION CONCERNING IT MAY BE COPIED, EXHIBITED OR FURNISHED TO OTHERS NOR MAY PHOTOGRAPHS BE TAKEN OF ANY ARTICLE FABRICATED OR ASSEMBLED FROM THIS DRAWING WITHOUT CONSENT OF THE CLARK-RELIANCE CORPORATION.

USDA DAIRY ACCEPTED



| PRESSURE/TEMP. RATINGS | | | |
|------------------------|----------|---------|-----|
| TEMP | 150 PSIG | MODELS | |
| F | 304 SS | 316L SS | |
| -425 TD 100 | 150 | 150 | 150 |
| 150 | 150 | 150 | 150 |
| 200 | 150 | 150 | 150 |
| 250 | 150 | 150 | 150 |
| 300 | 150 | 150 | 150 |
| 350 | 150 | 150 | 150 |
| 400 | 150 | 150 | 150 |
| 450 | 150 | 150 | 150 |

SPECIAL UNIT-
PLASTIC WINDOW
SECTION

ACRYLIC WINDOW
MAX TEMP 180°F

POLYCARBONATE WINDOW
MAX TEMP 250°F

| ITEM | NAME | QTY. | MATERIAL |
|------|---------------------------|------|----------|
| 1 | BODY | 1 | |
| 2 | CLAMP | 2 | 304 SS |
| 3 | UNI-SAN 6500 | 2 | |
| 4 | SANITARY GASKET | 2 | |
| 5 | SPECIAL ACRYLIC WINDOW | 1 | |

| A | B | C | D | PRESSURE (MAX) |
|-------------|-------------|-------------|-------------|-------------------|
| inches (mm) | inches (mm) | inches (mm) | inches (mm) | |
| 5.00 (127) | 5.12 (130) | 0.9 (23) | 0.86 (22) | 150 PSIG |
| 5.50 (140) | 5.12 (130) | 0.9 (23) | 1.36 (35) | 150 PSIG |
| 7.00 (178) | 5.12 (130) | 1.2 (31) | 1.86 (47) | 150 PSIG |
| 7.00 (178) | 6.00 (152) | 1.5 (38) | 2.36 (60) | 150 PSIG |
| 7.50 (191) | 6.12 (155) | 2.0 (51) | 2.86 (73) | 150 PSIG |
| 9.00 (229) | 7.12 (181) | 3.0 (76) | 3.81 (97) | 150 PSIG |

* SIZES ARE STANDARD TUBE O.D.'S IN INCHES

SPECIFICATIONS

Materials:

Heads: 304 SS, 316L SS to ASTM A269

Window: UNI-SAN 6500 (Glass fused to Stainless Steel (A240,A182,A479)
or Hastelloy-C (B574,B595) Ring.

Gaskets: Standard 3A Sanitary Gaskets

Clamps: 304 SS

Surface Finish:

Internal: 32 Ra (150 Grit, .8 micrometers) Standard
(Finer finishes available upon request.)

External: 32 Ra (150 Grit, .8 micrometers) Standard