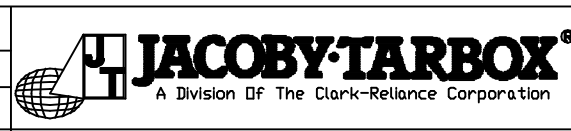


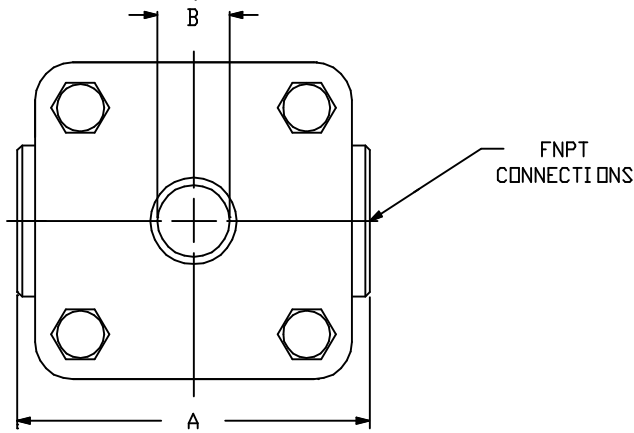
MATERIAL: PER BOM  
 DRAWN: TFK  
 CHECKED: DEP  
 SCALE: NONE  
 DATE: 9-15-95



SIGHT FLOW INDICATOR  
 S-100HP-3000, S-200HP-3000,  
 S-300HP-3000, S-400HP-3000

Section: T400  
 Bulletin: T400.20  
 Date: 09/01/93  
 Supersedes: 12/05/91

3000 PSIG MODELS FILE NO.: T400-20.DWG

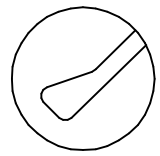


PARTS LIST				
PIECE NO.	NAME OF PART	QUAN.	MATERIAL	COMMENTS
1	BODY	1	SEE BELOW	
2	RETAINER	2	STEEL	
3	CUSHION	2	FIBER	
4	SEAL GASKET	2		
5	WINDOW	2	BOROSILICATE	
6	BOLT	4	STEEL	
7	NUT	4	STEEL	
8	INDICATOR	1		
10	WINDOW HOLDER	2	STEEL	

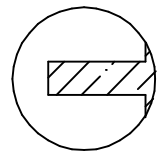
THIS DRAWING AND ALL INFORMATION ON IT IS THE PROPERTY OF JACOBY-TARBOX, DIVISION OF THE CLARK-RELIANCE CORPORATION. IT IS CONFIDENTIAL AND IS GIVEN TO YOU FOR A LIMITED PURPOSE AND MUST BE RETURNED UPON REQUEST. NEITHER THIS DRAWING NOR ANY PART OF IT NOR ANY INFORMATION CONCERNING IT MAY BE COPIED, EXHIBITED OR FURNISHED TO OTHERS NOR MAY PHOTOGRAPHS BE TAKEN OF ANY ARTICLE FABRICATED OR ASSEMBLED FROM THIS DRAWING WITHOUT CONSENT OF THE CLARK-RELIANCE CORPORATION.

INDICATOR OPTIONS ⑧ \* S-400HP-600 HAS ONLY ONE WINDOW

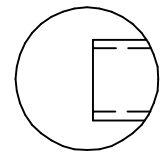
- S-100HP(NF)-3000 PLAIN
- WINDOW OPTIONS**
- DUAL UNIGLAS WINDOWS
- FULL VIEW DUAL WINDOWS
- UNIGLAS WINDOW



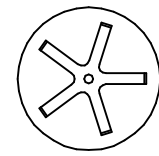
FLAPPER   
S-100HP-3000



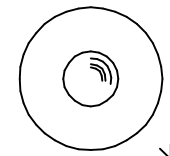
PTFE FLUTTER   
S-100HP-FLTR-3000



DRIP TUBE   
S-200HP-3000



PTFE ROTOR   
S-300HP-3000



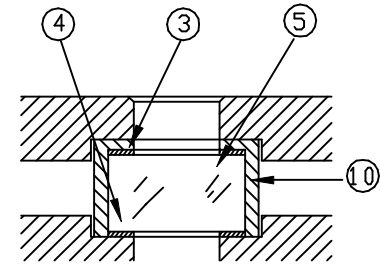
BALL  \*  
S-400HP-3000



STANDARD DESIGN MATERIALS:

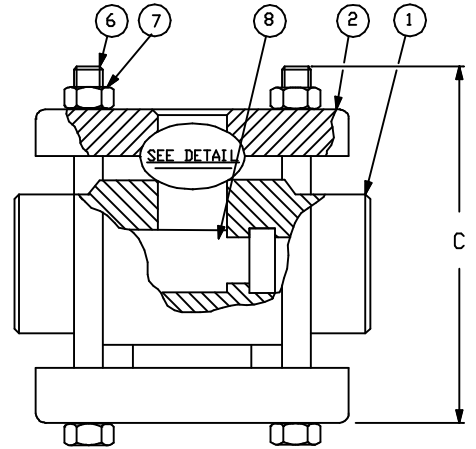
- BODY: ASTM A216-WCB (CARBON STEEL)
- ASTM A351-CF8M (316 SS)
- RETAINER: ASTM A516 GR.70 (STEEL)
- FASTENERS: A193-B7 / A194-2H
- INDICATOR: 316 SS FLAP&DRIP  
: PTFE FLUTTER, ROTOR, BALL

304/316 SS TRIM AVAILABLE  
 OPTIONAL ALLOYS FURNISHED UPON REQUEST



TYPICAL DETAIL  
3000# UNITS

TEMP F	P/T RATINGS	
	3000 STEEL	316 SS
-20 TO 100	3000	3000
150	3000	3000
200	3000	3000
250	3000	3000
300	3000	3000
350	3000	3000
400	3000	3000
450	3000	3000
500	3000	3000



PIPE SIZE	DIMENSIONS						APPROX. WGT.	
	A		B		C		LBS.	KGS.
	IN.	mm	IN.	mm	IN.	mm		
1/8 - 3/8	3.75	95	0.75	20	6.00	152	12	5.5
1/2 & 3/4	4.50	114	1.00	25	7.00	178	13	5.9
1	4.88	121	1.25	32	7.00	178	14	6.4
1-1/4 & 1-1/2	6.00	152	1.50	38	10.00	254	34	15.5
2	7.25	184	2.00	51	9.50	241	48	21.8