

MATERIAL: SEE B/M
 DRAWN: MBV CHECKED: DEP
 SCALE: NONE DATE: 9/6/00

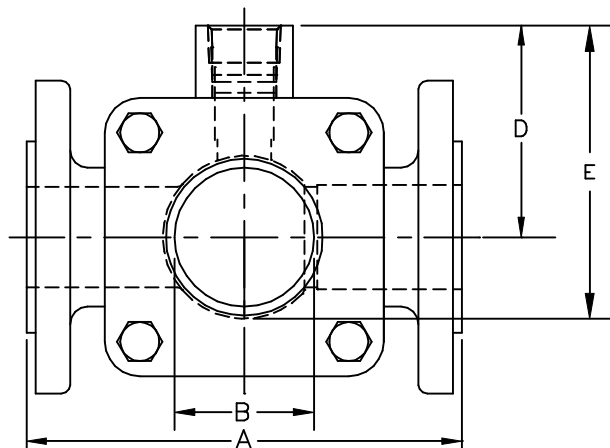
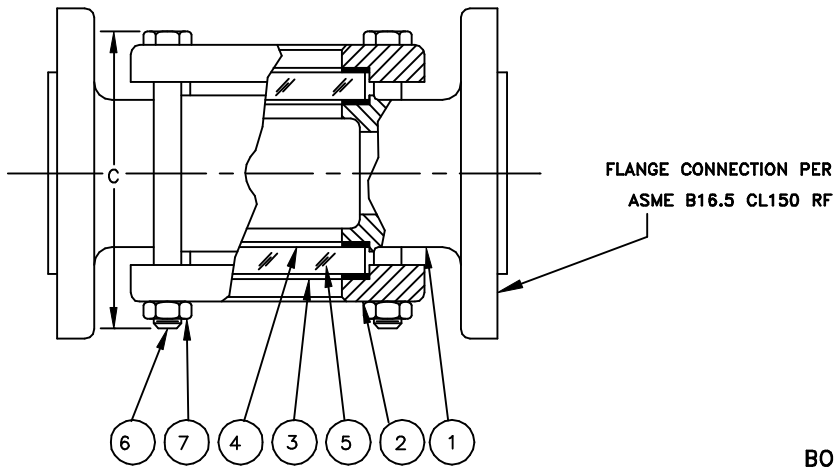


SIGHT FLOW INDICATOR
 STYLE 910-FA & 608-FA W/ COUPLING

Section: T400
 Bulletin: T400.11
 Date: 12/01/00
 Supersedes: 9/6/00

150 AMSE CLASS MODELS

FILE NO.: T400-11.DWG



STYLE 910-FA (NF)-COUP-(SIZE) □

PARTS LIST

| PIECE NO. | NAME OF PART | QUAN. | MATERIAL | COMMENTS |
|-----------|--------------|-------|--------------|----------|
| 1 | BODY | 1 | SEE BELOW | |
| 2 | RETAINER | 2 | STEEL | |
| 3 | CUSHION | 2 | FIBER | |
| 4 | SEAL GASKET | 2 | | |
| 5 | WINDOW | 2 | BOROSILICATE | |
| 6 | BOLT | 4 | STEEL | |
| 7 | NUT | 4 | STEEL | |
| 8 | INDICATOR | | | |

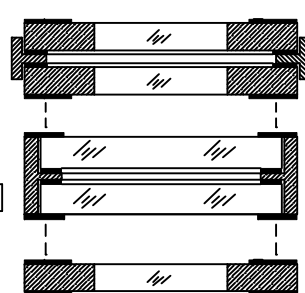
THIS DRAWING AND ALL INFORMATION ON IT IS THE PROPERTY OF JACOBY-TARBOX, DIVISION OF THE CLARK-RELIANCE CORPORATION. IT IS CONFIDENTIAL AND IS GIVEN TO YOU FOR A LIMITED PURPOSE AND MUST BE RETURNED UPON REQUEST. NEITHER THIS DRAWING NOR ANY PART OF IT NOR ANY INFORMATION CONCERNING IT MAY BE COPIED, EXHIBITED OR FURNISHED TO OTHERS NOR MAY PHOTOGRAPHS BE TAKEN OF ANY ARTICLE FABRICATED OR ASSEMBLED FROM THIS DRAWING WITHOUT CONSENT OF THE CLARK-RELIANCE CORPORATION.

ASME CLASS P/T RATINGS

| TEMP F | 150 CLASS | |
|------------|-----------|--------|
| | STEEL | 316 SS |
| -20 TO 100 | 285 | 275 |
| 150 | 270 | 260 |
| 200 | 260 | 240 |
| 250 | 245 | 230 |
| 300 | 230 | 215 |
| 350 | 215 | 205 |
| 400 | 200 | 195 |
| 450 | 185 | 180 |
| 500 | 170 | 170 |

STANDARD DESIGN MATERIALS:

- BODY: ASTM A216-WCB (CARBON STEEL) □
 ASTM A351-CF8M (316 SS) □
- RETAINER: ASTM A216-WCB (STEEL) (1/2" - 6")
 ASTM A516 GR. 70 (STEEL) (8" & UP)
- FASTENERS: A354-BD/A194-2H (STEEL)
- INDICATOR: 316 SS FLAP & DRIP, PTFE FLUTTER
 304/316 SS TRIM AVAILABLE
- OPTIONAL ALLOYS FURNISHED UPON REQUEST

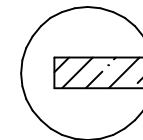


WINDOW OPTIONS

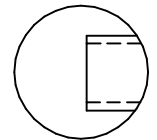
- DUAL UNIGLAS WINDOWS □
- FULL VIEW DUAL WINDOWS □
- UNIGLAS WINDOW □

8

INDICATOR OPTIONS



PTFE FLUTTER □



DRIP TUBE □

STYLE 910-FA-FLTR-COUP-

STYLE 608-FA-COUP-

DIMENSIONS

| PIPE SIZE | A | | B | | C | | "D & E" BY COUPLING SIZE | | | | | | | | | | | | APPROX. WGT. | |
|-----------|--------|-----|--------|-----|----------|-----|--------------------------|------|-------|------|---------------|------|-------|------|-------------|------|-------|------|--------------|------|
| | | | | | | | 1/2" COUPLING | | | | 3/4" COUPLING | | | | 1" COUPLING | | | | | |
| | IN. | MM | IN. | MM | IN. | MM | D | | E | | D | | E | | D | | E | | LBS. | KGS. |
| 1 | 5-5/8 | 143 | 1-1/4 | 32 | 4-1/4 | 108 | 1.89 | 48.0 | 2.92 | 74.2 | 1.81 | 46.0 | 2.84 | 72.1 | 1.77 | 45.0 | 2.80 | 71.1 | 8 | 3.6 |
| 1-1/2 | 6-1/2 | 165 | 2 | 51 | 5-3/4 | 146 | 2.55 | 64.8 | 4.08 | 104 | 2.43 | 61.7 | 3.96 | 100 | 2.61 | 66.3 | 4.14 | 105 | 15 | 6.8 |
| 2 | 7-7/8 | 200 | 2 | 51 | 6-3/8 | 162 | 2.85 | 72.4 | 4.54 | 115 | 2.86 | 72.6 | 4.55 | 116 | 2.97 | 75.4 | 4.66 | 118 | 22 | 10 |
| 2-1/2 & 3 | 9-3/8 | 238 | 3-3/16 | 81 | 7-15/16 | 202 | 3.69 | 93.7 | 6.16 | 156 | 3.72 | 94.5 | 6.19 | 157 | 3.85 | 97.8 | 6.32 | 160 | 44 | 20 |
| 4 | 11 | 279 | 4-3/8 | 111 | 9-1/2 | 241 | 4.36 | 111 | 7.49 | 190 | 4.39 | 112 | 7.52 | 191 | 4.28 | 109 | 7.41 | 188 | 67 | 30.4 |
| 6 | 14-1/4 | 362 | 6 | 152 | 12-11/16 | 322 | 5.72 | 145 | 10.16 | 258 | 5.76 | 146 | 10.20 | 259 | 5.69 | 144 | 10.13 | 257 | 155 | 70.3 |