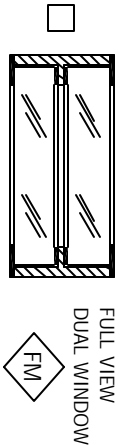
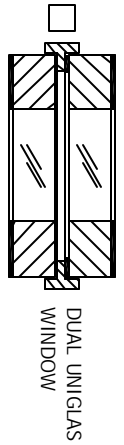
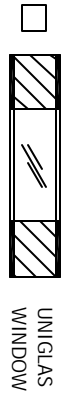
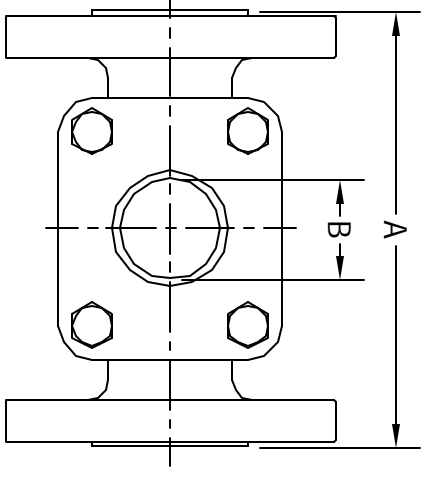


THIS DRAWING AND ALL INFORMATION ON IT IS THE PROPERTY OF THE CLARK-RELIANCE CORPORATION. IT IS CONFIDENTIAL AND IS GIVEN TO YOU FOR A LIMITED PURPOSE AND MUST BE RETURNED UPON REQUEST. NEITHER THIS DRAWING NOR ANY PART OF IT NOR ANY INFORMATION CONCERNING IT MAY BE COPIED, EXHIBITED OR FURNISHED TO OTHERS NOR MAY PHOTOGRAPHS BE TAKEN OF ANY ARTICLE FABRICATED OR ASSEMBLED FROM THIS DRAWING WITHOUT CONSENT OF THE CLARK-RELIANCE CORPORATION.

JACOBY-TARBOX
 Manufactured By The Clark-Reliance Corporation
 16633 FOLTZ PARKWAY
 STRONGSVILLE, OH 44149 USA
 PH: +1-440-572-1500
 www.clark-reliance.com

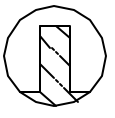
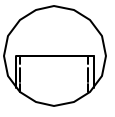
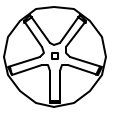
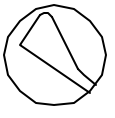
SIGHT FLOW INDICATOR
MODEL 910-FA, 608-FA, 935-FA
ASME CLASS 150 RATED

SECTION: 14DX
 BULLETIN: 14DX.02
 DATE: 07/29/09
 SUPERSEDES: 09/01/03
 FILE NO.: 14DX-02.DWG
 DRAWN: FWK CHECKED: DEP
 SCALE: NONE



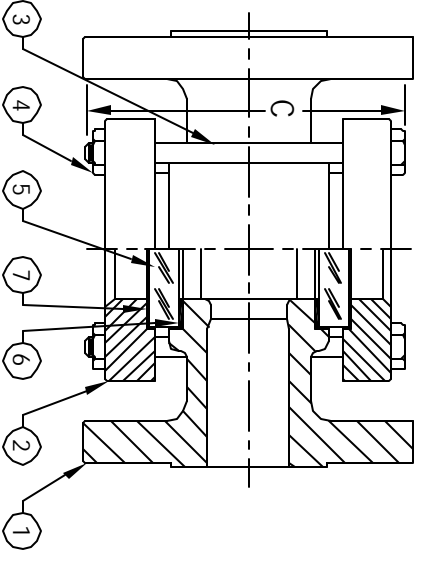
APPROVED

PARTS LIST		STANDARD DESIGN MATERIALS	
PIECE NO.	PART NAME	QTY.	
1	BODY (SEE NOTE (1))	1	ASTM A216-WCB (CARBON STEEL) ASTM A351-C18M (316 SS) ASTM B62 (BRONZE)
2	RETAINER (2)	2	ASTM A216-WCB (CARBON STEEL) (1/2" - 6") ASTM A516 GR.70 (CARBON STEEL) (8" & UP)
3	BOLT (2)	4	ASTM A354-BD (ALLOY STEEL)
4	NUT (2)	4	ASTM A194-2H (ALLOY STEEL)
5	WINDOW (4)	2	TEMPERED BOROSILICATE
6	SEAL GASKET (5)	2	NEOPRENE
7	CUSHION GASKET	2	FIBER
8	INDICATOR	1	FLAPPER (316SS) DRIP TUBE (316SS) ROTOR (PTFE) FLUTTER (PTFE)



NO INDICATOR
MODEL 910-FA(NI)

ASME PRESSURE / TEMP RATINGS (PSIG / ° F)			
CLASS 150			
TEMP	STEEL	316 SS	BRONZE
-20 TO 100	285	275	225
150	270	255	225
200	260	235	210
250	245	225	195
300	230	215	180
350	215	205	165
400	200	195	150
450	185	180	UNRATED
500	170	170	UNRATED



NOTES: (REFERENCE PARTS LIST)

(1) a. ADDITIONAL ALLOYS AVAILABLE PER REQUEST
 b. OPTIONAL PFA (TEFLON) LINING PER T400.10
 c. BRONZE AVAILABLE TO 8" SIZE MAX
 d. BRONZE FLANGES MACHINED PER ANSI B16.24 CLASS 150 FF

(2) ADDITIONAL ALLOYS AVAILABLE PER REQUEST

(3) BOLT & NUT QUANTITIES FOR 10" SIZE UNITS AND LARGER INCREASE TO (16) EACH

(4) a. OPTIONAL MATERIALS AVAILABLE PER PROCESS CONDITIONS
 b. ADDITIONAL WINDOW OPTIONS AVAILABLE
 SEE SIDE SECTION FOR DETAILS

(5) COMMON OPTIONAL SEAL MATERIALS AVAILABLE
 PTFE GRAPHITE FIBER

DESIGNED IN ACCORDANCE WITH ASME B31.1 & B31.3 FOR PRESSURE VERSUS TEMPERATURE RATINGS USING ONLY LISTED MATERIALS IN FABRICATION, WHEN APPLICABLE

DIMENSIONS											
FLANGE SIZE	A (*)			B			C (**)			APPROX. WEIGHT	
	IN	DN	mm	IN	mm	IN	mm	IN	mm		LBS
1/2	15	4.62	118	1.12	28	4.00	102	6.00	152	6.00	2.70
3/4	20	4.62	118	1.12	28	4.00	102	6.00	152	6.00	2.70
1	25	5.62	143	1.25	32	4.50	114	8.00	178	8.00	3.60
1 1/2	40	6.50	165	2.00	51	5.88	146	15.00	229	15.00	6.80
2	50	7.88	200	2.00	51	6.25	152	22.00	275	22.00	10.00
2 1/2	65	9.38	238	3.18	81	8.50	203	44.00	397	44.00	20.00
3	80	9.38	238	3.18	81	8.50	203	44.00	397	44.00	20.00
4	100	11.00	279	4.38	111	10.50	260	67.00	530	67.00	30.40
6	150	14.25	362	6.88	175	14.75	343	155.00	703	155.00	70.30
8	200	16.12	410	8.25	210	17.50	419	230.00	1043	230.00	104.30
10	250	24.75	630	11.00	279	24.12	613	405.00	1837	405.00	183.70
12	300	25.75	654	11.00	279	24.12	613	460.00	2087	460.00	208.70
14	350	26.75	679	11.00	279	27.38	695	505.00	2290	505.00	229.00
16	400	26.75	679	11.00	279	27.38	695	555.00	2571	555.00	257.10

(*) FOR IRON & BRONZE BODIES, REDUCE "A" DIMENSION BY 1/8"
 (***) STANDARD BOLT LENGTH SHOWN. OPTIONAL WINDOW MATERIALS OR USE OF STUDS MAY INCREASE LENGTH