



# JACOBY-TARBOX®

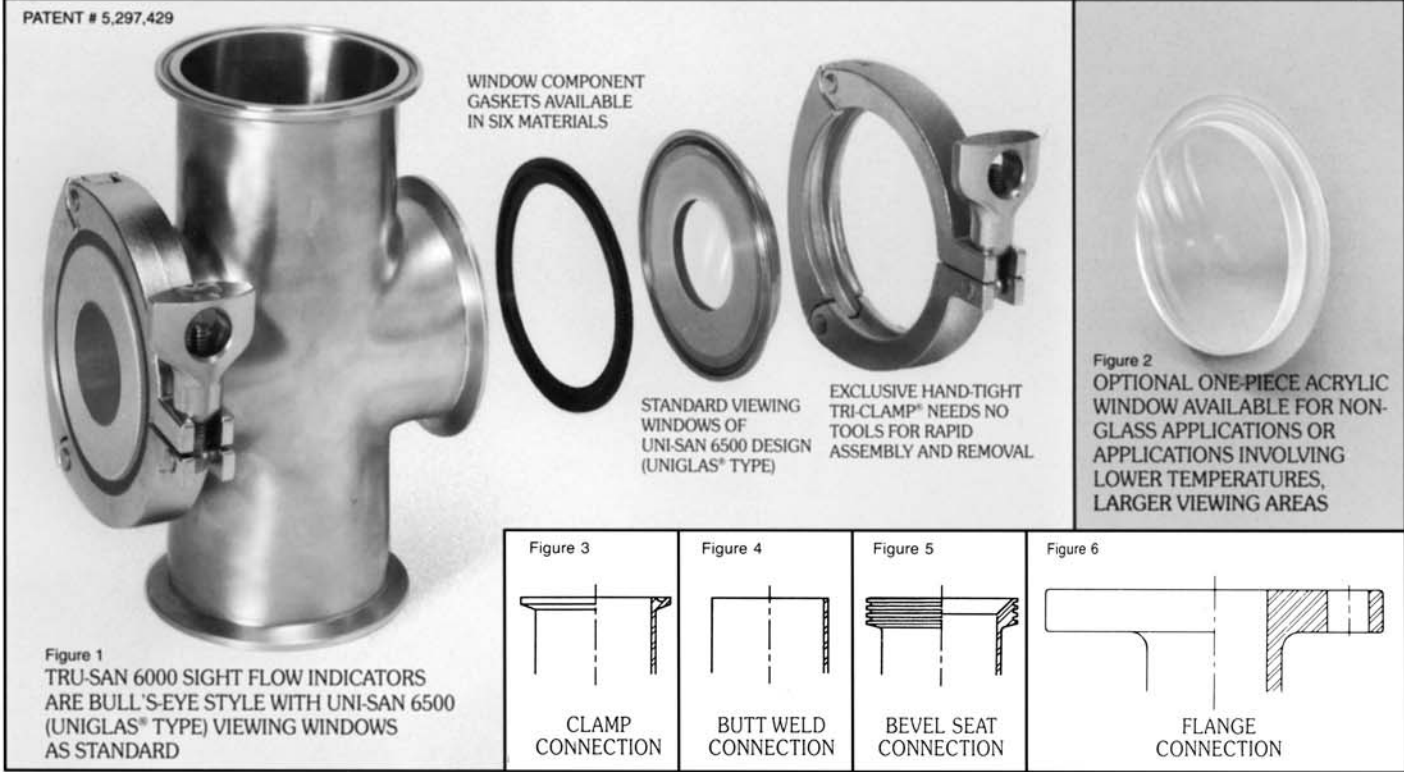
A Product Line of The Clark-Reliance Corporation

Over 80 years of Quality!



## Sight Flow Indicators Tru-San™ 6000: Sanitary USDA Dairy Accepted

Section: T100  
Bulletin: T100.45  
Date: 8/03  
Supersedes: T100.45 (98)



### SAFE, DURABLE, CLEAN VIEWING OF LIQUID, POWDER AND BULK SOLID SYSTEM FLOWS

Jacoby-Tarbox TRU-SAN 6000 Sight Flow Indicators are manufactured specifically for food handling, pharmaceutical and other processing systems where cleanliness and sanitary considerations are paramount.

All TRU-SAN 6000 indicators comply with 3-A Fittings Standards and will provide excellent, clear viewing of liquids, powders and many bulk solids. *These are the industry's first bull's-eye style sight flow indicators to earn the "USDA Dairy Accepted" designation.*

Viewing is direct, using either of two windows which allow full see-through observation. (See Bulletin for TRU-SAN 7000 sanitary models featuring "optical cylinder" viewing.)

### WIDE VARIETY OF MODELS TO MEET YOUR SPECIFIC SYSTEM REQUIREMENTS

#### Standard & Special Sizes

Standard sizes (Tubing ODs), are 1", 1½", 2", 2½", 3", and 4". Other tubing sizes are available as special orders.

**Choice of Connections** Adaptability to virtually any system is assured by a choice of four connection styles: clamp, butt weld, bevel seat, flange.

**Quality Construction Materials** TRU-SAN 6000 indicators are manufactured with all stainless steel metal components. Stainless steel bodies are finished to 150 grit (32 Ra) or better for smooth, easy-to-clean surfaces.

**Gaskets To Match Applications** TRU-SAN 6000 models feature black Buna gaskets as standard. Other gasket

materials are available and should be carefully specified to match system temperatures and media. Note the Gasket Specification Guide provided.

**Choice Of Viewing Windows** Viewing windows of UNI-SAN 6500 are standard on all TRU-SAN 6000 indicators. Features include outstanding safety and service life plus high temperature tolerance. They are autoclavable. Acrylic windows may be specified where lower temperatures or glass restrictions apply.

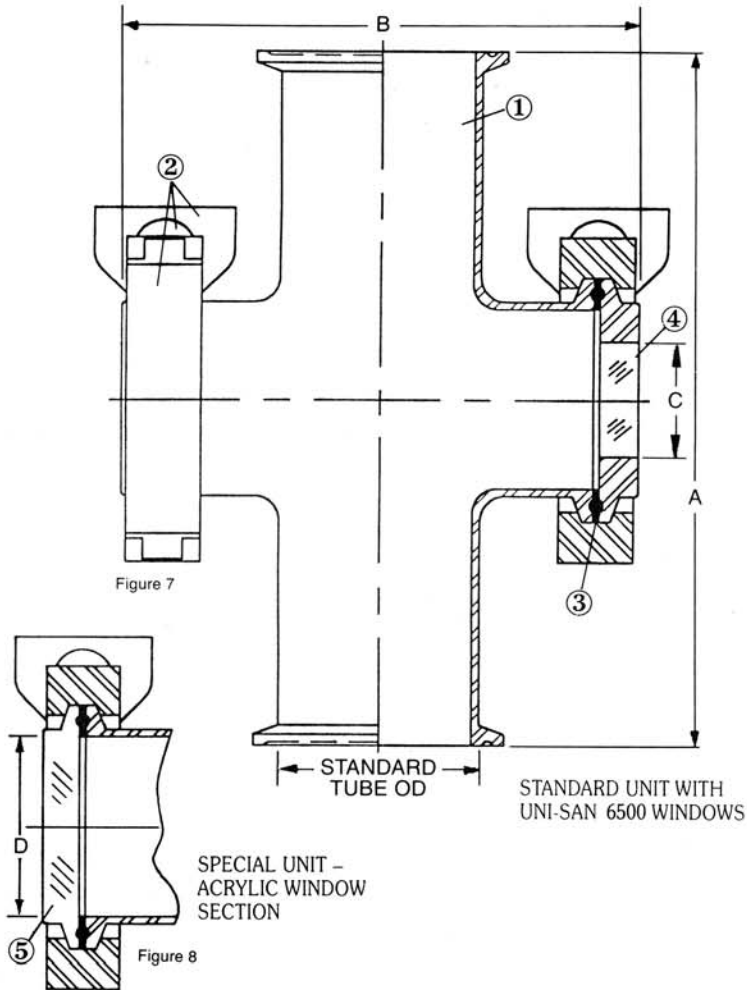
### GASKET SPECIFICATION GUIDE • TRU-SAN™ 6000 INDICATORS

At 150 PSIG (10.3 BAR)

| GASKET MATERIAL | SPECIFICATION CODE | MAXIMUM TEMPERATURE |       |
|-----------------|--------------------|---------------------|-------|
| Buna, Black     | BN                 | 250°F               | 121°C |
| Buna, White     | BNW                | 250°F               | 121°C |
| EPDM            | EP                 | 250°F               | 121°C |
| Viton           | V                  | 350°F               | 177°C |
| PTFE            | D                  | 450°F               | 232°C |
| Silicone        | J                  | 450°F               | 232°C |
| Polyethylene    | P                  | 180°F               | 82°C  |

UNITS WITH ACRYLIC WINDOWS: MAX. TEMPERATURE 180° F (82° C)

Tri-Clamp® is a registered trademark of Tri-Clover, Inc.



## TRU-SAN™ 6000: DIMENSIONS

| Standard Tube OD (In.) | A Inches (mm) | B Inches (mm) | C Inches (mm) | D Inches (mm) |
|------------------------|---------------|---------------|---------------|---------------|
| 1                      | 5.00 (127)    | 4.40 (112)    | 0.90 (23)     | 0.86 (22)     |
| 1½                     | 5.50 (140)    | 4.40 (112)    | 0.90 (23)     | 1.36 (35)     |
| 2                      | 7.00 (178)    | 4.40 (112)    | 1.20 (30)     | 1.86 (47)     |
| 2½                     | 7.00 (178)    | 5.26 (134)    | 1.50 (38)     | 2.36 (60)     |
| 3                      | 7.50 (191)    | 5.40 (137)    | 2.00 (51)     | 2.86 (73)     |
| 4                      | 9.00 (229)    | 6.56 (167)    | 3.00 (76)     | 3.81 (97)     |

## TRU-SAN™ 6000: MATERIALS

- ① – Tube Body: 316L Or 304 Stainless Steel
- ② – Tri-Clamp Assembly: 304 Stainless Steel
- ③ – Gasket: Various (See Table)
- ④ – Window Component:  
Standard – UNI-SAN 6500 (Glass Fused to Stainless Steel or Hastelloy C Ring)
- ⑤ – Window Component:  
Special – Acrylic or Polycarbonate (One Piece Construction)

### ONLY FROM JACOBY-TARBOX: UNI-SAN™ 6500\* WINDOWS PROVIDE MAXIMUM STRENGTH AND IMPACT RESISTANCE

UNI-SAN 6500 sight flow indicator windows are stronger and safer than any other type available. Unlike a tempered glass window, UNI-SAN 6500 is resistant to failure from scratches, chipping and surface pitting.

\*UniGlas® type

UNI-SAN 6500 is made by heating and cooling borosilicate glass contained inside a metal ring. The metal ring shrinks more than the glass, *thereby producing a uniform high compression within the glass* that results in unmatched resistance to temperature, pressure and impact failures associated with severe applications.

UNI-SAN 6500 windows employ no gaskets, sealing materials or adhesives.

For lower temperature, non-glass applications, one-piece acrylic windows are available in all models.



### HOW TO SPECIFY TRU-SAN™ 6000 SIGHT FLOW INDICATORS

Specifying the TRU-SAN 6000 model to meet your system requirements is facilitated by determining the following application information:

- Indicator Model Size: 1" - 1½" - 2" - 2½" - 3" - 4"
- Connection Type: Clamp - Butt Weld - Bevel Seat - Flange
- Gasket Type: (See Specification Guide Provided)
- Window Material: UNI-SAN 6500 (Standard) • Acrylic
- Authorization: 3A per standard 65-00
- USDA Acceptance

NOTE: Jacoby-Tarbox shall not be liable for damages of any kind resulting in part from failure to install its products in accordance with all applicable codes and/or state and local regulations, improper application and/or maintenance.



# JACOBY-TARBOX®

A Product Line of The Clark•Reliance® Corporation  
16633 Foltz Industrial Parkway, Strongsville, OH 44149 USA  
Telephone: (440) 572-1500 Fax: (440) 238-8828

