

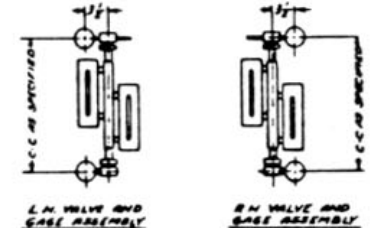
BILL OF MATERIAL			
PC NO.	NAME OF PART	QTY.	MATERIAL PART NO.
1	TOP VALVE BODY	1	STEEL L-847-AB
2	BOT VALVE BODY L.H.	1	" L-849-AB
3	BOT VALVE BODY R.H.	1	" L-848-AB
4	TOP GAGE CONN.	1	" V-9127-AB
5	BOT GAGE CONN.	1	" V-10211-AB
6	WELDING PLUG	1	" P-7612-A1
7	EXPANSION COIL	1	" V-2820-AB
8	BRACKET	1	" V-2822-A1
10	WELDING CAP	1	" P-3966-A1
11	3/4-600 ASA FLANGE	2	" V-2820-AB
12	1/2-600 ASA FLANGE	1	" V-2822-A1
13	YOKER	2	" L-220-AS
14	VALVE STEM	2	416 SS V-15009-U
15	VALVE SEAT	2	416 SS P-363-U
16	GASKET FOR PC 15	2	STEEL P-33-1-A1
17	SPIRAL WOUND GASKET	2	316 SS BASE P-3643
18	PACKING RING SET	2	GRAPHITE G-163
19	PACKING BLAND	2	STEEL P-5661-B
20	BUSHING	2	BRASS P-5846-FA
21	BUSHING NUT	2	STEEL P-5846-AG
22	CAP SCREW	8	" P-6475-B71
23	CAP SCREW	4	" P-5729-B71
24	RETAINING WASHER	2	304 SS P-4917-R
25	CHAIN GUIDE	2	ALUMINUM V-5238-EB
26	SPROCKET RIM	2	" V-5237-EB
27	SPACER WASHER	2	STEEL P-5457-A1
28	VALVE STEM NUT	2	" P-784-ALR
29	BALL CHECK	1	316 SS P-17
30	BALL HOLDER	1	303 SS P-8-Q1
31	GASKET FOR PC 30	1	STEEL P-33-4-A1
32	NAME PLATE	1	BRASS P-6211
33	CHAMBER	2	STEEL V-12266-A1
34	CENTER TUBE	1	" V-4271-
35	FLANGED NIPPLE	2	" V-17135-A1
36	LOOSE FLANGE	2	" V-8322-AG
37	GASKET	4	GRAPHITE V-13488-7
38	MICA SHIELD	4	MICA P-2022-7
39	GLASS	4	PYREX NO. 7 NP
40	CUSHION	4	JM-78 V-14276-7
41	COVER	4	STEEL V-18276-AL
42	BOLT	16	" V-2403-B71
43	STUD	8	" P-3800-B71
44	SPRING WASHER	26	17-7 V-12677
45	NUT	22	STEEL P-3266-200
46	NAME PLATE	1	BRASS P-7565-7
47	SPIRAL WOUND GASKET	2	304 SS BASE P-3643
48	STUD	8	STEEL P-4009-B71
49	NUT	16	" P-2812-200
50	HANDCHAIN	2	NOTE 3 P-3824
51	DRAIN VALVE	1	STEEL P-16372
52	SPIRAL WOUND GASKET	1	316 SS BASE P-3643

NOTES:

ORDERING INFORMATION:

- TO ORDER A 1100 WSP GAGE WITH 18" VISIBILITY SPECIFY 1511B AND CENTERS. TO ORDER A 1100 WSP GAGE WITH 15" VISIBILITY SPECIFY 1811B AND CENTERS. WHEN ORDERING VALVES SPECIFY TYPE, GROUP AND HANDING. EXAMPLE: (1) TOP L.H. VALVE SPECIFY 7011 B-4-O L.H. (2) BOT R.H. VALVE SPECIFY 7111 B-4-O R.H.
- WHEN ORDERING COMPLETE SET AS SHOWN, SPECIFY DRAWING NO., VISIBILITY, CENTERS AND HANDING.
- FLANGES ARE 3/4-600 ASA FACING ON TRANK CONN. 1/2-600 ASA FACING ON DRAIN CONN.
- GAGE HYDROSTATICALLY TESTED AT 2800 PSI. VALVES HYDROSTATICALLY TESTED AT 275 PSI.
- HANDCHAIN (FOR SPROCKET RIM) IS LOCK LINK TYPE MADE OF HOT DIP GALVANIZED STEEL BY BRIDGEPORT CHAIN & MFG CO. TWO PIECES 10'0" LONG SUPPLIED WITH VALVES.
- WEIGHTS OF GAGE & VALVES:
 GAGE ----- 125#
 TOP SHUTOFF VALVE ----- 18#
 BOT SHUTOFF VALVE ----- 23#
 DRAIN VALVE ----- 15#

EQUIPMENT SHOWN MEETS REQUIREMENTS OF U.S. COAST GUARD, ASME CODE AND AS3 REGULATIONS.



DETAIL OF WASHER STACKS

1511 B & 1811 B BOILER WATER GAGE ASSEMBLIES FOR 1100 WSP.

JERGUSON GAGE & VALVE STRONGSVILLE, OHIO, U.S.A.

REV. 5