

Clark-Reliance

ENDURATRAP

STAINLESS STEEL FLOAT TRAP/DRAINER

- LONGER SERVICE LIFE IN VIRTUALLY ALL HEATING OR PROCESS STEAM SYSTEMS
- ALL STAINLESS STEEL BODY AND INTERNALS — RUGGED, HEAVY-DUTY DESIGN
- EASILY RENEWABLE INTERNAL PARTS
- PRESSURES TO 300 PSI
- 1/2" or 3/4" VERTICAL MODELS

RENEWABLE STAINLESS STEEL INTERNALS AND EASY SERVICING PROVIDE OUTSTANDING TRAP LIFE AND VALUE

The performance value of each Enduratrapp is additionally increased by quickly renewed internal parts. Manufactured to precise original specifications by Clark-Reliance, renewable Enduratrapp parts include float, lever, seat, disc, disc lock, and bracket.

Enduratrapp is an advanced version of the highly efficient float trap. Featuring corrosion-resistant stainless steel construction — both trap body and internal parts — Enduratrapps can provide longer service than any other trap of its type.



Figure 1
SVGS -2,3

Unique to Enduratrapps are the easily replaced or "renewable" stainless steel internals. Readily available from Clark-Reliance, renewable internals allow Enduratrapps to remain in service years after conventional types have failed or been discarded. The extremely tough stainless steel body sets a new standard for durability.

Available in 1/2" and 3/4" vertical models, corrosion-resistant Enduratrapps represent your best solution to maximum steam conservation per trap dollar. Manufactured from the highest quality materials, this advanced trap type can be specified for a broad range of applications in manufacturing, chemical and food processing, power generating and other major industries.

APPLICATIONS

Clark-Reliance float operated traps give maximum capacity drainage of accumulated liquids from steam, air or gas lines. They are specially designed to drain variable condensate loads. This is important for

superheated steam systems, where light-load or no-load conditions exist, without affecting their performance.

ENDURATRAPP DESIGN FEATURES OFFER INCREASED OPERATING EFFICIENCY. PERFORMANCE PLUS.

In addition to offering an all-stainless steel trap with renewable internals, Enduratrapps feature special design characteristics that improve operation and servicing.

ENDURATRAPP SVGS-2 AND SVGS-3

Duo-Step Leverage is an exclusive Clark-Reliance feature employing two trap lever fulcrums. This design produces added force to "crack" trap valves and also allows the extended travel required to open orifices fully (preventing wire drawing). Duo-Step Leverage allows larger discharge orifices without increasing trap size.

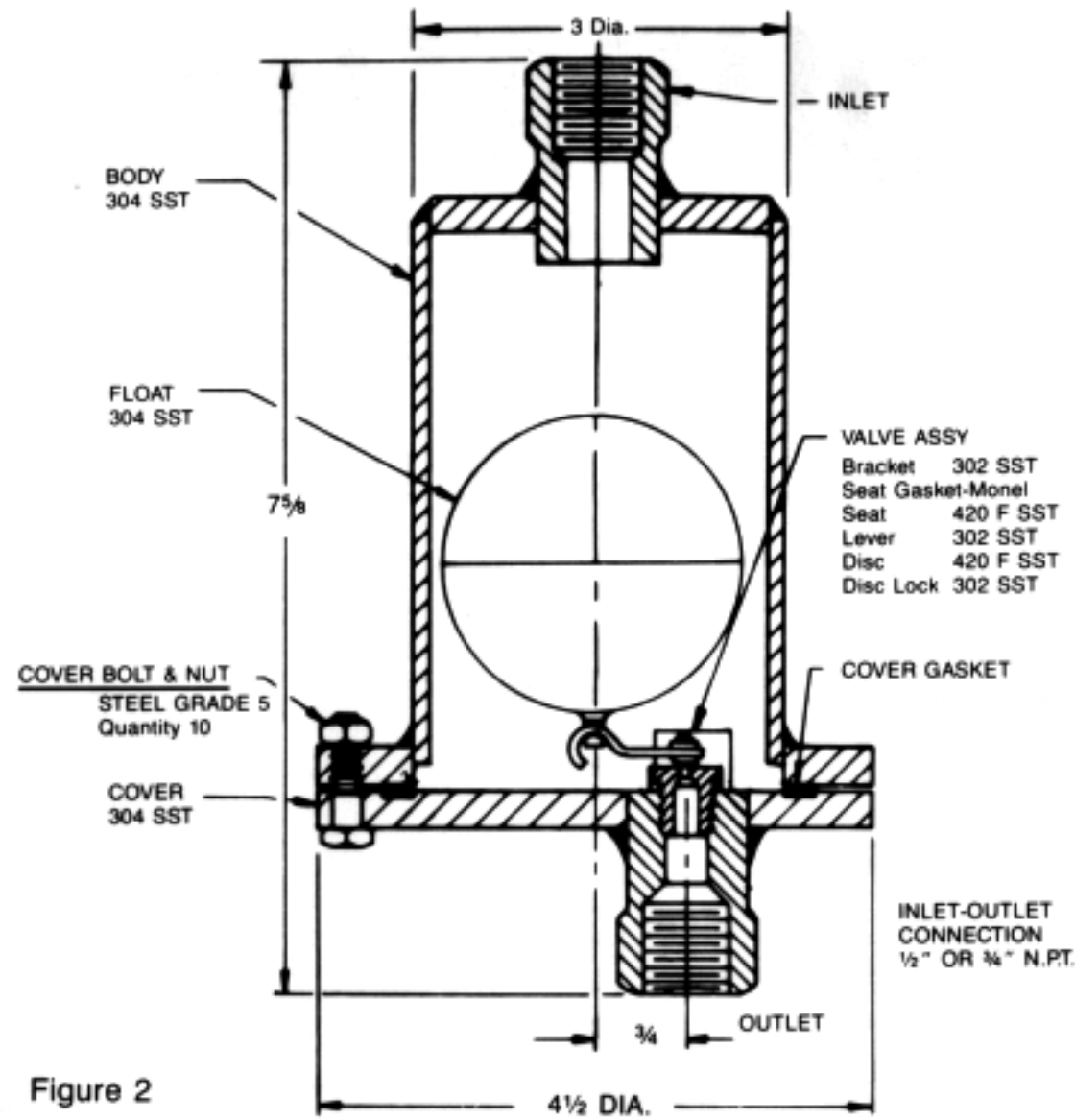


Figure 2

NOTE: INLET & OUTLET CONNECTIONS INDICATED (STAMPED) ON TRAP

DIMENSIONS AND CAPACITIES

ENDURATRAPP MODEL	PIPE CONNECTION	NET WEIGHT
SVGS-2	1/2"	5 LBS.
SVGS-3	3/4"	5 LBS.

ALL ENDURATRAPP MODELS					
OPERATING PRESSURE (DIFFERENTIAL PRESSURE)	CONTINUOUS DISCHARGE CAPACITIES IN G.P.M.	ORIFICE DIAMETER	OPERATING PRESSURE (DIFFERENTIAL PRESSURE)	CONTINUOUS DISCHARGE CAPACITIES IN G.P.M.	ORIFICE DIAMETER
15	2.9	7/32"	125	1.9	7/64"
30	4.0	7/32"	150	1.4	3/32"
50	2.7	5/32"	200	1.1	5/64"
75	3.1	5/32"	250	1.2	5/64"
80	3.1	5/32"	300	1.3	5/64"
100	1.7	7/64"			

For additional information,
contact your local Clark-Reliance
representative

Clark-Reliance®

16633 FOLTZ INDUSTRIAL PARKWAY • STRONGSVILLE, OHIO 44136-5597 • USA
TELEPHONE: (440) 572-1500 • FACSIMILE: (440) 238-8828 • www.clark-reliance.com



NOTE: Clark-Reliance shall not be liable for damages of any kind resulting in part from failure to install its products in accordance with all applicable codes and/or state and local regulations, improper application and/or maintenance.