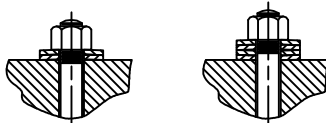
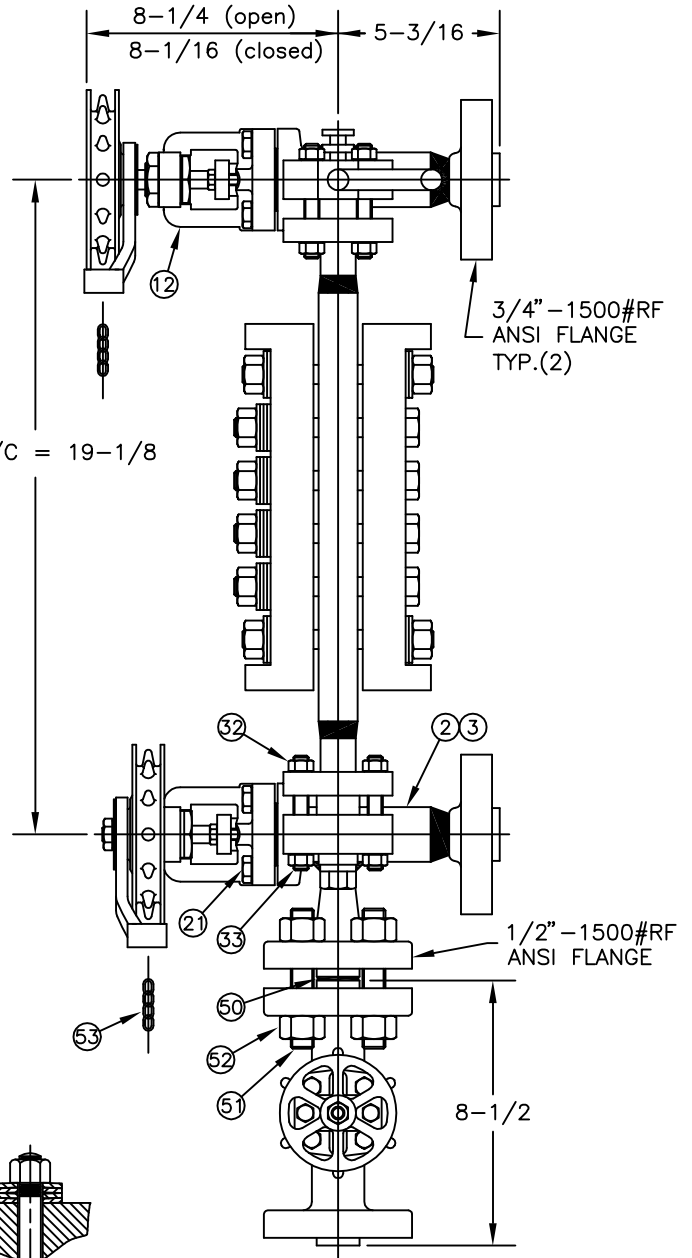
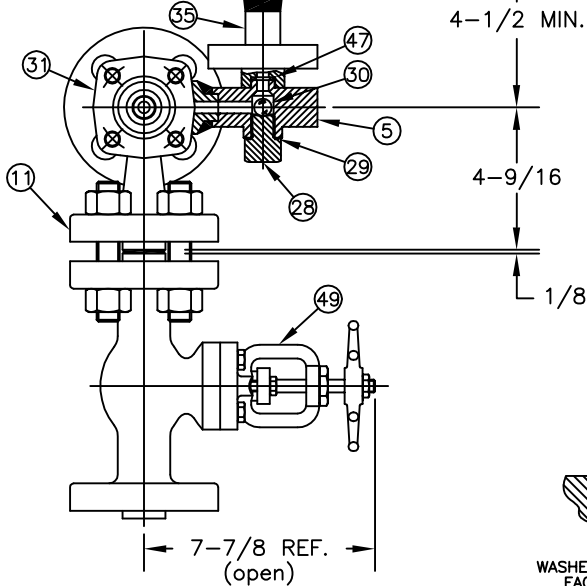
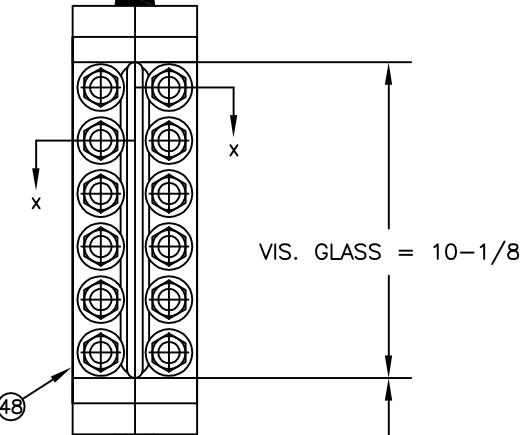
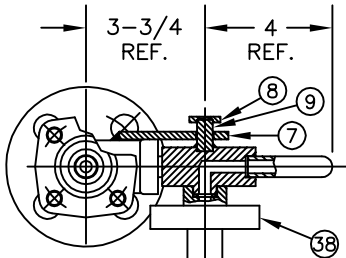
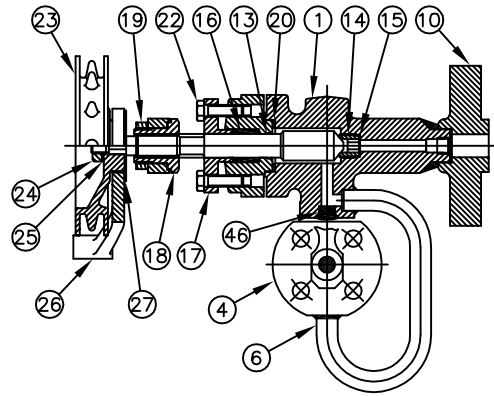


SECTION X-X



WASHER STACK UNDER EACH STUD NUT WASHER STACK UNDER EACH BOLT NUT

DETAIL OF WASHER STACKS

#1016B BOILER
WATER GAGE ASSEMBLIES
FOR 1600# W.S.P.

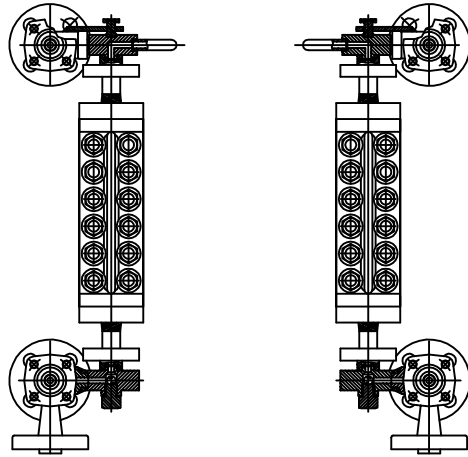
JERGUSON
GAGE & VALVE CO.
STRONGSVILLE, OHIO, U.S.A.

DRAWN
MJK
CHECKED
DMD
APPROVED

FILE NO.
DRAWING NO.
SG-1016B
(pg.1 of 2)
REV. 7

7 REDRAWN ON CAD	3/02	DMD	
SYM REVISION	DATE	APP	

SCALE NONE DATE 3/27/02



L.H. VALVE AND
GAGE ASSEMBLY

R.H. VALVE AND
GAGE ASSEMBLY

EQUIPMENT SHOWN MEETS ASME CODE AND
ABS REGULATIONS

BILL OF MATERIAL

PIECE NO.	NAME OF PART	QTY.	MATERIAL	PART NO.
1	TOP VALVE BODY	1	STEEL	L-1124-A5
2	BOT. VALVE BODY RH	1	STEEL	L-848-A5
3	BOT. VALVE BODY LH	1	STEEL	L-849-A5
4	TOP GAGE CONN.	1	STEEL	V-11313-B
5	BOTTOM GAGE CONN.	1	STEEL	V-11314-B
6	EXPANSION LOOP	1	STEEL	V-11310-A46
7	SUPPORT BRACKET	1	STEEL	V-11311-A6
8	WELDING CAP	1	STEEL	P-3968-A6
9	PIN	1	STEEL	V-11315-A6
10	3/4"-1500#RFSW FLG	2	STEEL	FA5-15-1-3D1P
11	1/2"-1500#RF FLG	1	STEEL	V-8946U-A6
12	YOKE	2	STEEL	L-220-B
13	VALVE STEM	2	416 SS	V-15889-U
14	VALVE SEAT	2	416 SS TREATED	P-343-U3
15	VALVE SEAT GASKET	2	STEEL	P-33-1-A1
16	PACKING	24	GRAPHITE	G-264
17	PACKING GLAND	2	STEEL	V-18257-4-AL4
18	BUSHING	2	BRASS	P-5946-F4
19	BUSHING NUT	2	STEEL	P-5665-A6
20	SPIRAL GASKET	2	316/CHLOROCARB	P-5643-T
21	CAP SCREW	8	STEEL	P-6475-B71
22	CAP SCREW	4	STEEL	P-5729-B71
23	SPROCKET RIM	2	ALUMINUM	V-5237-E8
24	VALVE STEM NUT	2	STEEL	P-78-4-2HA
25	SPACER WASHER	2	STEEL	P-5457-A
26	CHAIN GUIDE	2	ALUMINUM	V-5238-E8
27	RETAINING WASHER	2	304 SS	P-4917-R
28	BALL HOLDER	1	STEEL	V-10627-A6
29	BALL HOLDER GASKET	1	304/FLEXICARB	V-9864
30	BALL CHECK	1	316 SS	P-1-T2
31	NAME PLATE	2	BRASS	P-6211-F
32	NUT	16	STEEL	P-235-2-2HA
33	STUD	8	STEEL	P-4008-3-B71
34	CHAMBER	1	STEEL	V-12370U-A6
35	FLANGED NIPPLE	2	STEEL	V-12369- -A6
36	LOOSE FLANGE	2	STEEL	V-8382-A6
37	GASKET	2	GRAFOIL	V-13488-7
38	SHIELD	2	MICA	P-8092-7
39	GLASS (TRANS)	2	TEMPERED BORO	V-16758-7
40	CUSHION	2	IFC5500	V-19087-7
41	COVER	2	STEEL	V-12367-AL4
42	STUD	4	STEEL	P-3998-4-B71
43	BOLT	8	STEEL	V-12403-B71
44	SPRING WASHER	48	SPRING STEEL	V-15697-J1
45	NUT	16	STEEL	P-8366-2HA
46	WELDING PLUG	1	STEEL	P-7612-A6
47	SPIRAL GASKET	2	304/CHLOROCARB	P-5198
48	NAME PLATE	1	BRASS	P-7566-F
49	DRAIN VALVE	1	STEEL	A-16775
50	SPIRAL GASKET	1	316/FLEXICARB	P-3958-TL
51	STUD	4	STEEL	P-4756-4-B71
52	NUT	8	STEEL	P-3596-2HA
53	HANDCHAIN	2	SEE NOTE 5	P-3924

NOTES:

- TO ORDER A 1600# GAGE W/ 10" VISIBILITY, SPECIFY #1016B AND CENTER-TO-CENTER. WHEN ORDERING VALVES, SPECIFY TYPE, GROUP AND HANDING.
EX.) TO ORDER A 1600# WSP TOP L.H. VALVE , SPECIFY 7025B-4-01LH
TO ORDER A 1600# WSP BOT. R.H. VALVE , SPECIFY 7125B-4-01RH
- WHEN ORDERING A COMPLETE ASSEMBLY AS SHOWN, SPECIFY DRAWING NO., VISIBILITY, CENTER-TO-CENTER AND HANDING.
- VALVES HAVE 3/4"-1500# ANSI FLANGED TANK CONN. AND 1/2"-1500# ANSI FLANGED DRAIN CONN.
- GAGE HYDROSTATICALLY TESTED @ 2400 PSI. VALVES HYDROSTATICALLY TESTED @ 3750 PSI.
- HANDCHAIN (FOR SPROCKET RIM) IS LOCK LINK TYPE MADE OF HOT DIP GALVANIZED STEEL. TWO PIECES, EACH 10 FEET LONG, SUPPLIED WITH VALVES.
- WEIGHTS: TOP SHUTOFF VALVE ~ 18#, BOTTOM SHUTOFF VALVE ~ 23#
DRAIN VALVE ~ 15#, GAGE ~ 62#

			#1016B BOILER WATER GAGE ASSEMBLIES FOR 1600# W.S.P.		JERGUSON GAGE & VALVE CO. STRONGSVILLE, OHIO, U.S.A.		DRAWN MJK	FILE NO.
							CHECKED DMD	DRAWING NO. SG-1016B (pg.2 of 2)
7 REDRAWN ON CAD	3/02	DMD			SCALE NONE	DATE 3/28/02	APPROVED	REV. 7
SYM	REVISION	DATE	APP					