

Medium Pressure Filter

Pi 3000

Operating pressure 200/315 bar, Nominal size up to 400
according DIN 24550

1. Features

Efficient filters for modern hydraulic systems

- Modular design principle
- Compact design
- Minimal pressure drop
- optical/electrical/electronic contamination control
- Threaded connection

Quality filters, easy to service

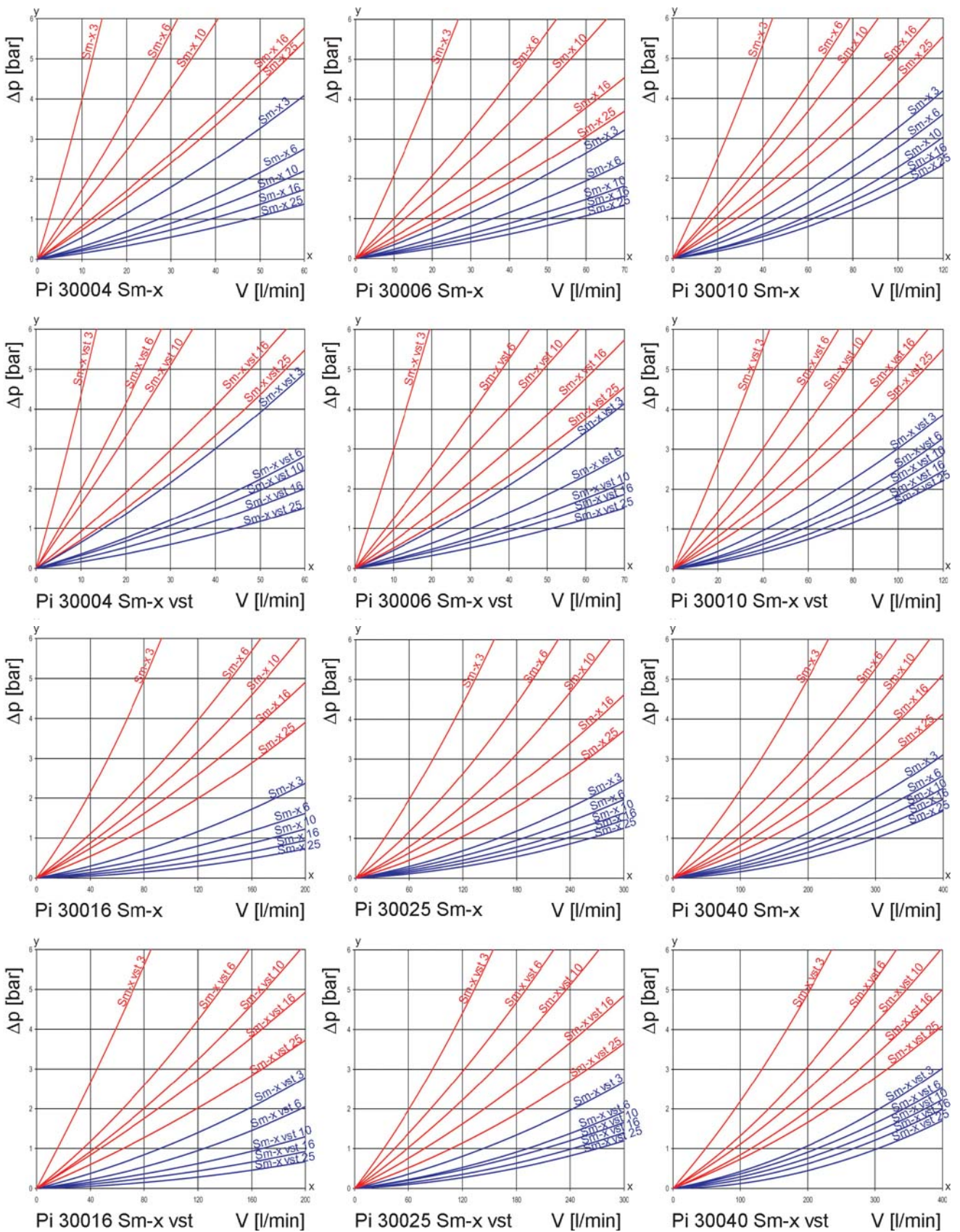
- Equipped with highly efficient Sm-x filter elements
- β -valued elements per ISO 16889
- High dirt holding capacity and differential pressure stability providing optimal element service life

Worldwide distribution



2. Flow rate/pressure drop curve complete filter

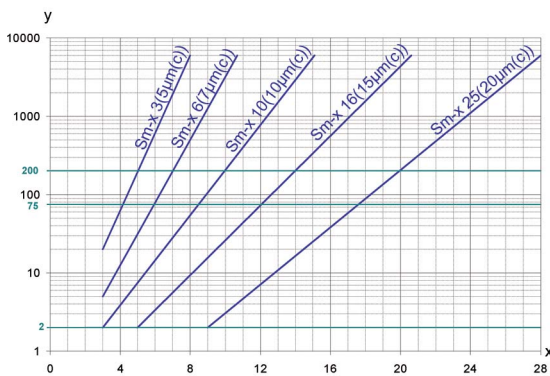
■ 190 mm²/s (25° E)
■ 33 mm²/s (4,5° E)



y = differential pressure Δp [bar]

x = flow rate V [l/min]

3. Separation characteristics



y = beta-ratio

x = particle size [μm]

determined by multipass test (ISO 16889)

calibration according to ISO 11171 (NIST)

4. Filter data performance

measured according to ISO 16889 (multipass test)

Sm-x elements with
 Δp 20 bar

Sm-x	3	$\beta_{5(C)} \geq 200$
Sm-x	6	$\beta_{7(C)} \geq 200$
Sm-x	10	$\beta_{10(C)} \geq 200$
Sm-x	16	$\beta_{15(C)} \geq 200$
Sm-x	25	$\beta_{20(C)} \geq 200$

up to 10 bar differential
pressure

Sm-x vst elements with
 Δp 210 bar

Sm-x vst	3	$\beta_{5(C)} \geq 200$
Sm-x vst	6	$\beta_{7(C)} \geq 200$
Sm-x vst	10	$\beta_{10(C)} \geq 200$
Sm-x vst	16	$\beta_{15(C)} \geq 200$
Sm-x vst	25	$\beta_{20(C)} \geq 200$

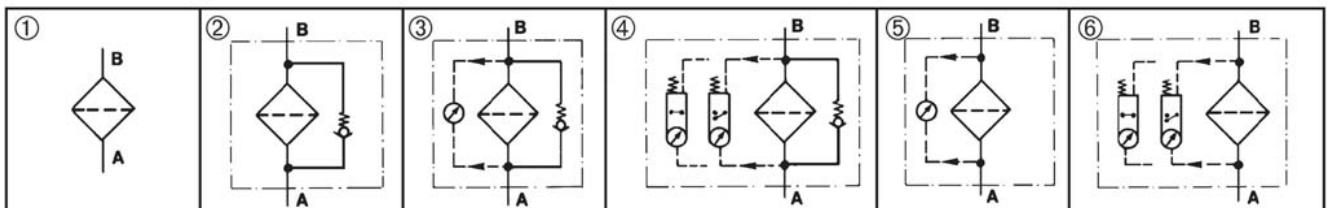
up to 20 bar differential
pressure

5. Quality assurance

MAHLE filter and filter elements are manufactured respectively, tested in accordance with the following international standards:

Norm	Designation
DIN ISO 2941	Hydraulic fluid power filter elements; verification of collapse/burst resistance
DIN ISO 2942	Hydraulic fluid power filter elements; verification of fabrication integrity
DIN ISO 2943	Hydraulic fluid power filter elements; verification of material compatibility with fluids
DIN ISO 2923	Hydraulic fluid power filter elements; method for end load test
DIN ISO 2924	Hydraulic fluid power filter elements; verification of flow fatigue characteristics
ISO 3968	Hydraulic fluid power filters; evaluation of pressure drop versus flow characteristics
ISO 10771.1	Fatigue pressure testing of metal containing envelopes in hydraulic fluid applications
ISO 16889	Hydraulic fluid power filters; multipass method for evaluation filtration performance of a filter element

6. Symbols



7. Order numbers

Example for ordering filters:

1. Housing design	2. Filter element
V = 100l/min and electrical contamination indicator Type: Pi 30010-015 Order number: 78208084	Sm-x vst 3 Type: Pi 71010 DN Sm-x vst 3 Order number: 78227480

7.1 Housing design								
Nominal size NG [l/min]	Order number	Type	① with indicator cavity	② with bypass valve and indicator cavity	③ with bypass valve and optical indicator	④ with bypass valve and electrical indicator	⑤ with optical indicator	⑥ with electrical indicator
40	78207896	Pi 30004-010						
	78207904	Pi 30004-011						
	78337388	Pi 30004-012						
	78304206	Pi 30004-013						
	78207938	Pi 30004-014						
	78207946	Pi 30004-015						
63	78207961	Pi 30006-010						
	78207979	Pi 30006-011						
	78207987	Pi 30006-012						
	78304214	Pi 30006-013						
	78208001	Pi 30006-014						
	78208019	Pi 30006-015						
100	78208035	Pi 30010-010						
	78208043	Pi 30010-011						
	78208050	Pi 30010-012						
	78304222	Pi 30010-013						
	78208076	Pi 30010-014						
	78208084	Pi 30010-015						
160	78208100	Pi 30016-010						
	78208118	Pi 30016-011						
	78208126	Pi 30016-012						
	78259978	Pi 30016-013						
	78208142	Pi 30016-014						
	78208159	Pi 30016-015						
250	78208167	Pi 30025-010						
	78208175	Pi 30025-011						
	78208183	Pi 30025-012						
	78259988	Pi 30025-013						
	78208209	Pi 30025-014						
	78208217	Pi 30025-015						
400	78208225	Pi 30040-010						
	78208233	Pi 30040-011						
	78208241	Pi 30040-012						
	78259996	Pi 30040-013						
	78208266	Pi 30040-014						
	78208274	Pi 30040-015						

When filter with non bypass configuration is selected the collapse pressure of the element may not be exceeded.

Type Pi 30004 - Pi 30010 have an operating pressure of 315 bar/test pressure of 410 bar.

7.2 Filter elements*					
Nominal size NG [l/min]	Order number	Type	Filter material	Collapse pressure [bar]	Filter surface [cm ²]
40	78260929	Pi 21004 DN Sm-x 3	Sm-x 3	20	475
	77690859	Pi 22004 DN Sm-x 6	Sm-x 6		475
	77925571	Pi 23004 DN Sm-x 10	Sm-x 10		475
	78260937	Pi 24004 DN Sm-x 16	Sm-x 16		475
	78260945	Pi 25004 DN Sm-x 25	Sm-x 25		475
	78216079	Pi 71004 DN Sm-x vst 3	Sm-x vst 3	210	445
	77960156	Pi 72004 DN Sm-x vst 6	Sm-x vst 6		445
	77925654	Pi 73004 DN Sm-x vst 10	Sm-x vst 10		445
	78216087	Pi 74004 DN Sm-x vst 16	Sm-x vst 16		445
	78216095	Pi 75004 DN Sm-x vst 25	Sm-x vst 25		445
63	78260960	Pi 21006 DN Sm-x 3	Sm-x 3	20	835
	77960867	Pi 22006 DN Sm-x 6	Sm-x 6		835
	77925589	Pi 23006 DN Sm-x 10	Sm-x 10		835
	78260978	Pi 24006 DN Sm-x 16	Sm-x 16		835
	78260986	Pi 25006 DN Sm-x 25	Sm-x 25		835
	78216137	Pi 71006 DN Sm-x vst 3	Sm-x vst 3	210	780
	77960149	Pi 72006 DN Sm-x vst 6	Sm-x vst 6		780
	77925662	Pi 73006 DN Sm-x vst 10	Sm-x vst 10		780
	78216145	Pi 74006 DN Sm-x vst 16	Sm-x vst 16		780
	78216152	Pi 75006 DN Sm-x vst 25	Sm-x vst 25		780
100	78227472	Pi 21010 DN Sm-x 3	Sm-x 3	20	1375
	77960875	Pi 22010 DN Sm-x 6	Sm-x 6		1375
	77925597	Pi 23010 DN Sm-x 10	Sm-x 10		1375
	78261000	Pi 24010 DN Sm-x 16	Sm-x 16		1375
	78261018	Pi 25010 DN Sm-x 25	Sm-x 25		1375
	78227480	Pi 71010 DN Sm-x vst 3	Sm-x vst 3	210	1275
	77960131	Pi 72010 DN Sm-x vst 6	Sm-x vst 6		1275
	77925670	Pi 73010 DN Sm-x vst 10	Sm-x vst 10		1275
	78261281	Pi 74010 DN Sm-x vst 16	Sm-x vst 16		1275
	78216160	Pi 75010 DN Sm-x vst 25	Sm-x vst 25		1275

* further elements available upon request.

7.2 Filter elements*					
Nominal size NG [l/min]	Order number	Type	Filter material	Collapse pressure [bar]	Filter surface [cm ²]
160	78261034	Pi 21016 DN Sm-x 3	Sm-x 3	20	2530
	77960826	Pi 22016 DN Sm-x 6	Sm-x 6		2530
	77925605	Pi 23016 DN Sm-x 10	Sm-x 10		2530
	78261042	Pi 24016 DN Sm-x 16	Sm-x 16		2530
	78261059	Pi 25016 DN Sm-x 25	Sm-x 25		2530
	77940638	Pi 71016 DN Sm-x vst 3	Sm-x vst 3	210	1885
	77960123	Pi 72016 DN Sm-x vst 6	Sm-x vst 6		1885
	77925688	Pi 73016 DN Sm-x vst 10	Sm-x vst 10		1885
	78269797	Pi 74016 DN Sm-x vst 16	Sm-x vst 16		1885
	78216178	Pi 75016 DN Sm-x vst 25	Sm-x vst 25		1885
250	78227514	Pi 21025 Sm-x 3	Sm-x 3	20	4020
	77960834	Pi 22025 Sm-x 6	Sm-x 6		4020
	77925613	Pi 23025 Sm-x 10	Sm-x 10		4020
	78261075	Pi 24025 Sm-x 16	Sm-x 16		4020
	78261083	Pi 25025 Sm-x 25	Sm-x 25		4020
	77940646	Pi 71025 Sm-x vst 3	Sm-x vst 3	210	3090
	77960115	Pi 72025 Sm-x vst 6	Sm-x vst 6		3090
	77925696	Pi 73025 Sm-x vst 10	Sm-x vst 10		3090
	78269813	Pi 74025 Sm-x vst 16	Sm-x vst 16		3090
	78216186	Pi 75025 Sm-x vst 25	Sm-x vst 25		3090
400	78227522	Pi 21040 DN Sm-x 3	Sm-x 3	20	6770
	77960842	Pi 22040 DN Sm-x 6	Sm-x 6		6770
	77925621	Pi 23040 DN Sm-x 10	Sm-x 10		6770
	78261109	Pi 24040 DN Sm-x 16	Sm-x 16		6770
	78261117	Pi 25040 DN Sm-x 25	Sm-x 25		6770
	77940653	Pi 71040 DN Sm-x vst 3	Sm-x vst 3	210	5240
	77960107	Pi 72040 DN Sm-x vst 6	Sm-x vst 6		5240
	77930829	Pi 73040 DN Sm-x vst 10	Sm-x vst 10		5240
	78269821	Pi 74040 DN Sm-x vst 16	Sm-x vst 16		5240
	78260903	Pi 75040 DN Sm-x vst 25	Sm-x vst 25		5240

* further elements available upon request.

8. Specifications

Design:	line mounting filter
Operating pressure:	200/315 bar*
Test pressure:	260/410 bar
Temperature range:	-10 °C to +120 °C (other temperature ranges on request)
Bypass opening pressure:	Δp 7 bar \pm 10 %
Filter head material:	GGG
Filter bowl material:	St
Sealing material:	NBR/PTFE

Activating pressure of optical/ electrical differential pressure indicator:	Δp 5 bar \pm 10 %
Electrical data of contamination indicator:	250 V AC/200 V DC
Maximum voltage:	1 A
Maximum current on contact.:	70 W
Inrush current:	IP 65 when inserted and secured
Type of protection:	bistable

Contact:
Cable connection: M 20 x 1.5

The switching function can be changed by turning the electric upper part by 180° (normally closed contact or normally open contact). The state on delivery is a normally closed contact.

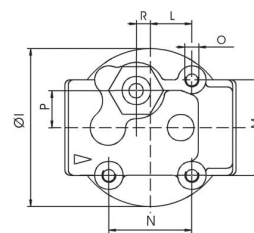
The use of quenching circuits must be checked in the case of inductivity in the DC current circuit. The contamination indicator data sheet contains further information and additional contamination indicator versions.

We draw attention to the fact that all values indicated are average values which do not always occur in specific cases of application. Our products are continually being further developed. Values, dimensions and weights can change as a result of this. Our specialized department will be pleased to offer you advice.

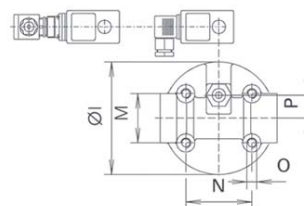
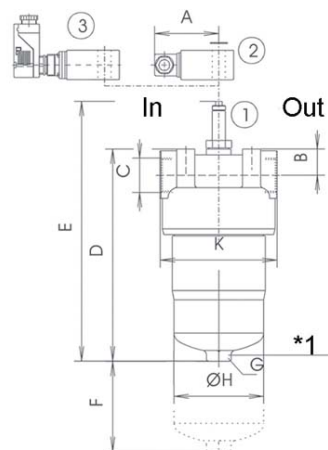
When using our filters in areas which are to be classified according to EU Directive 94/9 EC (ATEX 95), we recommend prior discussion with us. The standard version can be used for liquids based on mineral oil (corresponding to the fluids in Group 2 of Directive 97/23 EC Article 9). Please consult with us if using other media.

Subject to technical alteration without prior notice.

* Type Pi 30004 - Pi 30010 have an operating pressure of 315 bar/ test pressure of 410 bar.



NG 40 - 100



NG 160 - 400

- In = inlet
Out = outlet
- *1 NG 250, 400 with drain screw G ¼ DIN 910
- Pos. 1 Optical contamination indicator
- Pos. 2 Electrical upper section connector according DIN EN 175301-803
Execution: PiS 3092, 3105, 3115
- Pos. 3 Electrical upper section connector according DIN EN 175301-804
Execution: PiS 3102, 3122, 3132

9. Dimensions

All dimensions except "C" in mm.

Type	A	B	C	D	E	F	G SW	H	I	K	L	M	N	O	P	R	Weight [kg]
Pi 30004	78	31	G ½	194	252	80	27	66	90	92	23.5	54	47	M 8 x 16	21	8	4.2
Pi 30006	78	31	G ¾	254	312	80	27	66	90	92	23.5	54	47	M 8 x 16	21	8	4.9
Pi 30010	78	31	G 1	344	402	80	27	66	90	92	23.5	54	47	M 8 x 16	21	8	5.8
Pi 30016	78	32	G 1¼	268	326	110	30	109	137	142	-	60	80	M 12 x 16	28	-	10.0
Pi 30025	78	32	G 1¼	368	426	110	30	109	137	142	-	60	80	M 12 x 16	28	-	12.0
Pi 30040	78	32	G 1¼	518	576	110	30	109	137	142	-	60	80	M 12 x 16	28	-	15.6

10. Installation, operating and maintenance instructions

10.1 Filter installation

When installing the filter make sure that sufficient space is available to remove filter element and filter bowl. Preferable the filter should be installed with the filter bowl pointing downwards. The contamination indicator must be visible.

10.2 Connecting the electrical contamination indicator

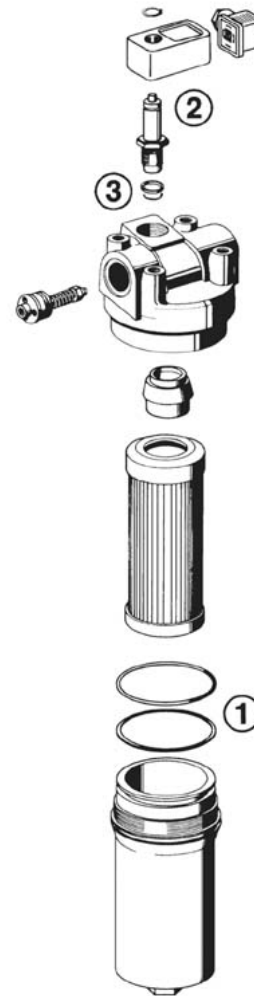
The electrical indicator is connected via a 2-pole appliance plug according to DIN EN 175301-803 with poles marked 1 and 2. The electrical section can be inverted to change from normally open position to normally closed position or vice versa.

10.3 When must the filter element be replaced?

- Filters equipped with optical and electrical contamination indicator:
During cold starts, the indicator may give a warning signal. Depress the red button of the visual indicator once again only after operating temperature has been reached. If the red button immediately pops out again and/or the electrical signal has not switched off after reaching operating temperature, the filter element must be replaced after the end of the shift.
- Filters without contamination indicator:
The filter element should be replaced after the trial run or flushing of the system. Afterwards follow instructions of the manufacturer.
- Please always ensure that you have Original MAHLE replacement elements in stock: disposable elements (Sm-x) cannot be cleaned.

10.4 Element replacement

- Stop system and relieve filter from pressure.
- Unscrew the filter bowl by turning counter-clockwise. Clean the bowl using a suitable cleaning solvent.
- Remove the filter element with a side-to-side motion.
- Check o-ring and spigot for damage. Replace, if necessary.
- Make sure that the order number on the spare element corresponds with the order number of the plate. Remove the plastic bag and push element over the spigot in the filter head.
- Complete installation by screwing on the bowl, turning clockwise until it comes to a full stop. Back off the bowl 1/8 to 1/2 turn.



11. Spare parts list

Order numbers for spare parts		
Position	Type	Order number
①	Seal kit	
	Pi 30004 - Pi 30010	
	NBR	78383747
	FPM	78383754
	EPDM	78383762
	Pi 30016 - Pi 30040	
	NBR	78383770
	FPM	78383788
	EPDM	78383796
②	Contamination indicator	
	Optical PiS 3093/5	77669914
	Electrical PiS 3092/5	77669864
	Electrical upper section only	77536550
③	Seal kit for contamination indicator	
	NBR	77760275
	FPM	77760283
	EPDM	77760291

MAHLE Filtersysteme GmbH
Industriefiltration
Schleifbachweg 45
D-74613 Öhringen
Phone +49 (0) 7941/67-0
Fax +49 (0) 7941/67-23429
industriefiltration@mahle.com
www.mahle-industriefiltration.com
78396012.11/2006