

DIMENSION CHART -- STANDARD SIZES											
SIMPLIPORT PART NO.	NO. OF WINDOW UNITS	VISION A		MIN. WATER GAGE CENTERS FOR SG777 VALVES C		BODY D		E		G (MINIMUM)	
		INCHES	MM	INCHES	MM	INCHES	MM	INCHES	MM	INCHES	MM
P4105L	5	10 1/4	(260.3mm)	18 7/8	(479.4mm)	11 7/8	(301.6mm)	12 3/4	(323.9mm)	6 15/16	(176.2mm)
P4106L	6	12 5/8	(320.7mm)	21 1/4	(539.8mm)	14 1/4	(362.0mm)	15 1/4	(384.2mm)	8 1/8	(206.4mm)
P4107L	7	15	(381mm)	23 5/8	(600.1mm)	16 5/8	(422.3mm)	17 1/2	(444.5mm)	9 5/16	(236.4mm)
P4108L	8	17 3/8	(441.3mm)	26	(660.4mm)	19	(482.6mm)	19 7/8	(504.8mm)	10 1/2	(266.7mm)
P4109L	9	19 3/4	(501.7mm)	28 3/8	(720.7mm)	21 3/8	(545.1mm)	22 1/4	(545.1mm)	11 11/16	(296.9mm)
P4110L	10	22 1/8	(562mm)	30 3/4	(781.0mm)	23 3/4	(625.5mm)	24 5/8	(625.5mm)	12 7/8	(327.0mm)

TO BE SPECIFIED BY CUSTOMER			BILL OF MATERIAL					
SIMPLIPORT PART NO.	C	G	ITEM	PART NO.	QTY	DESCRIPTION	MATERIAL	DWG. NO.
			1	P400*	1	BODY-WELDED ASSEMBLY	STN. STL.	
			2	PW-84	2	MODULE CUP	STN. STL.	PS7289-A
			3	PV-80	2	SEALING GASKET	MONEL	PS7290-A
			4	PV-18	2	MICA SHIELD	MICA	PS7008-A
			5	PV-18	2	GAGE GLASS	GLASS	A-10419
			6	PW-63	2	CUSHION GASKET	COPPER	PS7154-A
			7	PW-64	2	LUG WASHER	STN. STL.	PS7155-A
			8	PW-40	2	SPRING RETAINER	STN. STL.	PS7003-A
			9	PW-66	4	SPRING WASHER	STN. STL.	
			10	PW-65	2	PACKING NUT	STEEL	PS7156-A
			11	X172125	4	HEX HEAD CAP SCREW AND WASHER 5/16-18 XS/B	STN. STL.	
			12	PW-28	1	CONNECTOR	STN. STL.	B-14312
			13	PW-29	1	EXPANSION LOOP	STN. STL.	B-14312
			14	PW-33	1	TOP ADAPTOR	STN. STL.	B-14312
			15	PW-33	1	BOTTOM ADAPTOR	STN. STL.	B-14312

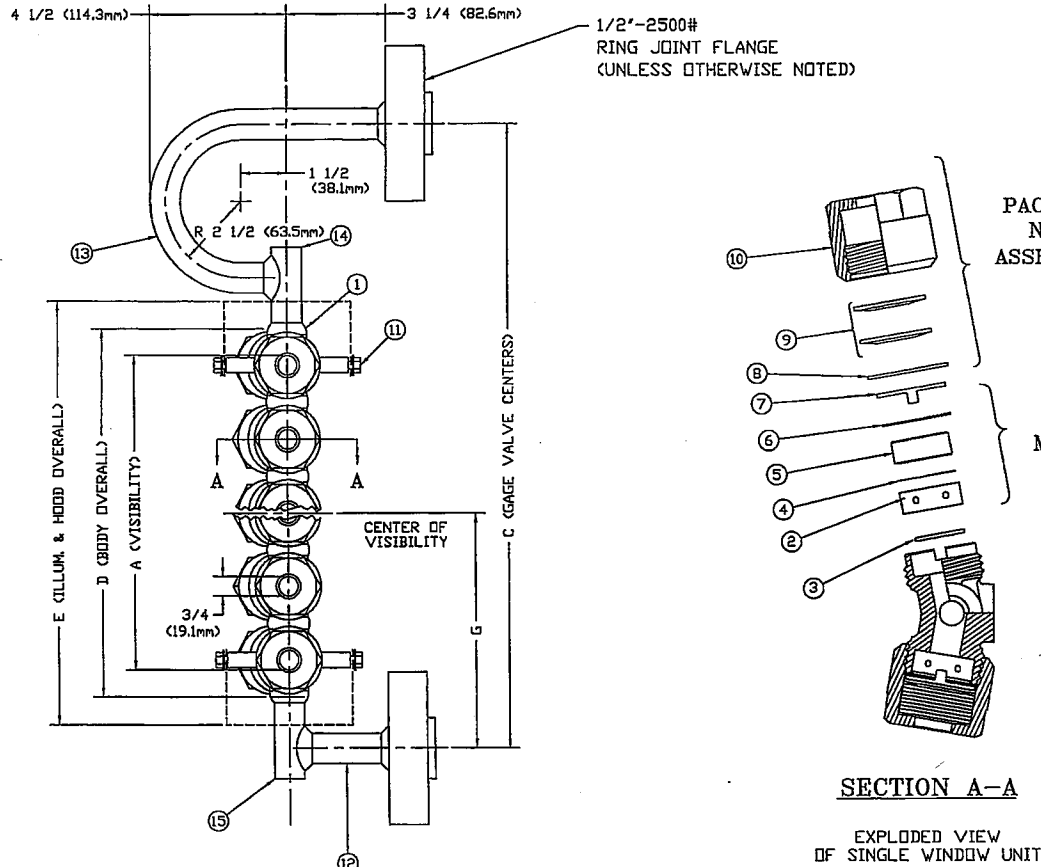


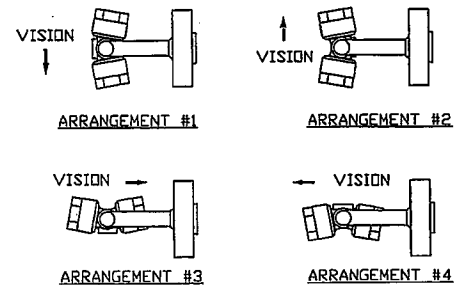
FIGURE A

FOR FLANGE CONNECTION (3000 PSI MAX)

NOTES:

- * TO COMPLETE PART NO. ADD NO. OF WINDOW UNITS
- ITEMS 2 THRU 10 FORM ONE COMPLETE ASSEMBLY OF SINGLE WINDOW UNIT
- ITEMS 2 THRU 7 COMPRISE A REPLACEMENT PACKAGE INCLUDING THE MODULE, TO BE ORDERED AS PART NO. PW-87B (SEE EXPLODED VIEW)
- ITEMS 8 THRU 10 COMPRISE A PACKING NUT ASSEMBLY, TO BE ORDERED AS PART NO. PW-68 (SEE EXPLODED VIEW)
- ASSEMBLY OF ILLUMINATOR & HOOD ON GAGE REF. DWG. AB-14916

ITEM	PART NO.	DWG. NO.
SIMPLIPORT ILLUMINATORS:		
STANDARD	PI*	B-9131
WEATHERPROOF	PIW*	B-9133
EXPLOSION-PROOF	PIW*EP	B-10034
SIMPLIPORT HOODS:		
OPEN-END WEATHERPROOF	PHOW*	1-15-62
DIRECT-VISION WEATHERPROOF	PHDWM*	B-10547
PERISCOPE-WEATHERPROOF	PHPW*	B-9133
PERISCOPE-WEATHERPROOF WITH SOCKET DUCT	PHPWS*	B-9134
PERISCOPE-WEATHERPROOF WITH FLANGED DUCT	PHPWF*	B-9134



PLEASE SELECT ARRANGEMENT REQUIRED

NOTE: FOR ARRANGEMENTS #3 & #4, CONSULT FACTORY FOR MIN. CENTERS

PATENT NO. 3,187,573
 DESIGN PRESSURE 3000 PSI
 DESIGN TEMPERATURE 695°F.
 HYDROTEST AT 4500 PSI

REV	DESCRIPTION	DATE	SIG

UNLESS OTHERWISE NOTED
 TOLERANCES (±)
 DECIMAL & STOCK (0.002)
 FIN. FRACTIONAL (UP TO 1", NOT INCL.) (0.010)
 FIN. FRACTIONAL (1" INCL., UP TO 3") 1/64
 FIN. FRACTIONAL (3" INCL., UP TO 6") 1/32
 FIN. FRACTIONAL (6" INCL., UP TO 12") 1/16
 FIN. FRACTIONAL (12" & OVER) 1/8
 ANGLES 1°
 MACHINE FINISH-125√ OR SHOOTER REMOVE BURRS AND SHARP EDGES

CLARK-RELIANCE CORP.
 STRONGSVILLE, OHIO, U.S.A.

MATERIAL		SEE INDIVIDUAL PART DRAWINGS	
DRAWN	ST	SCALE	NONE
CHKD.	MS	DATE	11/26/07
DRAWING NO.	PS1491-A		REV.

SIMPLIPORT P41** SERIES GAGE ASSEMBLY
 W/ EXPANSION LOOP & FLANGED CONNECTIONS