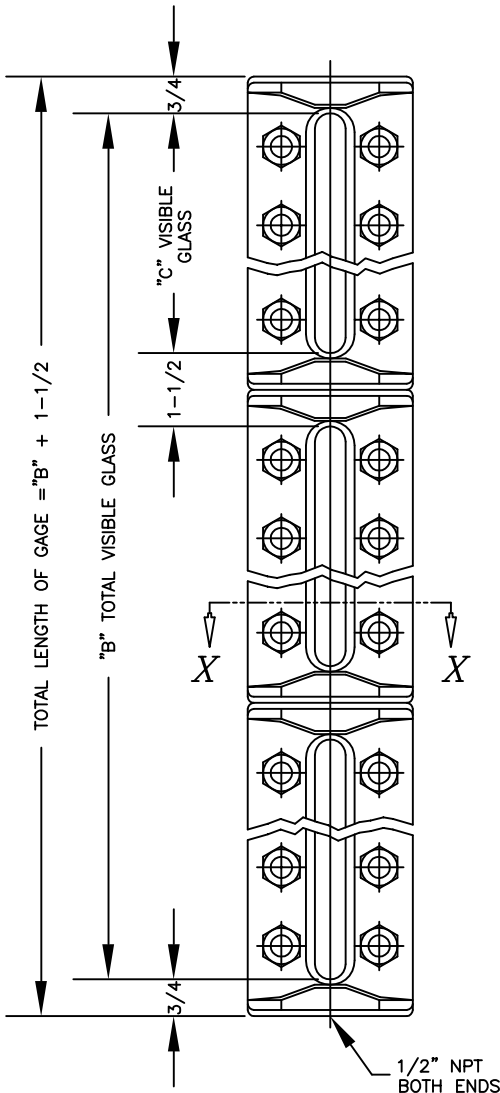
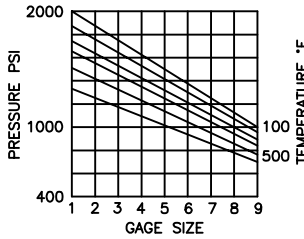


BILL OF MATERIAL

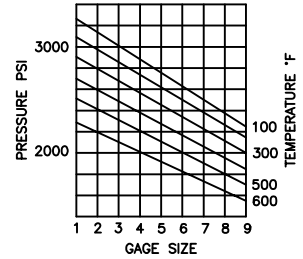
PIECE NO.	NAME OF PART	QTY.	TYPE 1 TO -20°F		TYPE 2 -21°F TO -50°F		TYPE 3 -51°F TO -325°F	
			MATERIAL	PART NO.	MATERIAL	PART NO.	MATERIAL	PART NO.
1	CHAMBER TRANS REFLEX	1	STEEL ASTM A696	V-787- -A44 V-786- -A44	STEEL ASTM A350	V-787- -A32 V-786- -A32	316SS ASTM A511	V-787- -T18 V-786- -T18
2	GASKET	1	IFG5500	V-18980-	TEFLON	V-7858-	TEFLON	V-7858-
3	GLASS TRANS REFLEX	2/ SECT. 1/ SECT.	TEMPERED GLASS	V-16756-	TEMPERED GLASS	V-16756-	TEMPERED GLASS	V-16756-
4	EXTENSION ASS'Y	1	CLEAR PLASTIC	S-18678-	CLEAR PLASTIC	S-18678-	CLEAR PLASTIC	S-18678-
5	CUSHION	1	IFG5500	V-18980-	IFG5500	V-18980-	IFG5500	V-18980-
6	COVER	1	STEEL ASTM A105	V-2- -A5	STEEL ASTM A537	V-438- -A62	316SS MIL QQ-S-763	V-438- -TL2
7	BOLT	1	ASTM A193 GR.B7	P-263-B71	ASTM A193 GR.B7M	P-263-B7M	ASTM A193 GR.B8M	P-263-B8M
8	U-BOLT	1	ASTM A193 GR.B7	P-256-B71	ASTM A193 GR.B7M	P-256-B7M	ASTM A193 GR.B8M	P-256-B8M
9	NUT	1	ASTM A194 GR.2H	V-11062-2HA	ASTM A194 GR.2HM	V-11062-2M	ASTM A194 GR.8M	P-78-12-B8M
10	RATING TAG	1	SS	V-16340-	SS	V-16340-	SS	V-16340-
	RATING TAG	1	SS	V-16341-	SS	V-16341-	SS	V-16341-



-51°F TO -325°F USE 70% OF RATING SHOWN

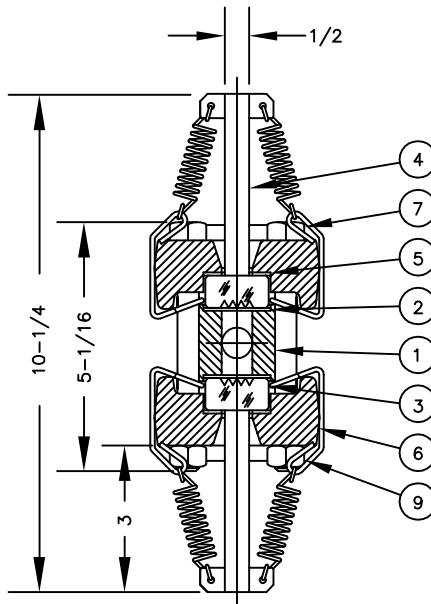


T-20

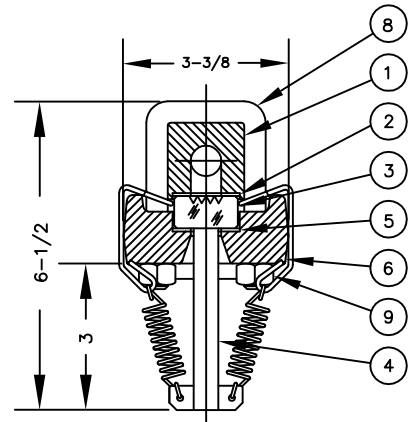


R-20

NOTE:
1. EXTENSION SHOWN IS STANDARD
LONGER EXTENSIONS ARE AVAILABLE



SECTION X-X
SERIES TF-20



SECTION X-X
SERIES RF-20

SIZE NO.	QTY. PER SECT.			DIM. "C" IN INCHES	NUMBER OF SECTIONS											
	BOLT	U-BOLT	NUT		DIMENSION "B" IN INCHES											
					1	2	3	4	5	6	7	8	9			
1	6	3	6	3 3/4	3 3/4	9	14 1/4	19 1/2	24 3/4	30	35 1/4	40 1/2	45 3/4			
2	6	3	6	4 3/4	4 3/4	11	17 1/4	23 1/2	29 3/4	36	42 1/4	48 1/2	54 3/4			
3	8	4	8	5 3/4	5 3/4	13	20 1/4	27 1/2	34 3/4	42	49 1/4	56 1/2	63 3/4			
4	10	5	10	6 3/4	6 3/4	15	23 1/4	31 1/2	39 3/4	48	56 1/4	64 1/2	72 3/4			
5	10	5	10	7 7/8	7 7/8	17 1/4	26 5/8	36	45 3/8	54 3/4	64 1/8	73 1/2	82 7/8			
6	12	6	12	9 1/8	9 1/8	19 3/4	30 3/8	41	51 5/8	62 1/4	72 7/8	83 1/2	94 1/8			
7	14	7	14	10 1/4	10 1/4	22	33 3/4	45 1/2	57 1/4	69	80 3/4	92 1/2	104 1/4			
8	16	8	16	11 7/8	11 7/8	25 1/4	38 5/8	52	65 3/8	78 3/4	92 1/8	105 1/2	118 7/8			
9	16	8	16	12 5/8	12 5/8	26 3/4	40 7/8	55	69 1/8	83 1/4	97 3/8	111 1/2	125 5/8			

6	TEF. GASKETS -21°F & BELOW	5/29/98		SERIES NF-20 NON-FROSTING GAGES 1/2" NPT END CONN.	JERGUSON GAGE & VALVE CO. STRONGSVILLE, OHIO, U.S.A.	DRAWN TAP	FILE NO.
5	REDRAWN & UPDATED	7/11/96				CHECKED MJK	DRAWING NO.
4	NEW MAT'LS & TEMP RATINGS	3/15/96				APPROVED	NF20-40
3	NEW MAT'LS & TEMP RATINGS	4/18/94				SCALE NONE	DATE 5/29/98
SYM	REVISION	DATE	APP				