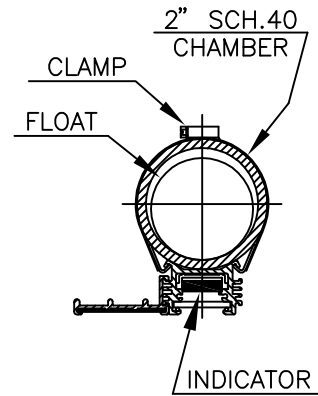
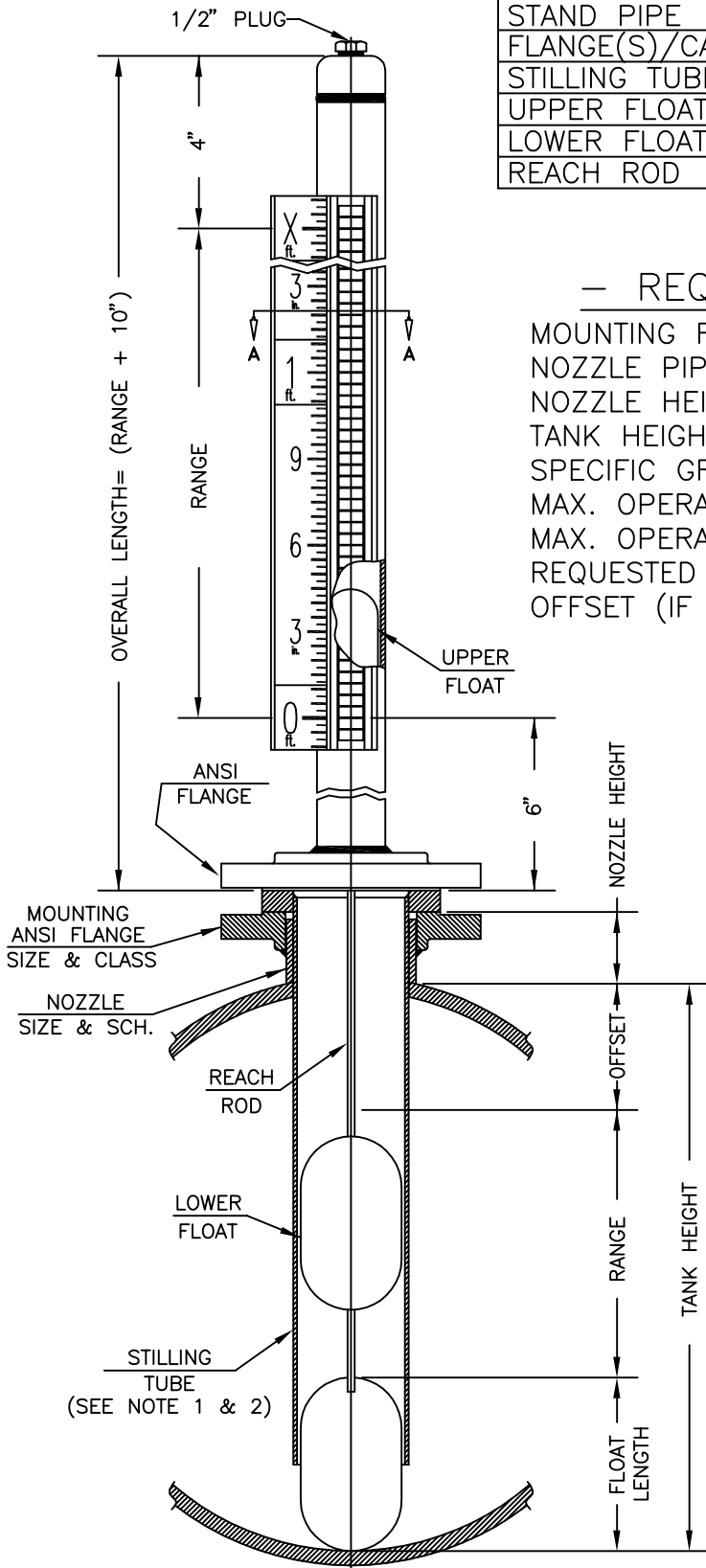


STANDARD BILL OF MATERIAL: MIIH-BEF

NAME OF PART	MATERIAL	REMARKS
STAND PIPE	(PER ORDER)	
FLANGE(S)/CAP/PLUG	(PER ORDER)	
STILLING TUBE	(PER ORDER)	
UPPER FLOAT	(PER ORDER)	
LOWER FLOAT	(PER ORDER)	
REACH ROD	(PER ORDER)	

- REQUIRED DESIGN INFORMATION -

MOUNTING FLANGE SIZE & CLASS: _____
 NOZZLE PIPE SIZE & SCHEDULE: _____
 NOZZLE HEIGHT: _____
 TANK HEIGHT: _____
 SPECIFIC GRAVITY (SG): _____
 MAX. OPERATING PRESSURE: _____
 MAX. OPERATING TEMPERATURE: _____
 REQUESTED RANGE: _____
 OFFSET (IF ANY, OMIT FOR MAX. RANGE): _____



SECTION A-A

- NOTES:**
1. STILLING TUBE RECOMMENDED FOR RANGES GREATER THAN 24".
 2. GUIDE PIPE SHALL BE SUBSTITUTED FOR STILLING TUBE WHERE CLEARANCE ISSUES EXIST BETWEEN FLOAT(S) AND NOZZLE ID.
 3. ALL BEF STYLE MAG GAGES ARE SUBJECT TO A DESIGN REVIEW BEFORE QUOTING.

MODEL No.: MII-BEF

MODEL MIIH-BEF
MAGNICATOR II

JERGUSON
GAGE & VALVE CO.
STRONGSVILLE, OHIO, U.S.A.

FILE NO:
DRAWING NO.
MIIH-BEF

REF:	DRAWN BY: MJK	REV: 2	SCALE: NONE
CHECKED BY:	APPROVED BY:	DATE: 3/25/02	