

MODEL NUMBER EXAMPLE

EPL-60-7 1 2

NUMBER OF GAGE SECTIONS (1,2,3)

PREWIRED TERMINAL BLOCK CONNECTIONS

0=NOT WIRED

1=PREWIRED LEADS FOR 115VAC 50/60HZ

2=PREWIRED LEADS FOR 230VAC 50/60HZ

GAGE WINDOW GLASS SIZE (1 THRU 9)

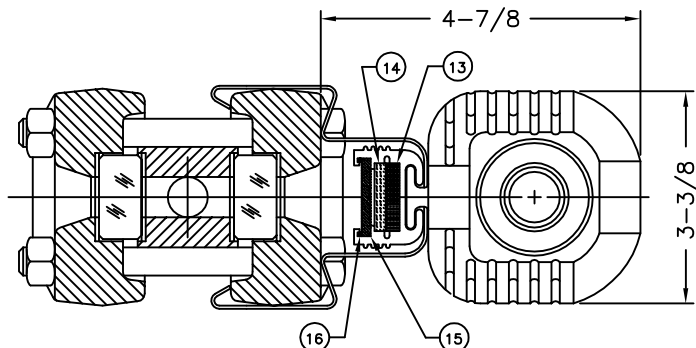
FIBER OPTIC ILLUMINATOR

115 OR 230VAC, 50/60HZ

UL-CLASS 1, DIV. 1, GROUPS A,B,C,D

C-UL

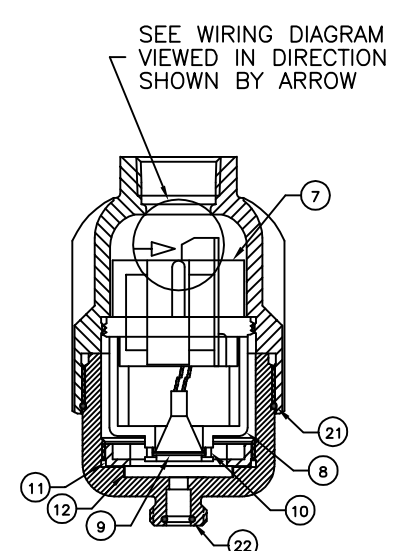
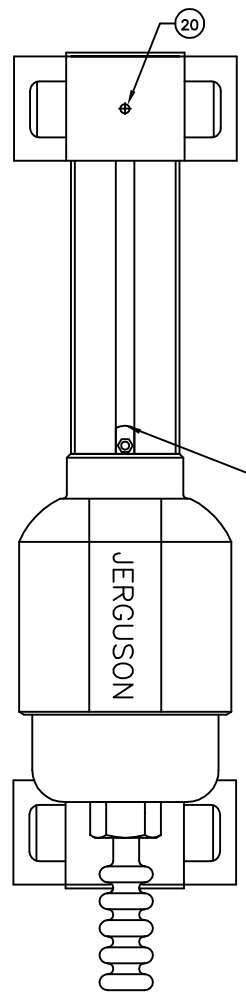
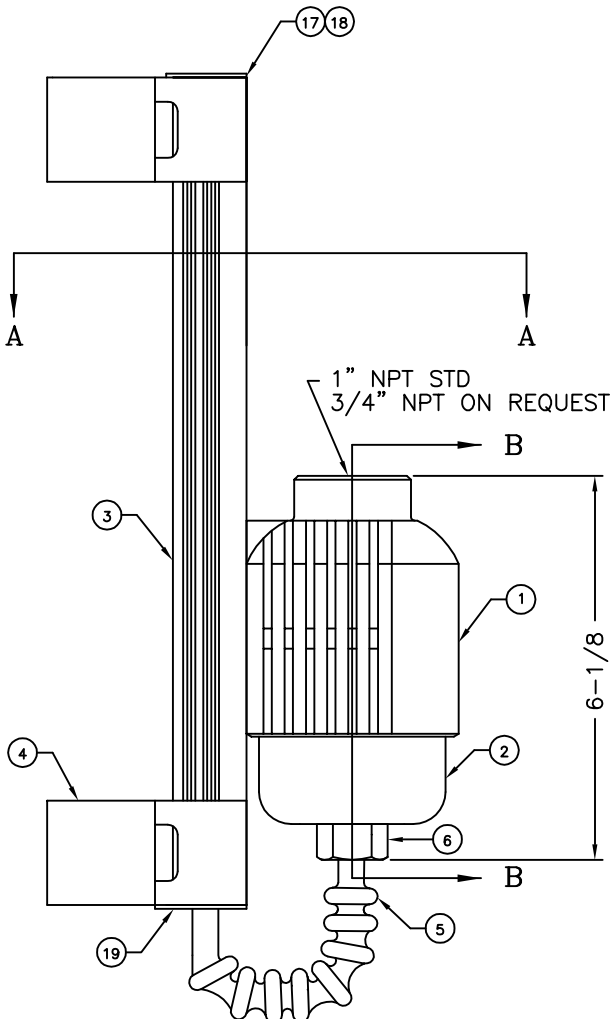
NEMA 4,4X,7



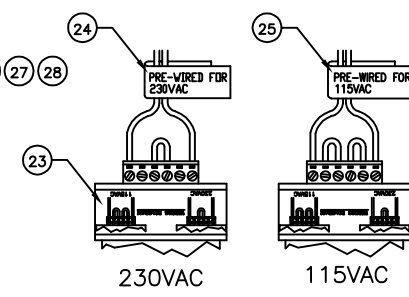
**SECTION A-A**

ILLUMINATOR SHOWN MOUNTED TO GAGE ASSEMBLY

BILL OF MATERIAL				
PIECE NO.	NAME OF PART	QTY.	PART NO.	REMARKS
1	TOP HOUSING	1	V-18992	
2	BOTTOM HOUSING	1	V-18981	
3	EXTRUSION	1	V-18972	
4	BRACKET	2	V-18985	
5	CABLE TUBE	1	V-18984	
6	CABLE TUBE NUT	1	V-18990	
7	POTTED TRANSFORMER	1	V-18996	SPARE PART
8	LAMP HOLDER	1	V-18993	
9	LIGHT	1	V-19000	SPARE PART
10	LAMP HOLDER CLIP	1	V-18986	
11	FILTER GLASS RETAINER	1	V-18988	
12	FILTER GLASS	1	V-18987	
13	INSULATION TAPE	1		
14	FIBER STRIP	1	V-19113	
15	GLASS PLATE	1	V-18973	
16	O-RING CORD	1	V-18974	
17	END PLATE	1	V-18997	
18	END PLATE GASKET	1	V-18999	
19	CABLE TUBE END PLATE	1	V-18998	
20	T-SLOT NUT	2	V-19036	
21	O-RING	1	OR2-150-E515-80	SPARE PART
22	O-RING	1	OR2-109-E515-80	SPARE PART
23	TRANSFORMER LABEL	1	V-19210	
24	WIRE LABEL-230VAC	1	V-19221	USE #24 OR #25
25	WIRE LABEL-115VAC	1	V-19220	USE #24 OR #25
26	T-SLOT NUT	1	V-19036	STOP ASSEMBLY
27	#6-32 SET SCREW	1	X177360	STOP ASSEMBLY
28	#6-32 HEX NUT	1	X171210	STOP ASSEMBLY



**SECTION B-B**



**WIRING DIAGRAM**

BACK OF POTTED TRANSFORMER ASSEMBLY SHOWN

DIMENSIONAL DRAWING FOR APPROVAL BY: WIKA  
 P.O. #: 74286  
 OUR #: CO 239609  
 REF. TAG:

5	REMOVED CSA APPROVAL NOTE	9/30/04	MJK
4	SHOW SHROUDS ON COVERS	3/19/02	MJK
3	ADD 26,27,28 PER CDC 97-	7/15/97	ABS
2	RELEASED REVISION PER CDC 97-065	4/8/97	LMC
SYM	REVISION	DATE	APP

ASSEMBLY,  
LUMENATOR

JERGUSON  
 GAGE & VALVE CO.  
 STRONGSVILLE, OHIO, U.S.A.

DRAWN BAC	FILE NO.
CHECKED	DRAWING NO. GD-2040
APPROVED	REV. 5

SCALE NONE DATE 9/30/04