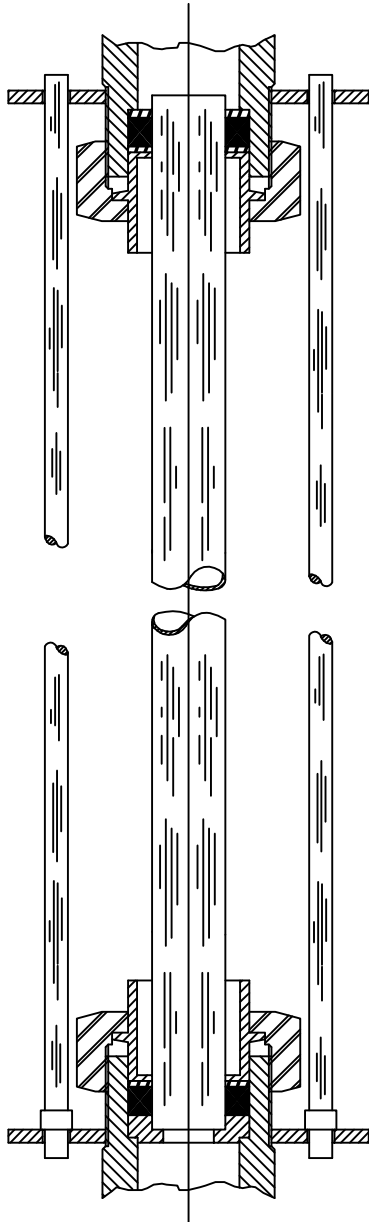
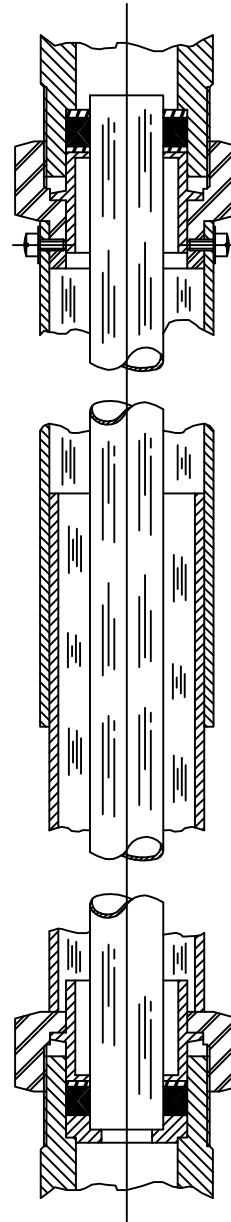


ASSEMBLY	VALVE TYPE	VISIBLE GLASS	PROTECTOR	LENGTH
A	125	☉ TO ☉ - 4	GUARD ROD	☉ TO ☉ - 1.125
A	136 & 56	☉ TO ☉ - 4.625	GUARD ROD	☉ TO ☉ - 1.125
E	136 & 56	☉ TO ☉ - 4.875	PLASTIC TUBE	☉ TO ☉ - 0



ASSEMBLY A  
GUARD ROD PROTECTOR



ASSEMBLY E  
PLASTIC TUBULAR PROTECTOR

				PROTECTORS, FOR TUBULAR GLASS VALVES #125, 136 & 56	<b>JERGUSON</b> GAGE & VALVE CO. STRONGSVILLE, OHIO, U.S.A.	DRAWN F.A.	FILE NO.
7	ADDED 125 VALVE TYPE	6/1/98				CHECKED MJK	DRAWING NO. <b>GD-1598</b>
6	REDRAWN	7/15/96				APPROVED	
SYM	REVISION	DATE	APP			SCALE NONE	DATE 7/15/96