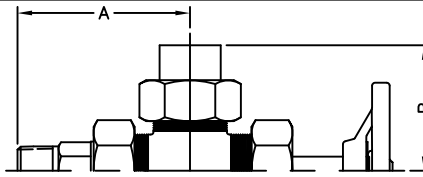


**STANDARD UNION CONNECTIONS**

NOTE: CHECK w/ FACTORY FOR  
NON-STANDARD CONNECTIONS  
NOT LISTED IN TABLES BELOW.

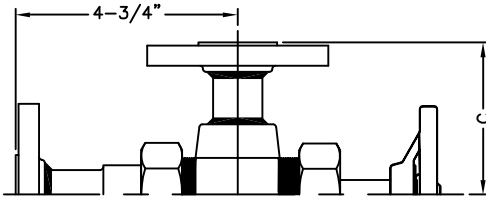


VALVE SERIES	UNION TANK CONNECTION (A DIMENSION)							
	1/2" MNPT (OR MSW)	3/4" MNPT (OR MSW)	1" MNPT (OR MSW)	1/2" FNPT (OR FSW)	3/4" FNPT	1/2" MNPT SPH. (OR MSW)	1/2" FNPT SPH. (OR FSW)	3/4" MNPT SPH. (OR MSW)
60,90 140	3-11/16"	3-11/16"	4-1/8"	2-13/16"	2-13/16"	4-5/16"	3-7/16"	4-5/16"

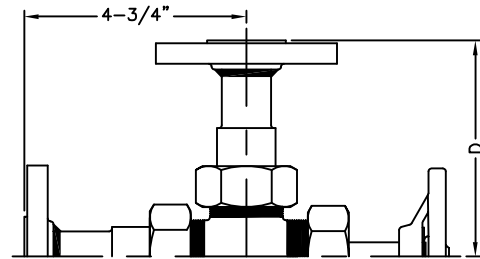
VALVE SERIES	UNION GAGE CONNECTION (B DIMENSION)							
	1/2" MNPT (OR MSW)	3/4" MNPT (OR MSW)	1" MNPT (OR MSW)	1/2" FNPT (OR FSW)	3/4" FNPT	1/2" MNPT SPH. (OR MSW)	1/2" FNPT SPH. (OR FSW)	3/4" MNPT SPH. (OR MSW)
64,67,94 144,147	3-9/16"	3-9/16"	4"	2-11/16"	2-11/16"	4-3/16"	3-5/16"	4-3/16"
74BL 77BL	4-1/16"	4-1/16"	4-1/2"	3-3/16"	3-3/16"	4-11/16"	3-13/16"	4-11/16"
74,77	4-7/16"	4-7/16"	4-7/8"	3-9/16"	3-9/16"	5-1/16"	4-3/16"	5-1/16"

**FLANGED UNION/NON-UNION CONNECTIONS**



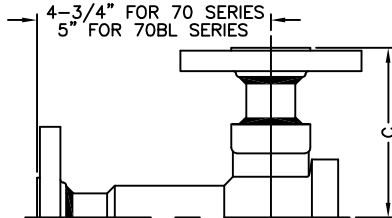
FLANGE SIZE	FLANGE RATING					VALVES
	150#	300#	600#	900#	1500#	
1/2"	3-1/4"	3-1/2"	3-3/4"	4-1/2"	4-1/2"	63,66,93 143,146
3/4"	3-1/4"	3-3/4"	4"	4-3/4"	4-3/4"	
1"						
1-1/2"	3-1/4"	4"	4-1/4"	5-1/4"	5-1/4"	
1"						

\*ALL DIMENSIONS ARE FOR SLIP-ON FLANGES\*



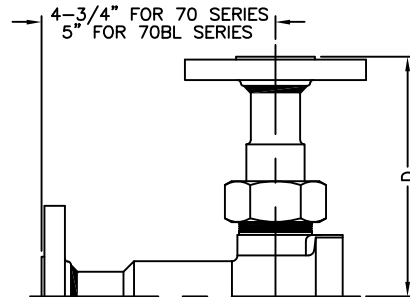
FLANGE SIZE	FLANGE RATING					VALVES	
	150#	300#	600#	900#	1500#		
1/2"	4-5/8"					4-5/8"	64,67,94 144,147
3/4"						4-5/8"	
1"						5-3/4"	
1-1/2"						5-7/8"	
2"						6-1/8"	

\*ALL DIMENSIONS ARE FOR SLIP-ON FLANGES\*



FLANGE SIZE	FLANGE RATING					VALVES
	150#	300#	600#	900#	1500#	
1/2"	4"	4-1/4"	4-1/2"	5-1/2"	5-1/2"	73 76
3/4"	4"	4-3/4"	5"	5-1/2"	5-1/2"	
1"	4-1/4"	4-3/4"	5"	6"	6"	
1-1/2"	4-1/4"	4-3/4"	5"	6"	6"	
2"	4-1/4"	4-3/4"	5"	6"	6"	
1/2"	3-5/8"	3-7/8"	4-1/8"	5-1/8"	5-1/8"	73BL 76BL
3/4"	3-5/8"	4-3/8"	4-5/8"	5-1/8"	5-1/8"	
1"	3-7/8"	4-3/4"	4-5/8"	5-5/8"	5-5/8"	
1-1/2"	3-7/8"	4-3/4"	4-5/8"	5-5/8"	5-5/8"	
2"	3-7/8"	4-3/4"	4-5/8"	5-5/8"	5-5/8"	

\*ALL DIMENSIONS ARE FOR SLIP-ON FLANGES\*



FLANGE SIZE	FLANGE RATING					VALVES	
	150#	300#	600#	900#	1500#		
1/2"	5-1/2"					5-1/2"	74 77
3/4"						5-1/2"	
1"						6-5/8"	
1-1/2"						6-3/4"	
2"						7"	
1/2"	5-1/8"					5-1/8"	74BL 77BL
3/4"						5-1/8"	
1"						6-1/4"	
1-1/2"						6-3/8"	
2"						6-5/8"	

\*ALL DIMENSIONS ARE FOR SLIP-ON FLANGES\*

MANUFACTURED BY  
**Clark-Reliance®**  
16633 FOLTZ PARKWAY  
STRONGSVILLE, OH 44149 USA  
PH: 440-572-1500  
WEB: www.clarkreliance.com

**JERGUSON®**  
OPTIONAL CONNECTIONS  
FOR VALVES

DRAWN: SH  
CHECKED:  
DATE: 10/27/09  
REVISION: 8 PER CDC 09-105  
DRAWING NO.: GD-1579  
REV.: 8