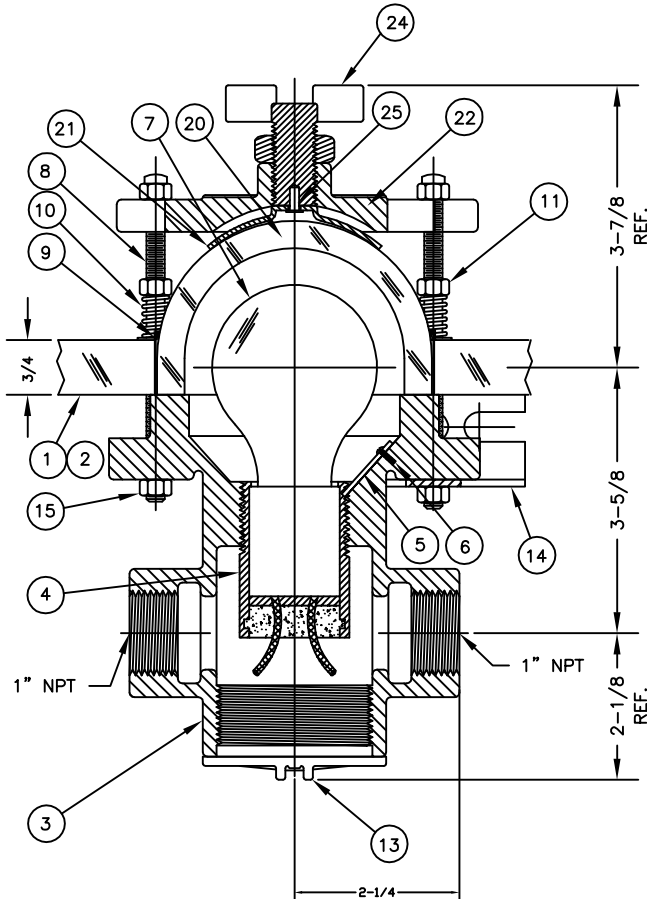
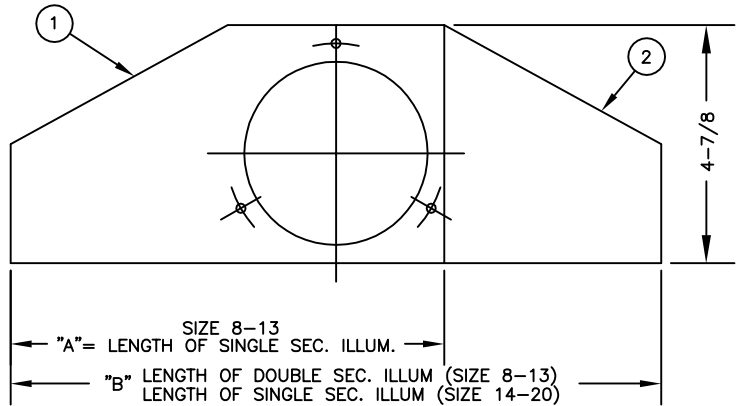
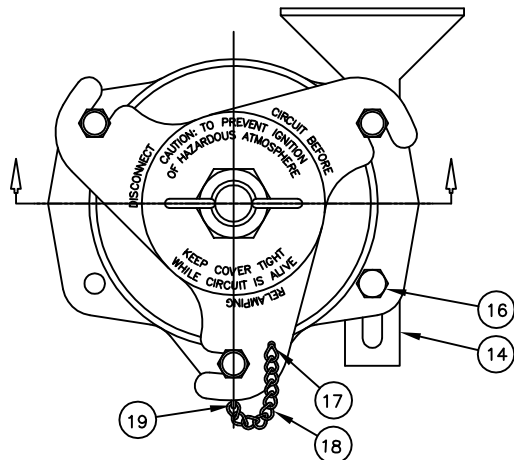
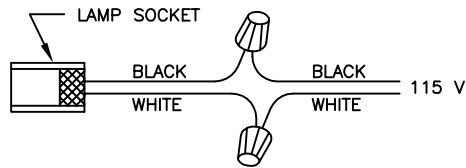


DIMENSIONAL DRAWING FOR  
 APPROVAL BY: ROMATEC  
 P.O. #: 01-00208325  
 OUR #: CO 238753  
 REF. TAG #: LG-51012; LG-51514; LG-51712

## BILL OF MATERIAL

PIECE NO.	NAME OF PART	QUAN.	MATERIAL	PART NO.
1	SINGLE WEDGE REFLECTOR	1	PLEXIGLASS	SEE TABLE
2	DOUBLE WEDGES REFLECTOR	1	PLEXIGLASS	SEE TABLE
3	LAMP HOUSING	1	CAST ALUM.	L-86
4	LAMP SOCKET ASSY.	1	ALUM.	S-2887
5	SOCKET LOCKING CLIP	1	HARD FIBRE	P-4140
6	#4-40 THD. SCREW	1	BRASS	P-2875
7	58 WATT LAMP, MED. BASE	1	-----	P-4598
8	STUD 1/4"-20	3	ALUM.	P-4141
9	WASHER	3	304 S.S.	P-2277
10	SPRING	3	304 S.S.	P-2262
11	NUT	3	ALUM.	P-2582
12	ACORN NUT 1/4"-20	3	ALUM.	P-4774
13	HOUSING CAP	1	ALUM.	P-2216
14	BRACKET	1	STEEL	V-11992
15	1/4"-20 NUT	4	ALUM.	P-4162
16	1/4"-20 HEX HD. SCREW	1	ALUM.	P-4145
17	COTTER PIN	1	S.S.	P-5655
18	CHAIN	1	GAL. STEEL	
19	"S" HOOK	1	GAL. STEEL	S-5223
20	LENS	1	GLASS	
21	WASHER	1	ALUM.	
22	LENS PLATE	1	ALUM.	
23	JAM NUT	1	ALUM.	S-3746
24	THUMB SCREW	1	ALUM.	
25	DRIVE PIN	1	STEEL	



SIZE	TABLE		CODE NO'S.	
	A	B		
8	10 13/16	16 1/8	EPL-56-851	EPL-56-852
9	11 13/16	18 1/8	EPL-56-951	EPL-56-952
10	12 13/16	20 1/8	EPL-56-1051	EPL-56-1052
11	13 13/16	22 1/8	EPL-56-1151	EPL-56-1152
12	15 1/16	25 1/8	EPL-56-1251	EPL-56-1252
13	16 1/16	27 1/8	EPL-56-1351	EPL-56-1352
14	---	13 3/8	EPL-56-1451	---
15	---	14 7/8	EPL-56-1551	---
16	---	15 3/8	EPL-56-1651	---
17	---	16 3/8	EPL-56-1751	---
18	---	17 3/8	EPL-56-1851	---
19	---	18 3/8	EPL-56-1951	---
20	---	20	EPL-56-2051	---
ASSEMBLY NO.		SIZES 8-13 14-20	A-9376 A-9378	A-9377
EPL-56 ILLUMINATOR HOUSING ASSEMBLY (LESS WEDGE, REFLECTOR, AND BRACKET)				S-3820

CLASS 1, GROUP C,D, DIVISION 1  
 CLASS 1, GROUP B, DIVISION 2

UL APPROVED NO E-22696 GUIDE NO. 120 12  
**EPL-56**  
**EXPLOSION PROOF ILLUM.**  
 FOR SERIES 5 & 12 GAGES

**JERGUSON**  
 GAGE & VALVE CO.  
 STRONGSVILLE, OHIO, U.S.A.

DRAWN  
 CMS  
 CHECKED  
 CEL  
 APPROVED

FILE NO.  
 DRAWING NO.  
**GD-1244**  
 REV. 9

SYM	REVISION	DATE	APP
9	REDRAWN & UPDATED	7/22/92	
8	ADDED WIRING DIAGRAM	5/8/87	
7	ADDED PIECE #15 RR-3649	4/12/83	
6	REDRAWN	6/17/76	

SCALE NONE DATE 7/22/92