

MODEL NUMBER (EXAMPLE ONLY)

EPL-100-9 1 1 1

MOUNTING BRACKET

- 1 = SERIES 20/32 CS COVERS
- 2 = SERIES L10/20/32 SS COVERS, 300L CS/SS
- 3 = SERIES 12 (OBSOLETE)
- 4 = SERIES 20/32 CS COVERS & NF EXTENSION
- 5 = SERIES L10/20/32 SS COVERS & NF EXTENSION
- 6 = SERIES 30/900# BOILER WATER GAGES
- 7 = RELIANCE FG450/900
- 8 = RELIANCE FG1500
- 9 = SERIES 40/1100# & 1600# BOILER WATER GAGES
- 10 = PENBERTHY M SERIES
- 11 = JOGLER

NUMBER OF GAGE SECTIONS

PREWIRED TERMINAL BLOCK CONNECTIONS

- 1 = PREWIRED LEADS FOR 115 VAC 50/60HZ
- 2 = PREWIRED LEADS FOR 230 VAC 50/60HZ

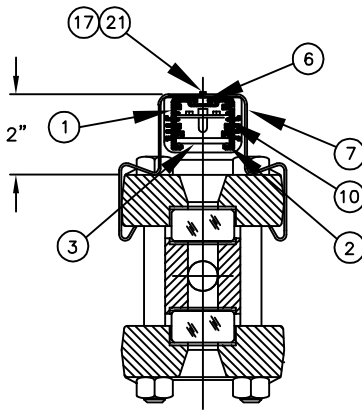
GAGE WINDOW GLASS SIZE (1 THRU 9; 11 THRU 20)

LED ILLUMINATOR

115 OR 230 VAC, 50/60HZ

BILL OF MATERIAL

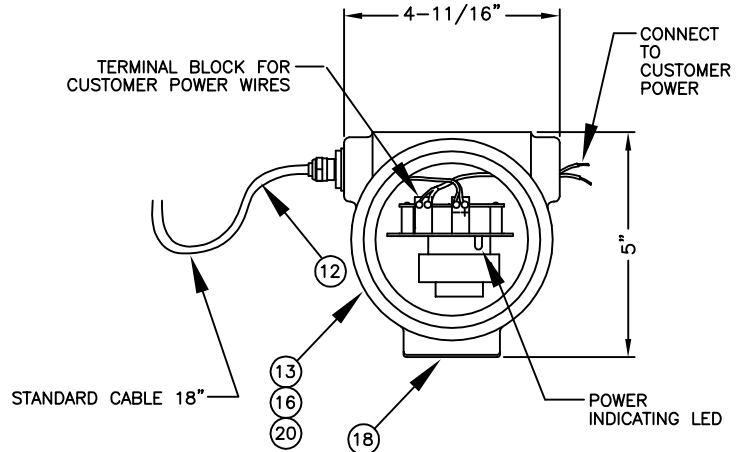
| PIECE NO. | NAME OF PART | QTY. | PART NO. | REMARKS |
|-----------|-----------------------------|------|----------------|------------|
| 1 | EXTRUSION | 1 | V-20466-E7-ANN | ALUMINUM |
| 2 | O-RING CORD | 1 | V-20556 | SILICON |
| 3 | GLASS PLATE | 1 | V-18973 | |
| 4 | END GASKET TOP | 1 | V-20470 | SILICON |
| 5 | END GASKET BOTTOM | 1 | V-20471 | SILICON |
| 6 | T-SLOT NUT | 2 | V-20574-E6 | ALUMINUM |
| 7 | BRACKET | 2 | V-20491-RL | 304 SS |
| 8 | #4-40x3/8 SCREW | 8 | V-172715 | |
| 9 | CORD GRIP | 1 | V-20390 | |
| 10 | BUILT LIGHT STRIP BOARD | 1 | S-23174 | SPARE PART |
| 11 | BUILT END BOARD | 1 | S-23174-END | |
| 12 | CORD, INTRICALLY SAFE | 1 | V-20509 | |
| 13 | POWER SUPPLY | 1 | TA-4856-120 | SPARE PART |
| 14 | END PLATE TOP | 1 | V-20472-R | 304 SS |
| 15 | END PLATE BOTTOM | 1 | V-20473-R | 304 SS |
| 16 | POWER SUPPLY BRACKET | 1 | V-20474-E6 | ALUMINUM |
| 17 | #6-32x1/2 THUMB SCREW | 2 | V-20578 | |
| 18 | POWER SUPPLY LABEL | 1 | V-20484 | |
| 19 | LUMENATOR LABEL | 1 | V-20487-E | |
| 20 | POWER SUPPLY MOUNTING SCREW | 2 | X177422 | |
| 21 | #6-32x1/4 THUMB SCREW | 2 | V-20579 | SPARE PART |



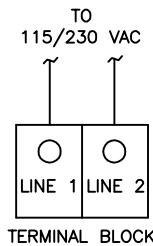
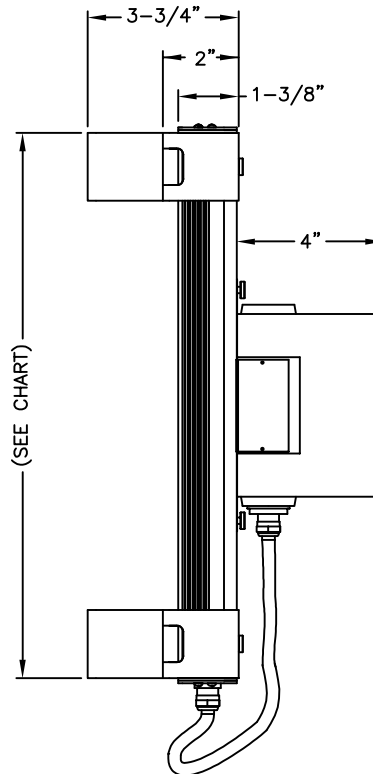
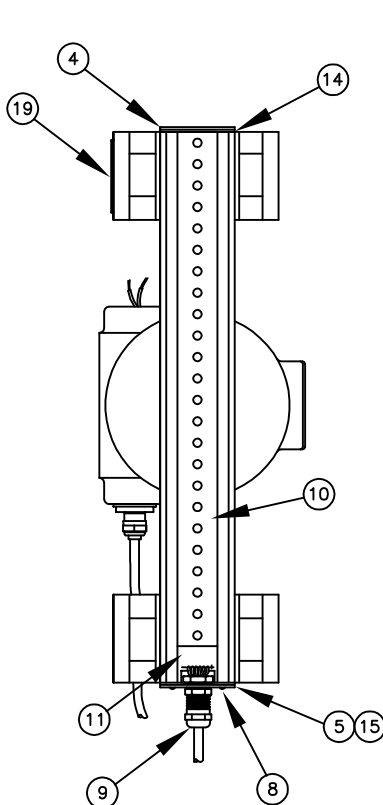
SECTION VIEW

ILLUMINATOR SHOWN MOUNTED TO LEVEL GAGE ASSEMBLY

(SHOWN WITHOUT POWER SUPPLY FOR CLARITY)



POWER SUPPLY VIEW



WIRING SCHEMATIC

NUMBER OF SECTIONS

| SERIES 20/32/L10 | | | | | |
|------------------|-------|-------|-------|-------|-------|
| | 1 | 2 | 3 | 4 | 5 |
| 1 | 5.25 | | | | |
| 2 | 5.25 | | | | |
| 3 | 7.25 | 15.25 | | | |
| 4 | 7.25 | 17.25 | | | |
| 5 | 9.25 | 19.25 | | | |
| 6 | 11.25 | 21.25 | 31.25 | | |
| 7 | 11.25 | 23.25 | 35.25 | 47.25 | 59.25 |
| 8 | 13.25 | 27.25 | 39.25 | 53.25 | |
| 9 | 13.25 | 29.25 | 41.25 | 57.25 | |
| SERIES 300L | | | | | |
| 11 | 11.25 | 23.25 | 35.25 | 47.25 | |
| 12 | 13.25 | 25.25 | 39.25 | 51.25 | |
| 13 | 13.25 | 27.25 | 41.25 | 55.25 | |
| 15 | 15.25 | 31.25 | 47.25 | | |
| 18 | 19.25 | 37.25 | 57.25 | | |
| 20 | 21.25 | 41.25 | | | |

| SYM | REVISION | DATE | APP |
|-----|----------------------|---------|-----|
| | UPDATED CORD LENGTH | 3/18/08 | |
| | ADDED DIMENSIONS | 7/26/07 | |
| | UPDATED POWER SOURCE | 7/26/07 | |

ASSEMBLY,
EPL-100 LUMASTAR

JERGUSON
GAGE & VALVE CO.
STRONGSVILLE, OHIO, U.S.A.

| | |
|----------|-------------|
| DRAWN SH | FILE NO. |
| CHECKED | DRAWING NO. |
| APPROVED | EPL-100 |
| | REV. 2 |

SCALE NONE DATE 3/18/08