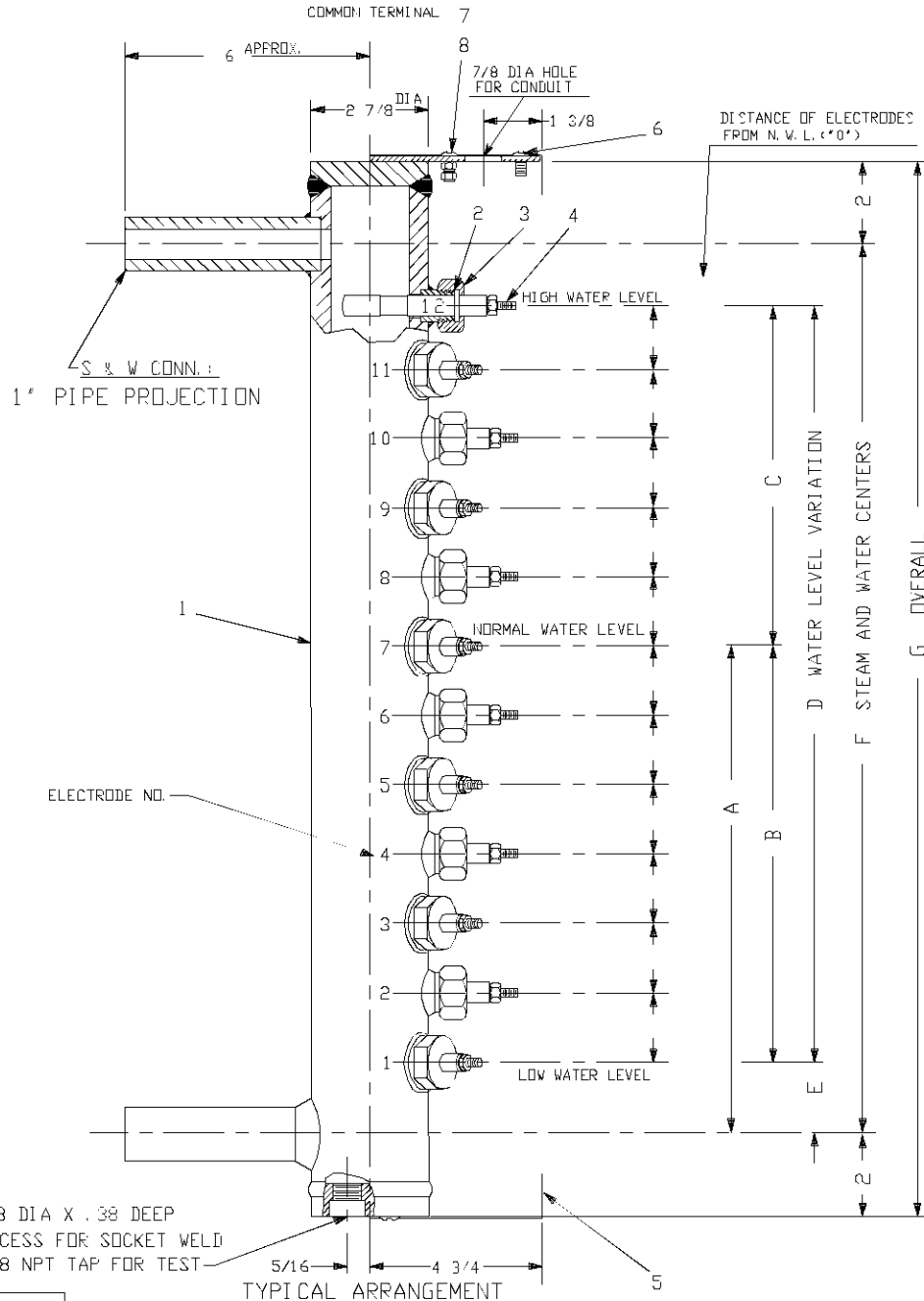


ELECTROLEV FURNISHED WITH 30-INCH,
HIGH-TEMPERATURE LEADS CONNECTED TO
EACH ELECTRODE FITTING
USE 18 A. W. G. TEFLON INSULATED WIRE
TYPE MIL-W 25038

BILL OF MATERIAL

ITEM	PART NO.	QTY.	DESCRIPTION	MATERIAL	DWG. NO.
1	ELF-1F	1	BODY, SEAMLESS STEEL PIPE	ASTM A106	
2	E10-10S	12	GASKET	MONEL-SILVER	A-5418
3	ZFR-3	12	COUPLING NUT	STEEL	B-8919
4	FG031	12	ELECTRODE FITTING ASSEMBLY		AB-18603
5	ELF-23	1	ELECTRODE FITTING HOUSING	STN. STL.	EL7032-B
6		2	SCREW, R. H. MACH. 10-24 X 3/8	STN. STL.	
7		1	SCREW, R. H. MACH. 10-24 X 1/2	STN. STL.	
8		2	NUT, HEX 10-24	STN. STL.	

FOR PRESSURES UP TO 1800 P. S. I.
SEE DWG. NO. B-9043



A	
B	
C	
D	
E	
F	
G	

ELECTRODE NO.	
12	
11	
10	
9	
8	
7	
6	
5	
4	
3	
2	
1	

MODEL NO. ELF3000-12
W. S. P. 1801-3000 P. S. I. AT 695°F.
HYDROTEST AT 4500 P. S. I.

NOTES:

- 1) CUSTOMER TO SPECIFY TYPE OF S & W CONN.
- 2) SHUTOFF VALVES SHOULD BE PLACED BETWEEN STEAM DRUM AND ELECTROLEV
- 3) W. S. P. UP TO 3000 P. S. I. HYDROTEST AT 4500 P. S. I.

THE CLARK-RELIANCE CORP. STRONGSVILLE, OHIO U. S. A.	
ELF 3000-12 ELECTROLEV ASSEMBLY	
SCALE NONE	DATE 11-26-91
DRAWN BY FAS	
TRACED BY	
CHECKED BY	NO. SK1-28-91