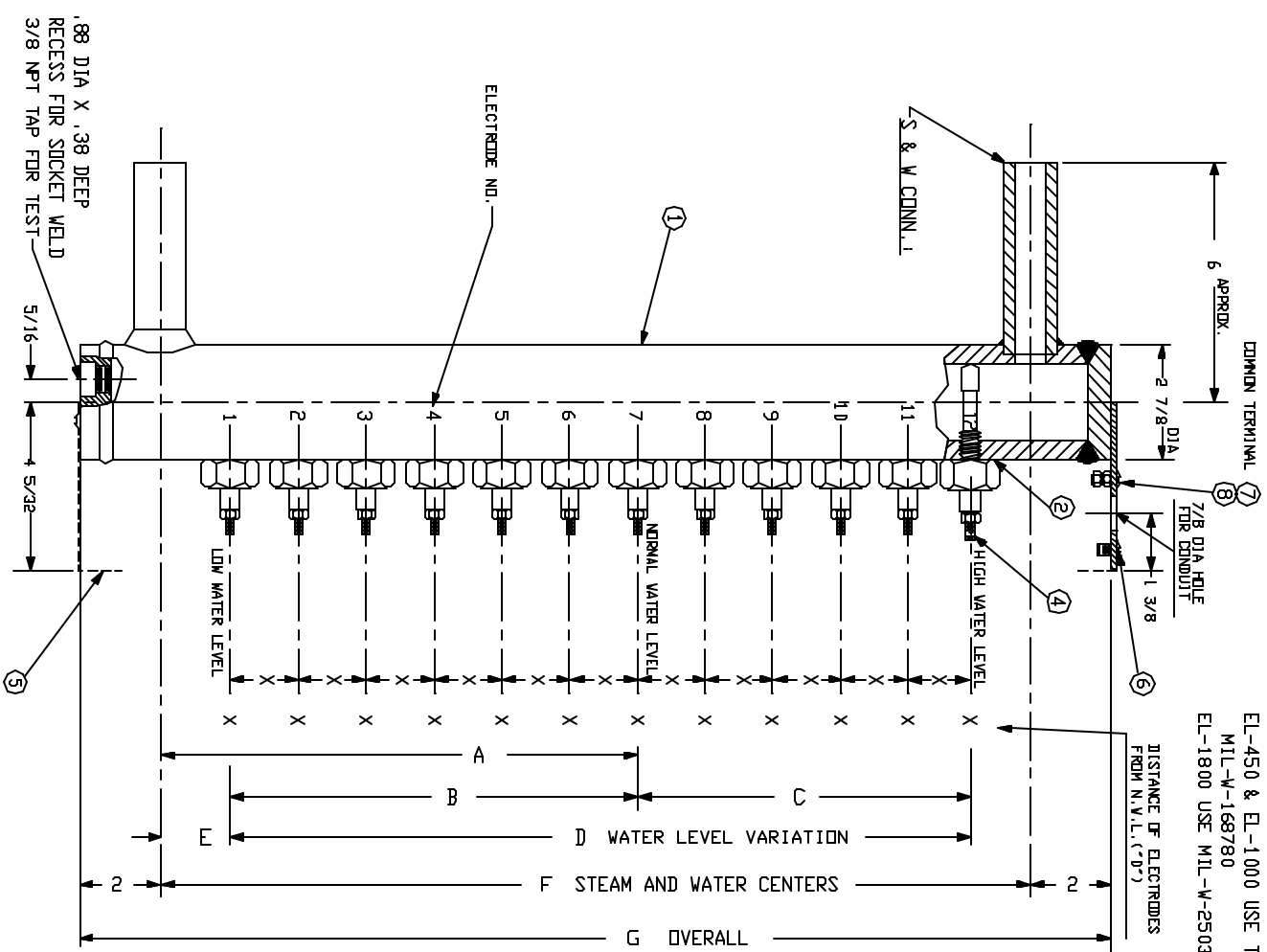


ELECTRODELY FURNISHED WITH 30-INCH, HIGH-TEMPERATURE LEADS CONNECTED TO EACH ELECTRODE FITTING USE 18 A.V.G. TEFLON INSULATED WIRE EL-450 & EL-1000 USE TYPE E MIL-W-168780 EL-1800 USE MIL-W-25038



BILL OF MATERIAL

ITEM	PART NO.	QTY.	DESCRIPTION	MATERIAL	DWG. NO.
1	ELF-1P	1	BODY, SEAMLESS STEEL PIPE	ASTM A106	
2	X	12	GASKET		
3					
4	X	12	ELECTRODE FITTING ASSEMBLY		
5	ELF-2	1	ELECTRODE FITTING HOUSING	STN. STL.	B-9124
6		2	SCREW, R.H. MACH. 10-24 X 3/8	STN. STL.	
7		1	SCREW, R.H. MACH. 10-24 X 1/2	STN. STL.	
8		2	NUT, HEX 10-24	STN. STL.	

A	X
B	X
C	X
D	X
E	X
F	X
G	X

ELECTRODE NO.	
12	X
11	X
10	X
9	X
8	X
7	X
6	X
5	X
4	X
3	X
2	X
1	X

MODEL NO. X
 W.S.P. X
 P.S.I. AT X
 HYDROTEST AT X
 P.S.I.

NOTES:
 1) FOR PRESSURES OVER 1800 PSI SEE ELF 3000 ELECTRODELY ASSEMBLY PER DWG. NO. B-9122
 2) SHUTOFF VALVES SHOULD BE PLACED BETWEEN STEAM JIRUM AND ELECTRODELY

THE CLARK-RELIANCE CORP.
 STRINGSVILLE, OHIO U.S.A.

ELECTRODELY ASSEMBLY
 X

SCALE _____ DATE _____
 DRAWN BY _____
 TRACED BY _____
 CHECKED BY _____
 NO. _____