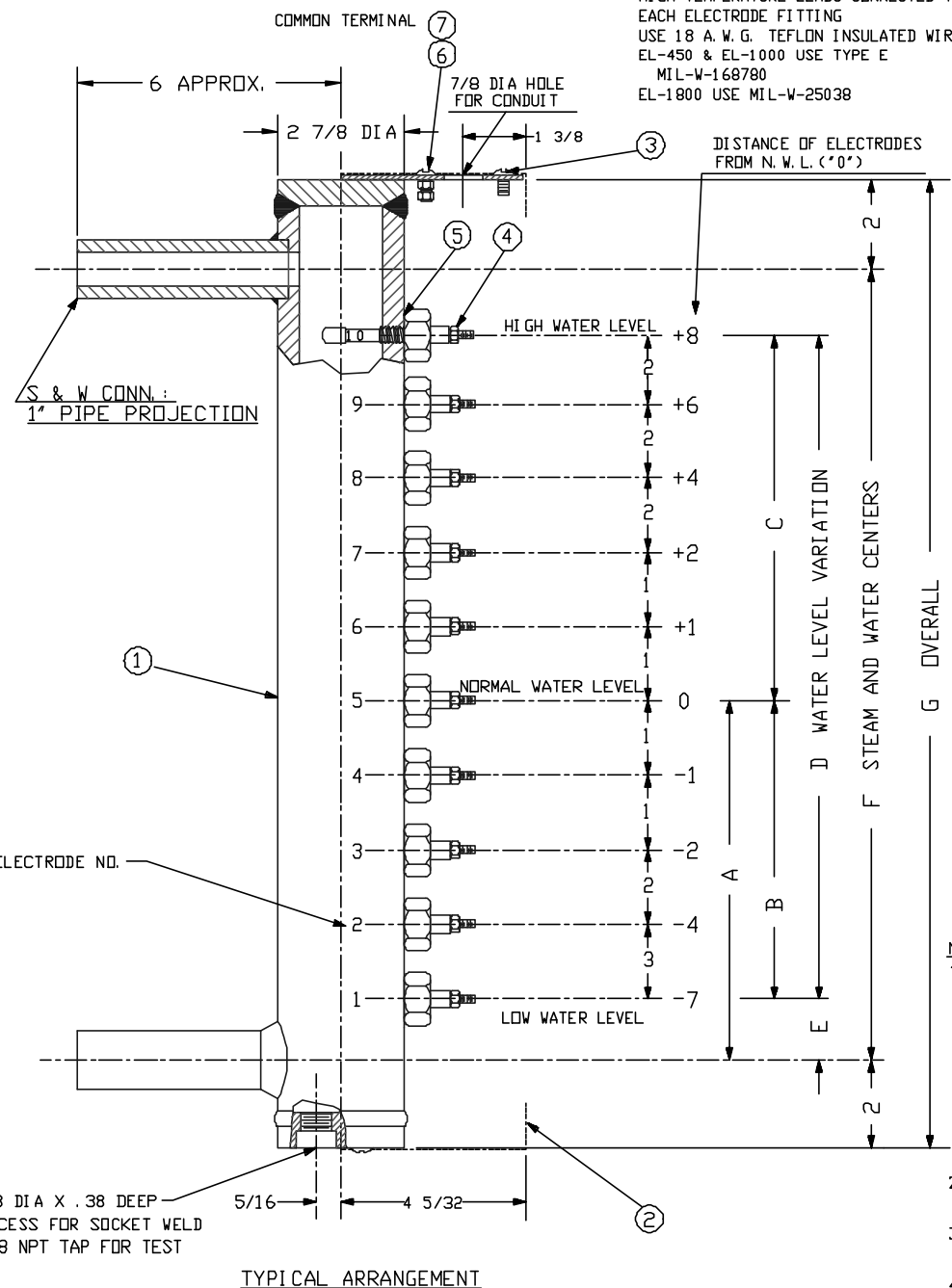


ELECTROLEV FURNISHED WITH 30-INCH, HIGH-TEMPERATURE LEADS CONNECTED TO EACH ELECTRODE FITTING
 USE 18 A.W.G. TEFLON INSULATED WIRE
 EL-450 & EL-1000 USE TYPE E
 MIL-W-168780
 EL-1800 USE MIL-W-25038

BILL OF MATERIAL

ITEM	PART NO.	QTY.	DESCRIPTION	MATERIAL	DWG. NO.
1	EL-1P	1	BODY, SEAMLESS STEEL PIPE	ASTM A106	
2	ELF-2	1	ELECTRODE FITTING HOUSING	SHEET STL.	B-9124
3		2	SCREW, R. H. MACH. 10-24 X 3/8	BRASS	
4	*	10	ELECTRODE FITTING ASSEMBLY		
5	+	10	GASKET		
6		1	SCREW, R. H. MACH. 10-24 X 1/2	BRASS	
7		2	NUT, HEX 10-24	BRASS	



	DIMENSIONS AS SHOWN ON "TYPICAL" ARRANGEMENT		DIMENSIONS TO BE SPECIFIED BY CUSTOMER TO SUIT REQUIREMENTS		ELECTRODE NO. SPACING OF ELECTRODES AS SHOWN ON "TYPICAL" ARRANGEMENT		DIMENSIONS TO BE SPECIFIED BY CUSTOMER (MINIMUM 1" SPACING BETWEEN PROBES)	
A	8	1 1/2			10	+8		
B	7				9	+6		
C	8				8	+4		
D	15				7	+2		
E	1	1 1/2			6	+1		
F	18				5	0		
G	22				4	-1		
					3	-2		
					2	-4		
					1	-7		

NOTE - MODEL NO

- 1- (A) EL450-10 W.S.P. 0-450 P.S.I. AT 456°F.
 * T020 ELECTRODE FITTING
 + WCM-13 GASKET
 HYDROTEST AT 700 P.S.I.
- (B) EL1000-10 W.S.P. 451-1000 P.S.I. AT 545°F.
 * V020 ELECTRODE FITTING
 + X175500 GASKET
 HYDROTEST AT 1500 P.S.I.
- (C) EL1800-10 W.S.P. 1001-1800 P.S.I. AT 621°F.
 * Z020 ELECTRODE FITTING
 + E10-105 GASKET
 HYDROTEST AT 2700 P.S.I.
- 2- CUSTOMER TO SPECIFY:
 (A) MODEL OF ELECTROLEV
 (B) TYPE OF S. & W. CONNECTION REQUIRED
- 3- FOR PRESSURES OVER 1800 P.S.I. SEE ELF3000-10 ELECTROLEV ASSEMBLY PER DWG. NO. B-9122
- 4- SHUTOFF VALVES SHOULD BE PLACED BETWEEN STEAM DRUM AND ELECTROLEV

THE CLARK-RELIANCE CORP.
 STRONGSVILLE, OHIO U. S. A.
 MODEL EL450-10,
 EL1000-10 & EL1800-10
 ELECTROLEV ASSEMBLY
 SCALE NONE DATE 3-16-94
 DRAWN BY ST
 TRACED BY
 CHECKED BY
 NO. B9043-11