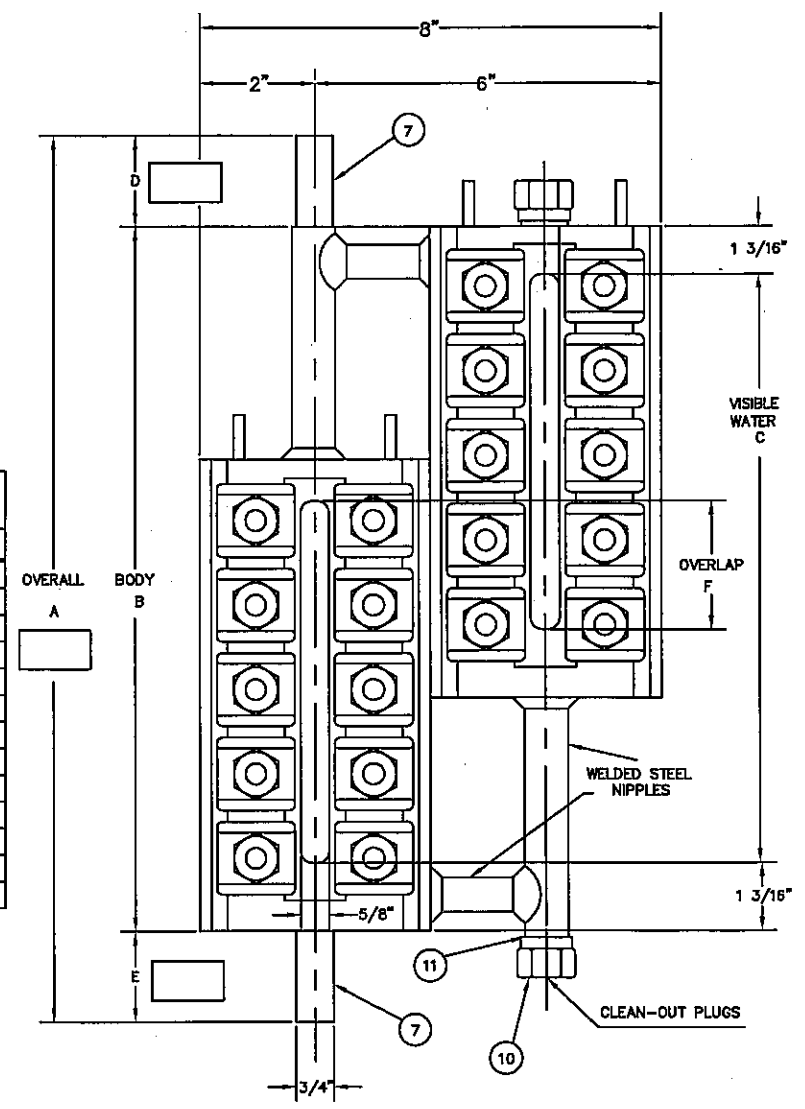


### LIST OF MATERIAL PER WINDOW

ITEM	PART NO.	REQ	DESCRIPTION	MATERIAL	DWG. NO.
1	FG*-1	1	BODY	STEEL	
2	*G89 60	2	SEALING GASKET	GRAFOL	B-11060
3	X173710		STUDS 7/16-20 X 5 3/8 (FG900-1)	A193-B7	B-6567
4	PG+-2	2	COVER PLATES, 5/8" SLOT	STEEL	A-3749
5	M40-6		CLAMPS PATT. NO. 4892	STEEL	A-4892
6	X171451		HEX. NUTS, 7/16"-20 THR'D. (M40-7)	A194-2H	
7	PG4-***		NIPPLES	304SS	AB-15424
8	V16758-*	2	GLASS-PLAIN FLAT (HIGH PRES)	GLASS	V16758
9	X174212		WASHERS, 7/8" O.D. X 15/32" I.D. X 5/32" THK (M40-10)	STEEL	
10	E10-9	4	HEX. PLUGS, 5/8"-18 THR'D.	STEEL	A-6805
11	E10-10	4	GASKETS, 7/8" X 5/8" I.D.	MONEL	A-5418
12	FG+0-3	2	UNITS MICA .007" TO .010" THICK	MICA	B-7701
13	V18980*	2	CUSHION GASKET	FIBER	

TO COMPLETE PART NO.: \* ADD GAGE NO. + ADD LAST NUMERAL OF GAGE NO.  
 \*\*\* ADD NIPPLE LENGTH IN INCHES AND EIGHTHS.



### STANDARD SIZES

GAGE NO.	A	B	C	D	E	QUAN. NO. STUDS	MIN. SG854 W.G. CTRS
FG904		8 1/8"	6 5/8"			10	17
FG905		9 1/4"	7 3/4"			10	18
FG906		10 1/2"	9"			12	20
FG907		11 5/8"	10 1/8"			14	21
FG908		13 1/4"	11 3/4"			16	22
FG909		14"	12 1/2"			16	23

WITH SG854 SERIES VALVES D=3 1/8, E=2 1/4 ( MIN. )  
 WITH 403RS, 404RS SERIES VALVES D=1 3/4, E=1 3/8 ( MIN. )

WORKING STEAM PRESSURE 900 P.S.I.  
 HYDROSTATIC TEST AT 1400 P.S.I.

### STANDARD SIZES

GAGE NO.	A	B	C	D	E	F	QUAN. NO. STUDS	MIN. SG854 W.G. CTRS
FG966		17 3/8"	15"			3"	24	26
FG977		19 7/8"	17 1/2"			2 3/4"	28	29
FG988		22 3/8"	20"			3 1/2"	32	31
FG999		23 7/8"	21 1/2"			3 1/2"	32	33

14 REMOVE SIDE CLEAN OUT COIL. 12/25/84 ST 13 ITEM 13 CUSHION GASKET WAS V17280 6-2-84 FAS 12 MATERIAL UPDATE / REDRAW 10-6-82 LS REV DESCRIPTION DATE SIG		UNLESS OTHERWISE NOTED: TELEPHONE CO. RECORDS & STUDS FIN. FRACTIONAL (UP TO 1", NOT INCL.) 1/16 FIN. FRACTIONAL (1" INCL., UP TO 3") 1/32 FIN. FRACTIONAL (3" INCL., UP TO 6") 1/8 FIN. FRACTIONAL (6" INCL., UP TO 12") 1/4 FIN. FRACTIONAL (12" & OVER) 1/2 ANGLES UNLESS OTHERWISE NOTED: FINISH: MILL OR SMOOTH REMOVE BURRS AND SHARP EDGES	THE CLARK-RELIANCE CORP. STRONGSVILLE, OHIO FG 900 SERIES MICA-PROTECTED FLAT GLASS GAGE	MATERIAL DRAWN LS DATE 10-6-82 SCALING DATE DRAWING NO. B-7010 REV. 14
---	--	--	---	---