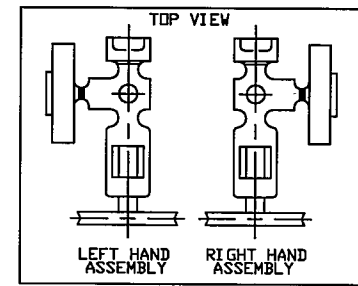
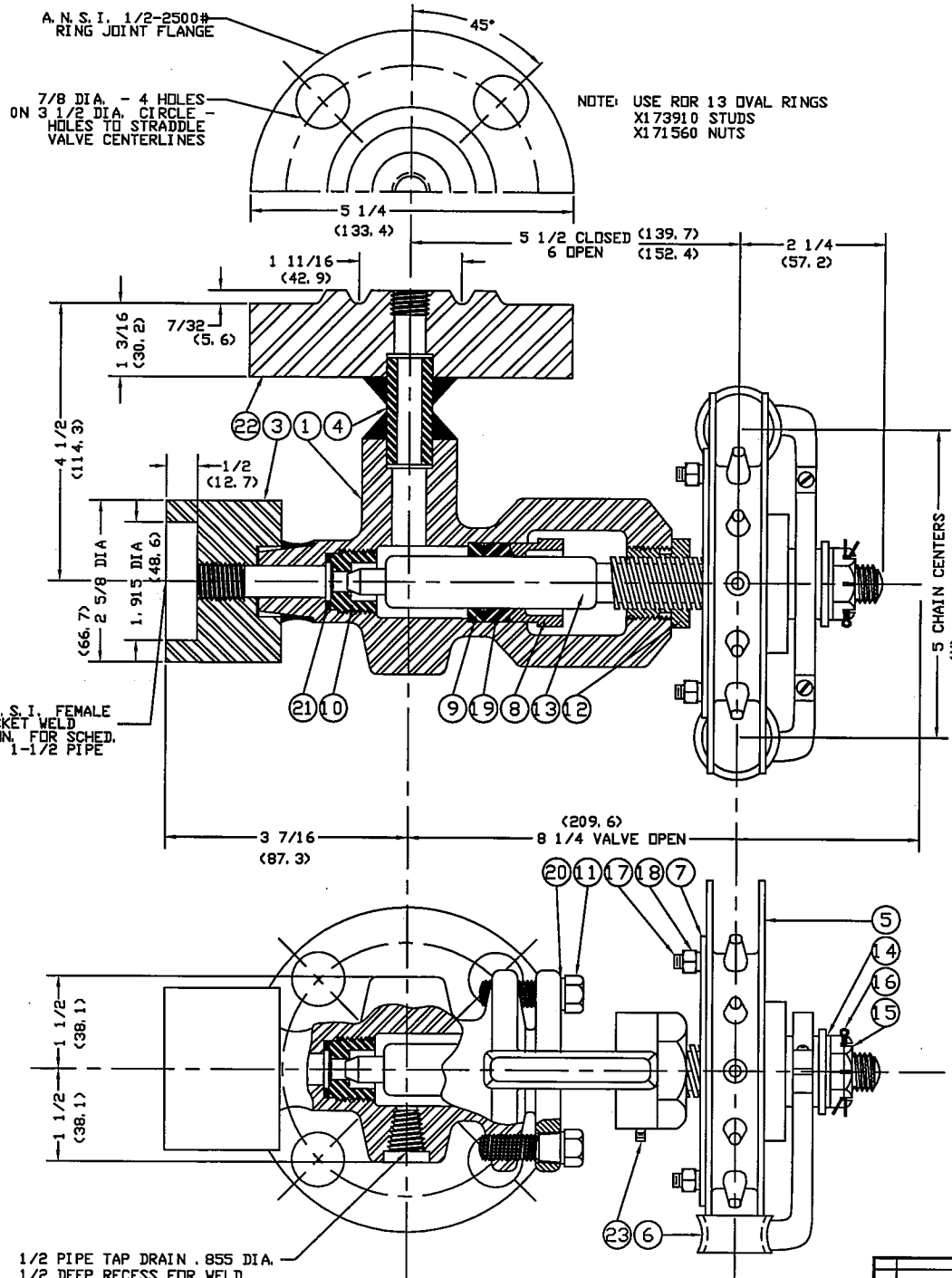


# BILL OF MATERIAL - PER SET

ITEM	PART NO.	QUAN.	DESCRIPTION	MATERIAL	DWG NO.
1	SG777-1	1	VALVE BODY, LOWER(FORGED STL.)	ASTM A105	B-9197
2	SG777-1A	1	VALVE BODY, UPPER(FORGED STL.)	ATSM A105	B-9197
3	SG777-2	2	SOCKET WELD ADAPTOR	CARBON STEEL	B-9198
4	SG777-3	2	CONNECTOR	A106 GR. B	B-9197
5	SG777-4	2	SPROCKET CHAIN WHEEL	CAST IRON	
6	SG777-5	2	CHAIN GUIDE	CAST IRON	
7	SG777-6	2	SPIDER ADAPTOR	CAST IRON	B-8278
8	SG754-2	2	PACKING YOKE (DUCTILE IRON)	ASTM A395-55T	B-9198
9	SG754-3	2	PACKING WASHER	C1018 STEEL	B-9198
10	SG454-24	2	SEAT	420 STNLS. STL.	SG7017-A
11	X172341	4	CAP SCREW, HEX 7/16-14x1 1/2	STEEL - GR. B7	
12	SG754-6	2	STEM BUSHING	416 STNLS. STL.	B-9198
13	SG754-7	2	STEM	303 STNLS. STL.	B-9198
14	X174220	2	PLAIN WASHER, 17/32 ID, 11/16 DD	STEEL	
15	X171480	2	SLOTTED HEX NUT, SEMI-FINISH, 1/2-13	STEEL	
16	X171790	2	CUTTER PIN, 1/8 x 1 1/4	STEEL	
17	X171000	6	CARRIAGE BOLT, 5/16-18 x 1	STEEL	
18	X171320	6	SQUARE NUT, 5/16-18	STEEL	
19	SG854-4	2	STEM PACKING CARTIDGE	GRAFOIL	SG7021-A
20	X174212	4	PLAIN WASHER, 15/32 ID, 59/64 DD	STEEL	
21	X175500	2	VALVE SEAT GASKET	MONEL	A-5418
22	SG477-2	2	FLANGE 1/2-2500# R. T. J.	ASTM A105	A-5819
23	X173121	2	ALLEN CUP POINT SET SCREW, 10-24x5/8	STEEL	

NOTE: ON UPPER VALVE, CHAIN WHEEL AND GUIDE ARE ASSEMBLED IN REVERSE POSITION.  
DIMENSIONS IN ( ) ARE IN MILLIMETERS



PLEASE SELECT ARRANGEMENT REQUIRED

MAXIMUM PRESSURE RATING:  
2500 P. S. I. @ 670°F  
HYDROTEST AT 3750 P. S. I.

REV	REVISION	DATE	BY	CHK	APP	DESCRIPTION
1	ISSUED FOR PRODUCTION	11/25/76	WJ	WJ		
2	REVISED TO SHOW 1/2" TAP DRAIN	12/15/76	WJ	WJ		
3	REVISED TO SHOW 1/2" TAP DRAIN	1/15/77	WJ	WJ		
4	REVISED TO SHOW 1/2" TAP DRAIN	2/15/77	WJ	WJ		
5	REVISED TO SHOW 1/2" TAP DRAIN	3/15/77	WJ	WJ		
6	REVISED TO SHOW 1/2" TAP DRAIN	4/15/77	WJ	WJ		
7	REVISED TO SHOW 1/2" TAP DRAIN	5/15/77	WJ	WJ		
8	REVISED TO SHOW 1/2" TAP DRAIN	6/15/77	WJ	WJ		
9	REVISED TO SHOW 1/2" TAP DRAIN	7/15/77	WJ	WJ		
10	REVISED TO SHOW 1/2" TAP DRAIN	8/15/77	WJ	WJ		
11	REVISED TO SHOW 1/2" TAP DRAIN	9/15/77	WJ	WJ		
12	REVISED TO SHOW 1/2" TAP DRAIN	10/15/77	WJ	WJ		
13	REVISED TO SHOW 1/2" TAP DRAIN	11/15/77	WJ	WJ		
14	REVISED TO SHOW 1/2" TAP DRAIN	12/15/77	WJ	WJ		
15	REVISED TO SHOW 1/2" TAP DRAIN	1/15/78	WJ	WJ		
16	REVISED TO SHOW 1/2" TAP DRAIN	2/15/78	WJ	WJ		
17	REVISED TO SHOW 1/2" TAP DRAIN	3/15/78	WJ	WJ		
18	REVISED TO SHOW 1/2" TAP DRAIN	4/15/78	WJ	WJ		
19	REVISED TO SHOW 1/2" TAP DRAIN	5/15/78	WJ	WJ		
20	REVISED TO SHOW 1/2" TAP DRAIN	6/15/78	WJ	WJ		
21	REVISED TO SHOW 1/2" TAP DRAIN	7/15/78	WJ	WJ		
22	REVISED TO SHOW 1/2" TAP DRAIN	8/15/78	WJ	WJ		
23	REVISED TO SHOW 1/2" TAP DRAIN	9/15/78	WJ	WJ		
24	REVISED TO SHOW 1/2" TAP DRAIN	10/15/78	WJ	WJ		
25	REVISED TO SHOW 1/2" TAP DRAIN	11/15/78	WJ	WJ		
26	REVISED TO SHOW 1/2" TAP DRAIN	12/15/78	WJ	WJ		
27	REVISED TO SHOW 1/2" TAP DRAIN	1/15/79	WJ	WJ		
28	REVISED TO SHOW 1/2" TAP DRAIN	2/15/79	WJ	WJ		
29	REVISED TO SHOW 1/2" TAP DRAIN	3/15/79	WJ	WJ		
30	REVISED TO SHOW 1/2" TAP DRAIN	4/15/79	WJ	WJ		
31	REVISED TO SHOW 1/2" TAP DRAIN	5/15/79	WJ	WJ		
32	REVISED TO SHOW 1/2" TAP DRAIN	6/15/79	WJ	WJ		
33	REVISED TO SHOW 1/2" TAP DRAIN	7/15/79	WJ	WJ		
34	REVISED TO SHOW 1/2" TAP DRAIN	8/15/79	WJ	WJ		
35	REVISED TO SHOW 1/2" TAP DRAIN	9/15/79	WJ	WJ		
36	REVISED TO SHOW 1/2" TAP DRAIN	10/15/79	WJ	WJ		
37	REVISED TO SHOW 1/2" TAP DRAIN	11/15/79	WJ	WJ		
38	REVISED TO SHOW 1/2" TAP DRAIN	12/15/79	WJ	WJ		
39	REVISED TO SHOW 1/2" TAP DRAIN	1/15/80	WJ	WJ		
40	REVISED TO SHOW 1/2" TAP DRAIN	2/15/80	WJ	WJ		
41	REVISED TO SHOW 1/2" TAP DRAIN	3/15/80	WJ	WJ		
42	REVISED TO SHOW 1/2" TAP DRAIN	4/15/80	WJ	WJ		
43	REVISED TO SHOW 1/2" TAP DRAIN	5/15/80	WJ	WJ		
44	REVISED TO SHOW 1/2" TAP DRAIN	6/15/80	WJ	WJ		
45	REVISED TO SHOW 1/2" TAP DRAIN	7/15/80	WJ	WJ		
46	REVISED TO SHOW 1/2" TAP DRAIN	8/15/80	WJ	WJ		
47	REVISED TO SHOW 1/2" TAP DRAIN	9/15/80	WJ	WJ		
48	REVISED TO SHOW 1/2" TAP DRAIN	10/15/80	WJ	WJ		
49	REVISED TO SHOW 1/2" TAP DRAIN	11/15/80	WJ	WJ		
50	REVISED TO SHOW 1/2" TAP DRAIN	12/15/80	WJ	WJ		

**THE CLARK-RELIANCE CORP.**  
STRONGSVILLE, OHIO

SG777 FORGED STEEL  
WATER GAGE VALVE

MATERIAL  
B-9203 9