

DIMENSION CHART -- STANDARD SIZES

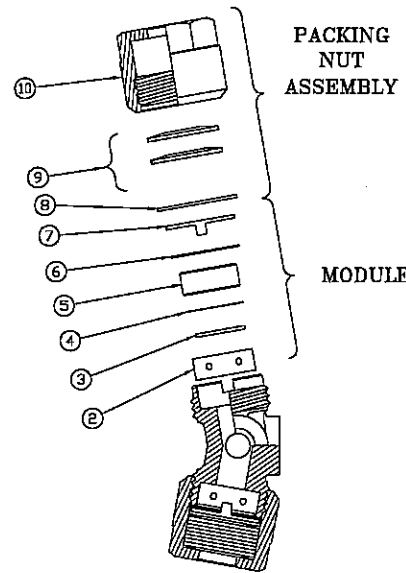
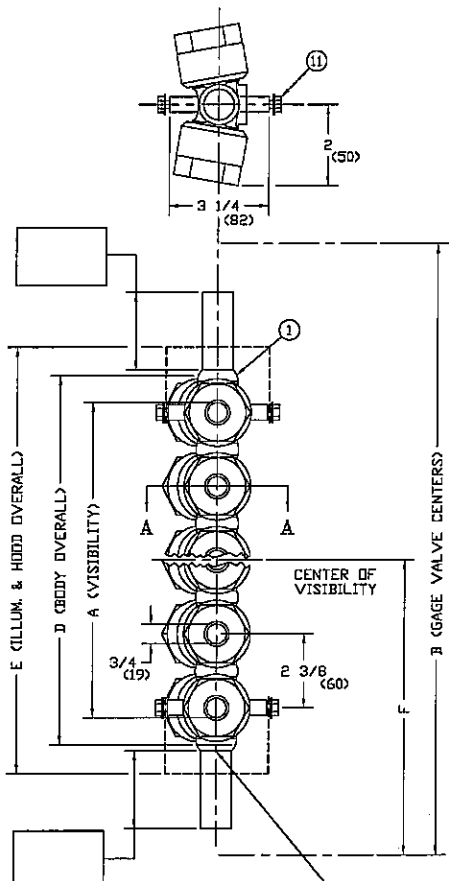
SIMPLIPORT PART NO.	NO. OF WINDOW UNITS	VISION A		MIN. WATER GAGE CENTERS FOR VALVE SERIES INDICATED				BODY D		E		F (MIN)			
		B		403RS 404RS		SG860 SG854						403RS 404RS		SG860 SG854	
		INCHES	MM	INCHES	MM	INCHES	MM	INCHES	MM	INCHES	MM	INCHES	MM	INCHES	MM
P3005	5	10 1/4 (260)	17 3/4 (450)	21 (533)	11 7/8 (301)	12 3/4 (323)	10 3/16 (258)	10 3/8 (263)							
P3006	6	12 5/8 (320)	20 1/8 (511)	23 3/8 (593)	14 1/4 (361)	15 1/8 (384)	11 3/8 (288)	11 9/16 (293)							
P3007	7	15 (381)	22 1/2 (571)	25 3/4 (654)	16 5/8 (422)	17 1/2 (444)	12 9/16 (319)	12 3/4 (323)							
P3008	8	17 3/8 (441)	24 7/8 (631)	28 1/8 (714)	19 (482)	19 7/8 (504)	13 3/4 (349)	13 15/16 (354)							
P3009	9	19 3/4 (501)	27 1/4 (692)	30 1/2 (774)	21 3/8 (542)	22 1/4 (565)	15 1/16 (382)	15 1/4 (387)							
P3010	10	22 1/8 (561)	29 5/8 (752)	32 7/8 (835)	23 3/4 (603)	24 5/8 (625)	16 1/8 (409)	16 5/16 (414)							

TO BE SPECIFIED BY CUSTOMER		
SIMPLIPORT PART NO.	B	F
ILLUMINATOR PART NO.	HOOD PART NO.	

BILL OF MATERIAL					
ITEM	PART NO.	QTY	DESCRIPTION	MATERIAL	DWG. NO.
1	P300*	1	BODY-WELDED ASSEMBLY	STN. STL.	B-14312
2	PW-61	2	MODULE RETAINER	STN. STL.	A-9871
3	PW-77	2	SEALING GASKET	MONEL	A-9865
4	PW-17	2	MICA SHIELD	MICA	PS7008-A
5	PW-18	2	GAGE GLASS	GLASS	A-10419
6	PW-63	2	CUSHION GASKET	COPPER	A-16020
7	PW-64	2	LUG WASHER	STN. STL.	A-10285
8	PW-40	2	SPRING RETAINER	STN. STL.	PS7003-A
9	PW-66	4	SPRING WASHER	STN. STL.	
10	PW-65	2	PACKING NUT	STEEL	PS7156-A
11	X172125	4	HEX-WASHER HD. SCR. 5/16-18 x 1/2	STN. STL.	

- NOTES:
- \* TO COMPLETE PART NO. ADD NO. OF WINDOW UNITS
  - ITEMS 2 THRU 10 FORM ONE COMPLETE ASSEMBLY OF SINGLE WINDOW UNIT
  - ITEMS 2 THRU 7 COMPRISE A REPLACEMENT PACKAGE CALLED A MODULE, TO BE ORDERED AS PART NO. PW-24BR (SEE EXPLODED VIEW)
  - ITEMS 8 THRU 10 COMPRISE A PACKING NUT ASSEMBLY, TO BE ORDERED AS PART NO. PW-68 (SEE EXPLODED VIEW)
  - ASSEMBLY OF ILLUMINATOR & HOOD ON GAGE REF. DWG. AB-14916

NOTE: UNCONTROLLED COPY LOCATED IN WELD DEPARTMENT



SECTION A-A  
EXPLODED VIEW  
OF SINGLE WINDOW UNIT

FIGURE A  
FOR NIPPLE CONNECTION (1500 PSI MAX)  
(10345 KPa MAXIMUM)

ITEM	PART NO.	DWG. NO.
SIMPLIPORT ILLUMINATORS:		
STANDARD	PI*	B-9131
WEATHERPROOF	PIW*	B-9133
EXPLOSION-PROOF	PIW*EP	B-10034
SIMPLIPORT HOODS:		
OPEN-END WEATHERPROOF	PHOW*	1-15-62
DIRECT-VISION WEATHERPROOF	PHOV*	B-10547
PERISCOPE-WEATHERPROOF	PHPW*	B-9133
PERISCOPE-WEATHERPROOF WITH SOCKET DUCT	PHPWS*	B-9134
PERISCOPE-WEATHERPROOF WITH FLANGED DUCT	PHPWF*	B-9134

DIMENSIONS IN INCHES  
DIMENSIONS IN ( ) MILLIMETERS

PATENT NO. 3,187,573  
HYDROTEST AT 2250 PSI  
(15518 KPa)

REV	DESCRIPTION	DATE	SIG
17	UPDATED MODULES AND NUTS	5/25/04	ST
16	ADD PW-74 GASKET RETAINER	4-11-01	FAS
15	REDRAWN PER CDC 95-127	8-15-95	BSL

UNLESS OTHERWISE NOTED  
TOLERANCES (G)  
DECIMAL & STOCK (0.002)  
FIN. FRACTIIONAL (UP TO 1", NOT INCL.) (0.010)  
FIN. FRACTIIONAL (1" INCL. UP TO 3") 1/64  
FIN. FRACTIIONAL (3" INCL. UP TO 6") 1/32  
FIN. FRACTIIONAL (6" INCL. UP TO 12") 1/16  
FIN. FRACTIIONAL (12" & OVER) 1/8  
ANGLES 1°  
MACHINE FINISH- 125√ OR SMOOTHER  
REMOVE BURRS AND SHARP EDGES

**CLARK-RELIANCE CORP.**  
STRONGSVILLE, OHIO, U.S.A.

SIMPLIPORT GAGE ASS'Y  
0-1500 WSP

MATERIAL	
SEE INDIVIDUAL PART DRAWINGS	
DRAWN	SCALE
BAC	NONE
CHKD.	DATE
	1/15/96
DRAWING NO.	REV.
B-9130	17