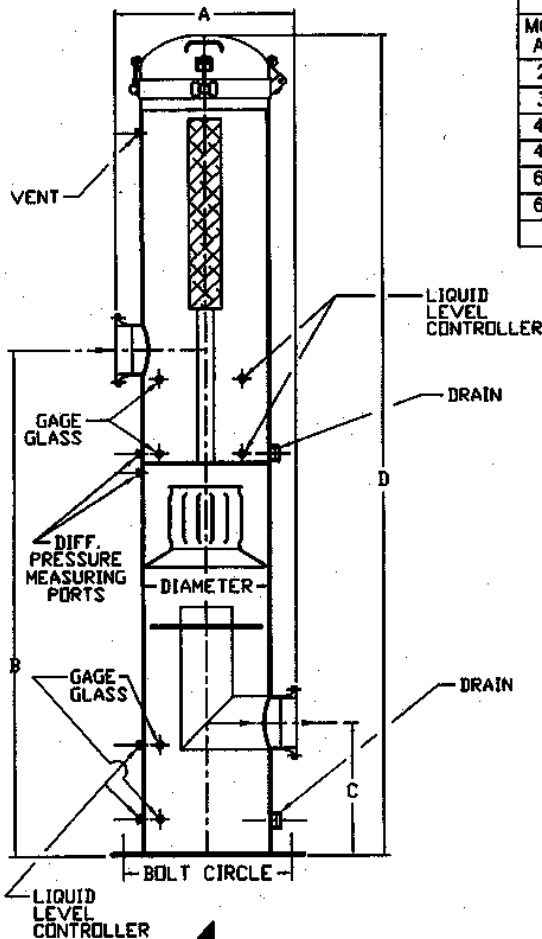


FILE NO.: A400-20.DWG
 DRAWN: DFM CHECKED: KES
 SCALE: NONE DATE: 3/16/96

ANDERSON™ SEPARATOR Co.
DIVISION OF
 THE CLARK-RELIANCE® CORP.
 18633 FOLTZ INDUSTRIAL PKWY.
 STRONGSVILLE, OHIO 44136 U.S.A. (440)-572-1500

MODEL AFS
 FUEL GAS FILTER SEPERATOR

Section: A400
 Bulletin: A400.20
 Date: 12/15/97
 Supersedes: 3/16/96



MODEL AFS-	SIZE			150#	300#	600#	900#	DIMENSIONS NOT FOR CONSTRUCTION				
	VESSEL DIAMETER	INLET/OUTLET	NO. OF FILTERS	A	A	A	A	B	C	D	BOLT CIRCLE	BOLT HOLES
2-6	6-5/8" OD	2"	1	19	19	19	23	53	18	94	9-1/8"	4Ø7/8"
3-8	8-5/8" OD	3"	1	21	21	25	25	56	19	100	11-1/8"	4Ø7/8"
4-10	10-3/4" OD	4"	2	23	27	27	27	58	20	109	15-1/4"	4Ø7/8"
4-12	12-3/4" OD	4"	3	25	29	29	29	58	20	114	18-1/2"	4Ø7/8"
6-14	14" OD	6"	3	30	30	30	34	65	21	114	18-1/2"	4Ø7/8"
6-16	16" OD	8"	4	32	32	32	36	65	21	115	18-1/2"	4Ø7/8"

NOTES:

- 1.) DESIGNED, FABRICATED AND STAMPED IN ACCORDANCE WITH ASME CODE SECTION VIII, DIVISION I.
- 2.) SEPARATION ELEMENTS AVAILABLE IN CARBON STEEL, 304-L & 316-L STAINLESS STEEL, OPTIONAL ALLOYS UPON REQUEST.
- 3.) SPECIAL MATERIALS, CONFIGURATIONS, AND HIGHER DESIGN PRESSURES AVAILABLE UPON REQUEST.
- 4.) ABOVE DIMENSIONS NOT FOR CONSTRUCTION.
- 5.) ALL DIMENSIONS IN INCHES UNLESS OTHERWISE NOTED.

STANDARD MATERIALS

HEADS	SA-516-70
SHELL	SA-106-B/C / SA-516-70
FLANGES	SA-105
FITTINGS	SA-105
PIPE	SA-106-B/C
SUPPORTS	SA-36 / SA-285
CLOSURE	CARBON STEEL
ELEMENT	SA-240 316/616L

HOW TO SPECIFY

AFS FG - [] - [] - []

MODEL
 VERTICAL FUEL GAS
 LINE SIZE
 VESSEL DIAMETER
 DESIGN PRESSURE

AVAILABLE CONNECTIONS

DRAINS: _____
 VENT: _____
 L.L.C.: _____
 DIFF. PRESS.: _____
 INSPECTION: _____
 GAGE GLASS: _____
 OTHER: _____



A.S.M.E. CODE STAMPS

