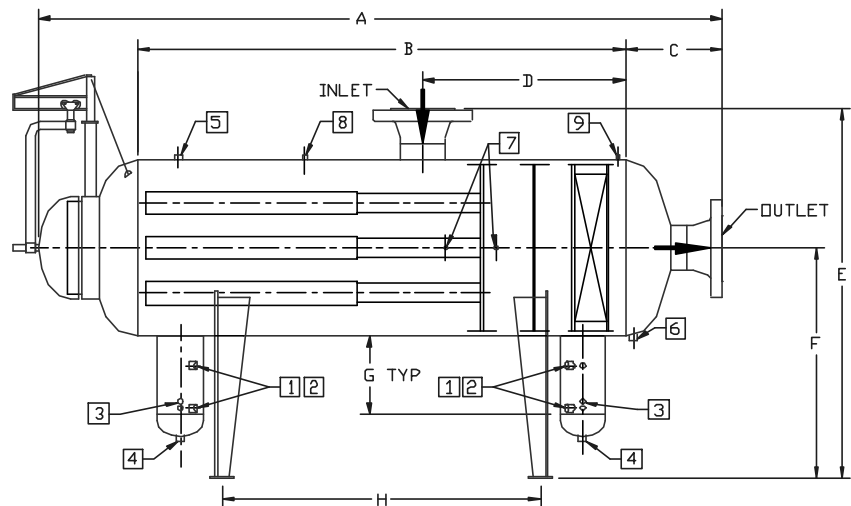
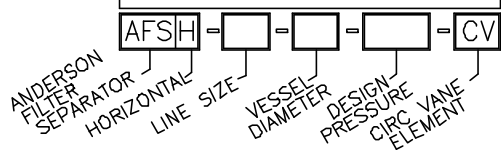


DRAWN: DEP      CHECKED: KES      SCALE: NONE      DATE: 03/16/96      FILE NO.: A400-15.DWG



- \* REDUCED CLOSURE
- \* CIRCULAR VANE
- \* TWIN VERTICAL SUMPS

**HOW TO SPECIFY**



**STANDARD MATERIALS**

HEADS	SA-516-70
SHELL	SA-106-B/C / SA-516-70
FLANGES	SA-105
FITTINGS	SA-105
PIPE	SA-106-B/C
SUPPORTS	SA-36 / SA-285
CLOSURE	CARBON STEEL

MODEL AFS-	VESSEL DIAMETER	SUMP DIAMETER	INLET/OUTLET	A(4)	B	C(4)	D	E(4)	F	G	H
10-24	24" OD	10-3/4	10"	135	93	21	43	76	56	24	54
12-30	30" ID	10-3/4	12"	144	96	23	44	83	60	24	54
12-32	32" ID	12-3/4	12"	146	96	23	44	84	60	24	54
12-34	34" ID	12-3/4	12"	148	96	24	44	87	62	24	54
14-36	36" ID	12-3/4	14"	151	99	24	45	88	62	24	54
14-38	38" ID	12-3/4	14"	153	99	25	45	99	72	24	54
14-40	40" ID	12-3/4	14"	153	99	25	45	100	72	24	54
16-42	42" ID	14	16"	160	102	26	46	101	72	24	54
18-48	48" ID	14	18"	167	105	29	47	108	74	24	54
20-54	54" ID	16	20"	172	108	31	48	115	78	24	60
24-60	60" ID	16	24"	182	114	32	50	120	80	24	60
24-66	66" ID	16	24"	186	114	34	50	127	84	24	60
24-72	72" ID	18	24"	190	114	35	50	132	86	24	60
28-78	78" ID	18	28"	198	120	39	52	141	90	24	66
28-84	84" ID	18	28"	202	120	40	52	146	92	24	66
30-90	90" ID	18	30"	206	120	42	53	153	96	24	66
30-96	96" ID	18	30"	210	120	43	53	156	96	24	66

**NOTES:**

- 1.) DESIGNED, FABRICATED AND STAMPED IN ACCORDANCE WITH ASME CODE SECTION VIII, DIVISION I.
- 2.) SEPARATION VANES AVAILABLE IN CARBON STEEL 304-L & 316-L STAINLESS STEEL, OPTIONAL ALLOYS UPON REQUEST.
- 3.) SPECIAL MATERIALS, CONFIGURATIONS, AND HIGHER DESIGN PRESSURES AVAILABLE UPON REQUEST.
- 4.) ADD VALUES IN TABLE 1 TO DIM'S A, C, & E FOR FLANGE RATINGS HIGHER THAN 150#.
- 5.) FILTER SEPARATOR ALSO AVAILABLE WITH FULL OPENING CLOSURE AND/OR BARREL SUMP.
- 6.) DIMENSIONS ARE IN INCHES
- 7.) DIMENSION ARE NOT TO BE USED FOR CONSTRUCTION

TABLE 1: (SEE NOTE 4)

NOZZLE SIZE	ANSI B16.5 FLG		
	300#	600#	900#
2"	0	2	2
3"	1	3	3
4"	2	4	4
6"	2	6	6
8"	1	4	6
10"	2	6	8
12"	3	5	7
14"	4	9	10
16"	4	10	10
18"	3	8	10
20"	4	9	12
24"	5	11	14
30"	6	12	14

TABLE 2: STANDARD OPENINGS

ITEM	QTY	SIZE	DESCRIPTION
1	4	3/4"	GAGE GLASS
2	4	1"	L.L.C.
3	2	1"	SYPHON DRAINS
4	2	2"	CLEANOUT
5	1	1"	VENT
6	1	1"	HYDRO DRAIN
7	2	1/2"	DIFF PRESS
8	1	1/2"	PRESS GAGE
9	1	1/2"	INSTRMNT GAS

ALL STANDARD OPENINGS ARE COUPLINGS

A.S.M.E. CODE STAMPS

