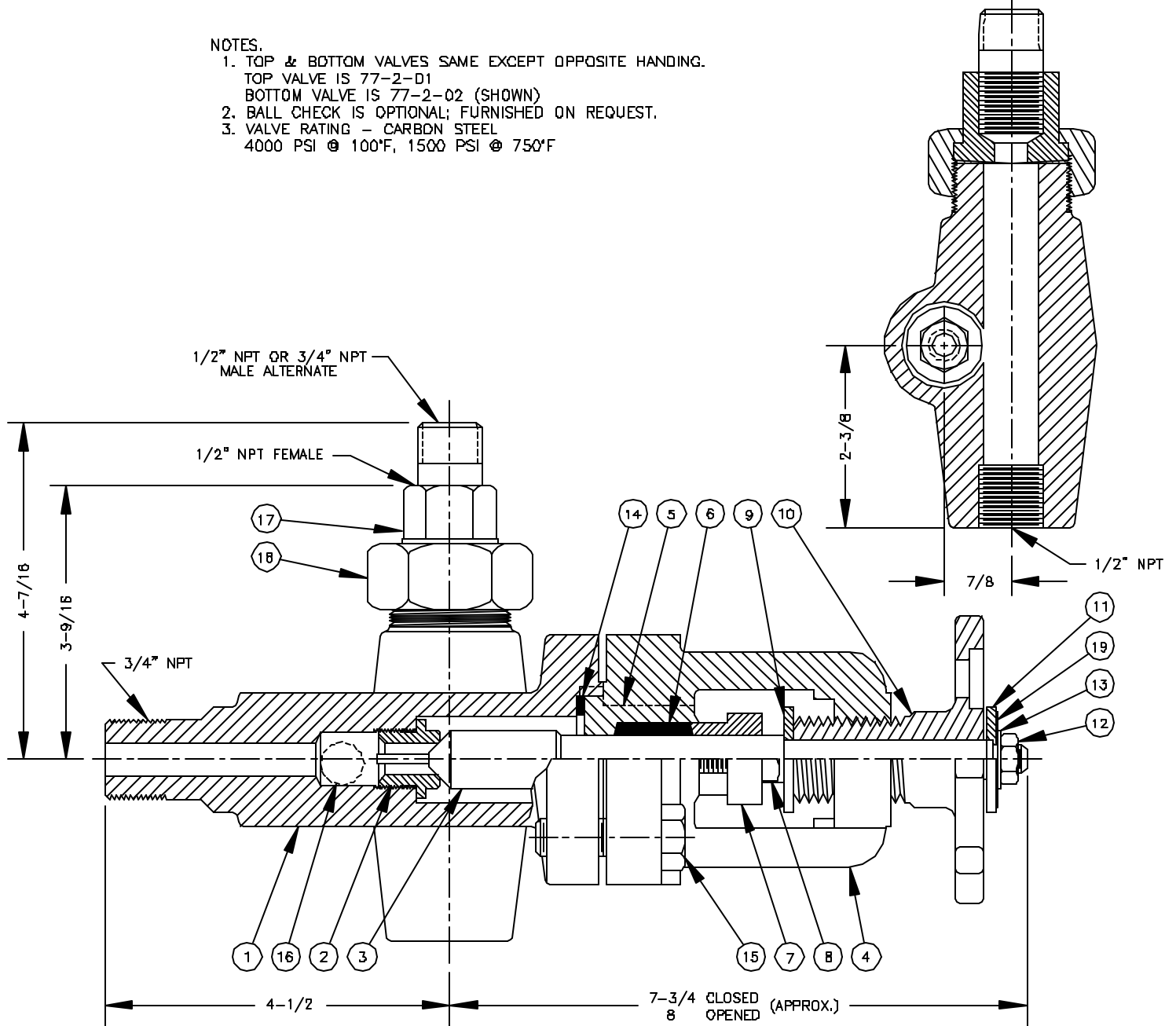


BILL OF MATERIAL

PIECE NO.	NAME OF PART	QTY.	77-2- -A			77-2- -T		
			MATERIAL	PART NO.	REMARKS	MATERIAL	PART NO.	REMARKS
1	VALVE BODY TOP	1	STEEL	L-503-A5	ASTM A105	316L SS	L-567-A5	ASTM A182
2	VALVE BODY BCT.	1	416 SS	L-504-A5		316 SS	L-568-A5	
3	SEAT	1	416 SS	P-125-U3	QQ-S-763	316 SS	P-125-T2	QQ-S-763
4	STEM	1	416 SS	P-8680-U3	QQ-S-763	316 SS	P-8680-T2	QQ-S-763
5	YOKE	1	STEEL	L-264-B	S-24093	STEEL	L-325-B	S-24093
6	SLEEVE-INSERT	1	-----	-----		316 SS	P-6711-TL2	
7	PACKING	6	GPH/NICR	G-259		GPH/NICR	G-259	
8	PACKING GLAND	1	STEEL	V-18257-3-AL4	S-24093	STEEL	V-18257-3-AL4	S-24093
9	CAP SCREW-GLAND	2	STEEL	P-6153-B71	ASTM A193	STEEL	P-6153-B71	ASTM A193
10	WASHER-STEM	1	STEEL	P-6195-A4		STEEL	P-6195-A4	
11	HANDWHEEL	1	ALUM-BR	V-7730-F6	ASTM B148	ALUM-BR	V-7730-F6	ASTM B148
12	WASHER-HANDWHEEL	1	STEEL	P-6196-A4		STEEL	P-6196-A4	
13	NUT-STEM	1	STEEL	V-11061-A12		STEEL	V-11061-A12	
14	WASHER-STEM NUT	1	STEEL	P-33-2-A1		STEEL	P-33-2-A1	
15	SPIRAL GASKET	1	SS/CHLORO.	P-5643-T		SS/CHLORO.	P-5643-T	
16	CAP SCREW-YOKE	4	STEEL	P-6475-B71	ASTM A193	STEEL	P-6475-B71	ASTM A193
17	BALL CHECK	1	440 SS	P-1-1		316 SS	P-1-T2	
18	TAILPIECE, 1/2" FEMALE	1	STEEL	P-198-A6	ASTM A108	316 SS	P-198-T2	ASTM A276
	TAILPIECE, 1/2" MALE			P-400-A6			P-400-T2	
	TAILPIECE, 3/4" MALE			P-120-A6			P-120-T2	
19	NUT-TAILPIECE	1	STEEL	P-70-6-A6	ASTM A108	STEEL	P-70-6-A6	ASTM A108
19	RATING TAG	1	SS	V-8981-77		SS	V-18716-77	

NOTES.

- TOP & BOTTOM VALVES SAME EXCEPT OPPOSITE HANDING.
TOP VALVE IS 77-2-D1
BOTTOM VALVE IS 77-2-D2 (SHOWN)
- BALL CHECK IS OPTIONAL; FURNISHED ON REQUEST.
- VALVE RATING - CARBON STEEL
4000 PSI @ 100°F, 1500 PSI @ 750°F



5	REDRAWN & UPDATED	7/15/96		#77 VALVE NON-UNION TANK CONN.	JERGUSON GAGE & VALVE CO. STRONGSVILLE, OHIO, U.S.A.	DRAWN	FILE NO.
4	REDRAWN & UPDATED	3/15/96				CHECKED	DRAWING NO.
3	REDRAWN & UPDATED	8/25/92				MJK	77-2-02
2	GENERAL REVISION	9/12/85				APPROVED	
SYM	REVISION	DATE	APP			SCALE NONE	DATE 7/15/96