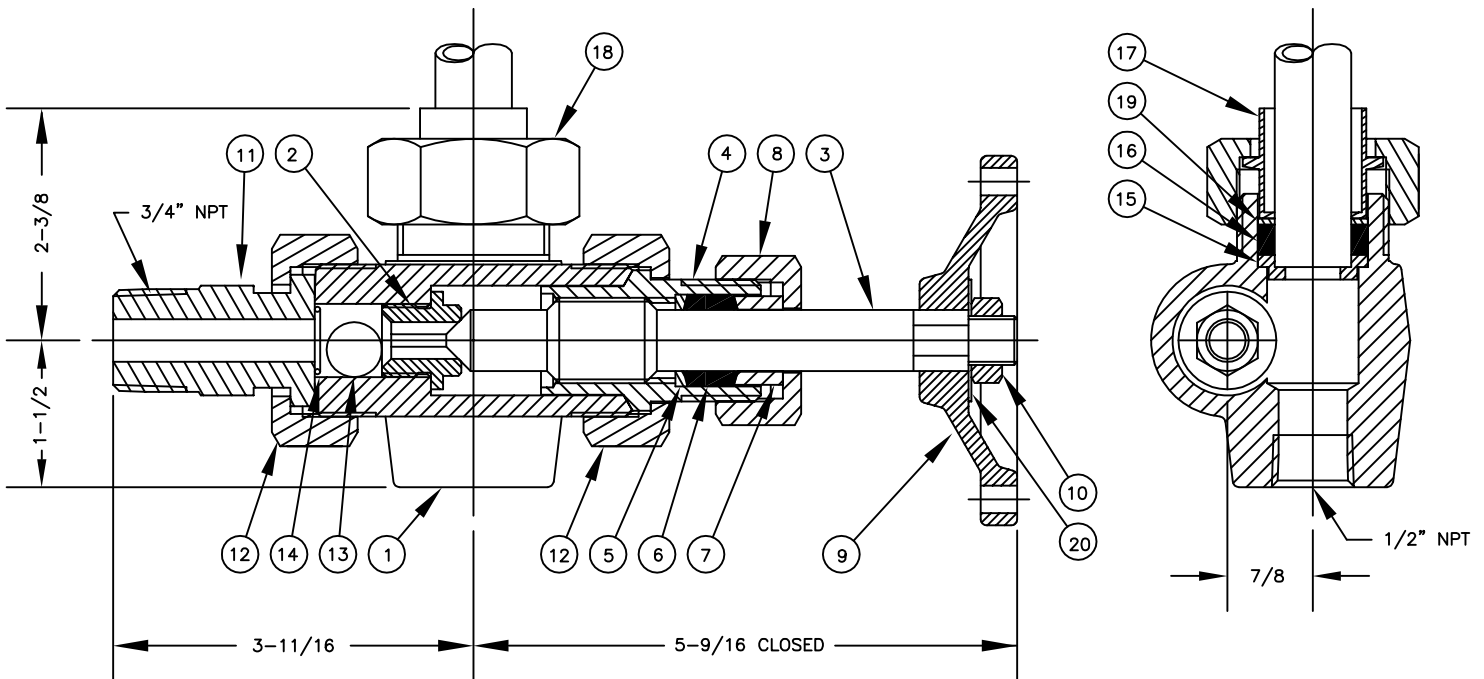


BILL OF MATERIAL

| PIECE NO. | NAME OF PART | QTY. | 56-1-6-02-A | | | 56-1-6-02-T | | |
|-----------|---------------------------|------|-------------|-------------|-----------|-------------|-------------|-----------|
| | | | MATERIAL | PART NO. | REMARKS | MATERIAL | PART NO. | REMARKS |
| 1 | VALVE BODY-TOP | 1 | STEEL | V-11200-A5 | ASTM A105 | 316L SS | V-11200-TL1 | ASTM A182 |
| | VALVE BODY-BOT. | | | V-11201-A5 | ASTM A105 | | V-11201-TL1 | ASTM A182 |
| 2 | SEAT | 1 | 416 SS | P-125-U3 | QQ-S-763 | 316 SS | P-125-T2 | QQ-S-763 |
| 3 | STEM | 1 | 416 SS | S-121-U3 | QQ-S-763 | 316 SS | S-121-T2 | QQ-S-763 |
| 4 | SLEEVE | 1 | STEEL | P-182-A6 | ASTM A108 | 316 SS | P-182-T2 | ASTM A276 |
| 5 | PACKING RING | 1 | STEEL | P-254-1-A6 | ASTM A108 | 316 SS | P-254-1-T2 | QQ-S-763 |
| 6 | PACKING | 4 | GPH/NICR | G-259 | | GPH/NICR | G-259 | |
| 7 | GLAND | 1 | STEEL | P-39-A6 | ASTM A108 | STEEL | P-39-A6 | ASTM A108 |
| 8 | NUT-GLAND | 1 | STEEL | P-70-3-A6 | ASTM A108 | STEEL | P-70-3-A6 | ASTM A108 |
| 9 | HANDWHEEL | 1 | MAL. IRON | PD-325-D1 | | MAL. IRON | PD-325-D1 | |
| 10 | NUT-STEM | 1 | STEEL | P-78-6-A12 | ASTM A563 | STEEL | P-78-6-A12 | ASTM A563 |
| 11 | TAILPIECE, 3/4" MALE ADJ. | 1 | STEEL | V-12009-A6 | ASTM A108 | 316 SS | V-12009-T2 | ASTM A276 |
| 12 | NUT-TAILPIECE | 2 | STEEL | P-70-48-A6 | ASTM A108 | STEEL | P-70-48-A6 | ASTM A108 |
| 13 | BALL CHECK | 1 | 440 SS | P-1-I | | 316 SS | P-1-T2 | |
| 14 | BALL CHECK STOP | 1 | 316 SS | V-13113-T | | 316 SS | V-13113-T | |
| 15 | RING-GLASS-TOP | 1 | STEEL | P-1155-3-A6 | ASTM A108 | 316 SS | P-1155-3-T2 | ASTM A276 |
| | RING-GLASS-BOT. | | | P-1173-3-A6 | ASTM A108 | | P-1173-3-T2 | QQ-S-763 |
| 16 | PACKING | 1 | BUNA-N | G-24 | | BUNA-N | G-24 | |
| 17 | GLAND-GLASS | 1 | STEEL | V-11208-A6 | ASTM A108 | 316 SS | V-11208-T2 | ASTM A276 |
| 18 | NUT-GLAND | 1 | STEEL | P-70-6-A6 | ASTM A108 | STEEL | P-70-6-A6 | ASTM A108 |
| 19 | GASKET | 1 | TEFLON | V-11211 | | TEFLON | V-11211 | |
| 20 | RATING TAG | 1 | SS | V-8981-56 | | SS | V-18716-56 | |

NOTES:

- TOP & BOTTOM VALVES SAME EXCEPT OPPOSITE HANDING. TOP VALVE IS 56-1-6-02. BOTTOM VALVE IS 56-1-6-02 (SHOWN)
- GUARD ROD OR PLASTIC TUBULAR PROTECTORS FURNISHED ON REQUEST.



| | | | |
|-----|-------------------|----------|-----|
| 11 | REDRAWN & UPDATED | 10/16/98 | |
| 10 | REDRAWN & UPDATED | 7/15/96 | |
| 9 | REDRAWN & UPDATED | 3/15/96 | |
| 8 | REDRAWN & UPDATED | 8/3/92 | |
| SYM | REVISION | DATE | APP |

#56 OFFSET VALVE P/C
3/4" GAGE GLASS
UNION TANK CONN.

JERGUSON
GAGE & VALVE CO.
STRONGSVILLE, OHIO, U.S.A.

SCALE NONE DATE 10/16/98

| | |
|----------------|-------------|
| DRAWN TAP | FILE NO. |
| CHECKED MJK | DRAWING NO. |
| APPROVED | 56-1-6-02 |
| | REV. 11 |