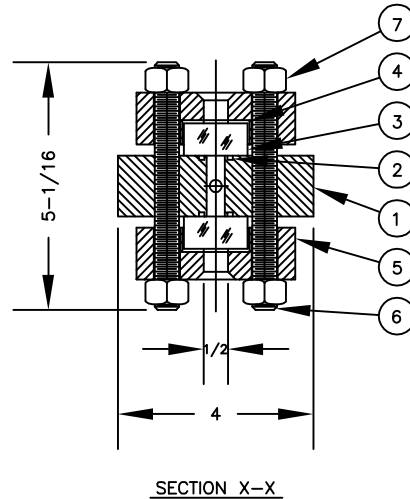
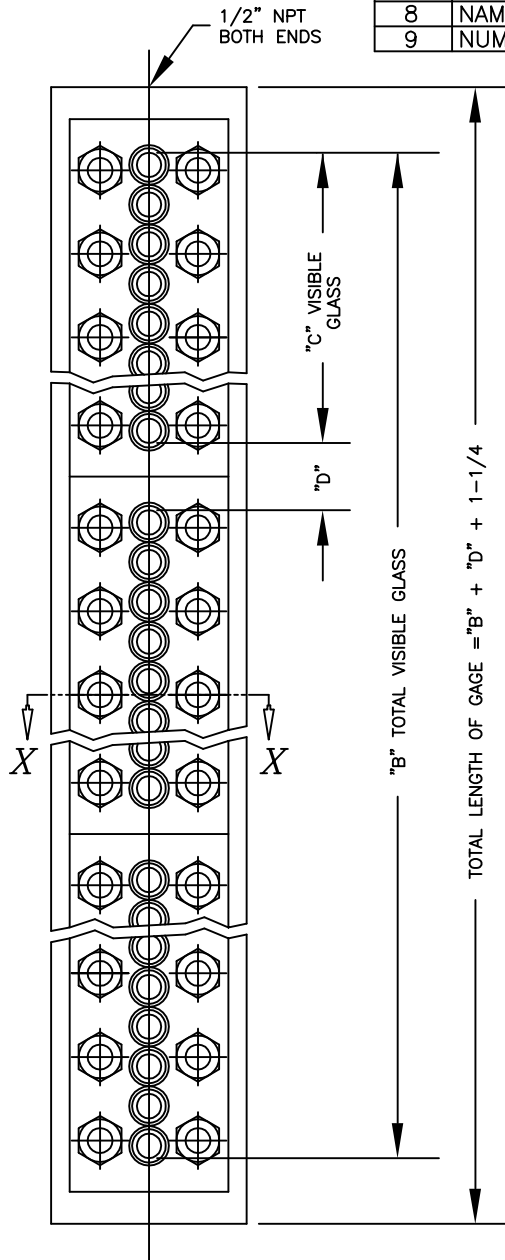


BILL OF MATERIAL

PIECE NO.	NAME OF PART	QTY.	MATERIAL	PART NO.	REMARKS
1	CHAMBER	1	STEEL	V-9462--A6	ASTM A108
2	GASKET		VITON A	G-149	2 PER VISION PORT
3	GLASS	2/ SEC.	TEMPERED	V-16758--	
4	CUSHION		IFG5500	V-18980--	
5	COVER	SEE CHT.	STEEL	V-9461--B	ASTM A108
6	STUD		STEEL	P-4982-B71	ASTM A193
7	NUT		STEEL	X171510	ASTM A194
8	NAME PLATE	1	BRASS	P-447-1	
9	NUMBER PLATE	1	BRASS	P-1160-1-F	



NOTES:

1. GAGES WITH CARBON STEEL AND 316 SS CHAMBERS ARE RATED FOR 10,000 PSI AT 400°F. GAGES WITH 304 SS CHAMBERS ARE RATED FOR 6600 PSI AT 400°F.
2. STANDARD GAGES FURNISHED WITH 1/2" NPT CONNECTIONS ARE RATED FOR 6000 PSI AT 400°F. FOR WORKING PRESSURES OVER 6000 PSI, GAGES WITH CONE-TYPE JOINTS OR SOCKETS FOR WELDING ARE RECOMMENDED.
3. OTHER O-RING COMPOUNDS ARE AVAILABLE.
4. STATE MAXIMUM WORKING PRESSURE AND TEMPERATURE WHEN ORDERING.
5. STANDARD FACTORY HYDROTEST PRESSURE IS 1.5 TIMES THE RATED GAGE GLASS PRESSURE.

SIZE NO.	QTY. PER SECT.		DIM. "C" IN INCHES	DIM. "D" IN INCHES	NUMBER OF SECTIONS								
	STUD	NUT			DIMENSION "B" IN INCHES								
					1	2	3	4	5	6	7	8	9
1	6	12	3 5/8	1 5/8	3 5/8	8 7/8	14 1/8	19 3/8	24 5/8	29 7/8	35 1/8	40 3/8	45 5/8
2	6	12	4 7/16	1 13/16	4 7/16	10 11/16	16 15/16	23 3/16	29 7/16	35 11/16	41 15/16	48 3/16	54 7/16
3	8	16	5 1/4	2	5 1/4	12 1/2	19 3/4	27	34 1/4	41 1/2	48 3/4	56	63 1/4
4	10	20	6 1/16	2 3/16	6 1/16	14 5/16	22 9/16	30 13/16	39 1/16	47 5/16	55 9/16	63 13/16	72 1/16
5	10	20	7 11/16	1 11/16	7 11/16	17 1/16	26 7/16	35 13/16	45 3/16	54 9/16	63 15/16	73 5/16	82 11/16
6	12	24	8 1/2	2 1/8	8 1/2	19 1/8	29 3/4	40 3/8	51	61 5/8	72 1/4	82 7/8	93 1/2
7	14	28	10 1/8	1 5/8	10 1/8	21 7/8	33 5/8	45 3/8	57 1/8	68 7/8	80 5/8	92 3/8	104 1/8
8	16	32	11 3/4	1 5/8	11 3/4	25 1/8	38 1/2	51 7/8	65 1/4	78 5/8	92	105 3/8	118 3/4
9	16	32	12 9/16	1 9/16	12 9/16	26 11/16	40 13/16	54 15/16	69 1/16	83 3/16	97 5/16	111 7/16	125 9/16

12	REDRAWN & UPDATED	9/30/04	
11	COVER NOW PER ASTM A108	5/29/98	
10	REDRAWN & UPDATED	7/11/96	
9	REDRAW & UPDATE "C&D" DIMS.	8/8/95	
SYM	REVISION	DATE	APP

SERIES T-51 GAGES
1/2" NPT END CONN.

JERGUSON
GAGE & VALVE CO.
STRONGSVILLE, OHIO, U.S.A.

DRAWN TAP	FILE NO.
CHECKED MJK	DRAWING NO. 51-40
APPROVED	REV. 12

SCALE NONE DATE 9/30/04