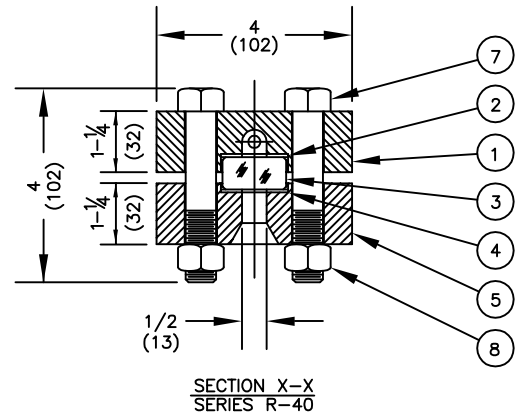
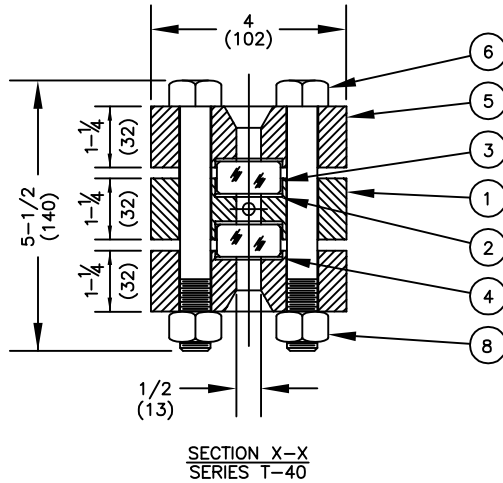
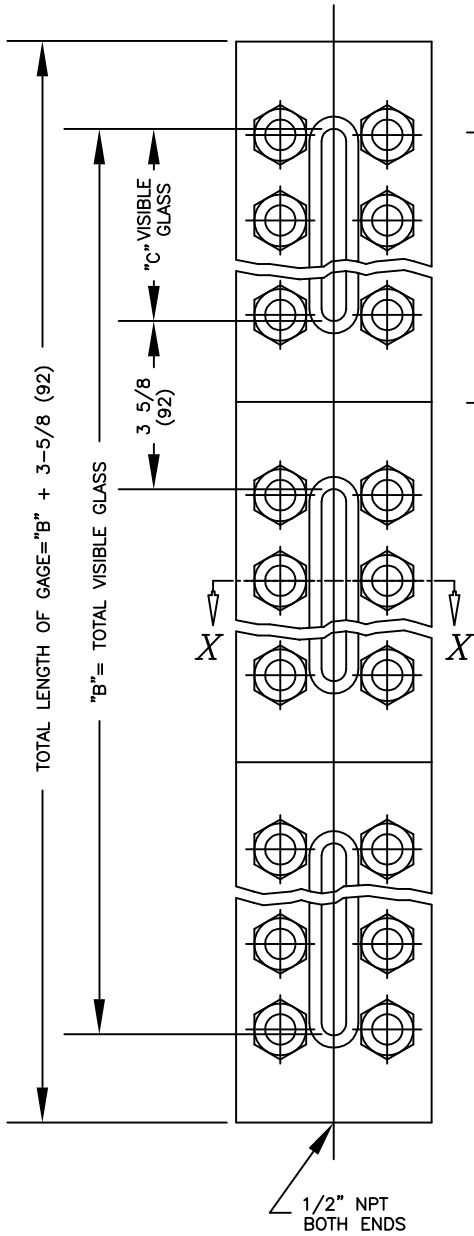


**BILL OF MATERIAL**

PIECE NO.	NAME OF PART	QTY.		MATERIAL	PART NO.	REMARKS
		T	R			
1	CHAMBER TRANS REFLEX	1	1	STEEL	V-8360- -A6	ASTM A108
2	GASKET			IFG5500	V-19087-	ASTM A108
3	GLASS			TEMPERED GLASS	V-16756-	SEE NOTE 1
4	CUSHION			IFG5500	V-19087-	
5	COVER			STEEL	V-1612- -AL4	ASTM A108
6	BOLT			ALLOY STL	P-2772-B71	ASTM A193
7	BOLT			ALLOY STL	V-9495-B71	ASTM A193
8	NUT			STEEL	P-8366-2HA	ASTM A194
9	RATING TAG	1		BRASS	P-1160-1-F	

NOTE:  
1. R-40 GAGES ASSEMBLED WITH PLAIN GLASS FOR GREATER STRENGTH.



SIZE NO.	QTY. PER SECT.		DIM. "C" IN INCHES	NUMBER OF SECTIONS				
	BOLT	NUT		DIMENSION "B" IN INCHES				
				1	2	3	4	5
1	6	6	3 5/8 (92)	3 5/8 (92)	10 7/8 (276)	18 1/8 (460)	25 3/8 (645)	32 5/8 (829)
2	8	8	4 5/8 (117)	4 5/8 (117)	12 7/8 (327)	21 1/8 (537)	29 3/8 (746)	37 5/8 (956)
3	8	8	5 5/8 (143)	5 5/8 (143)	14 7/8 (378)	24 1/8 (613)	33 3/8 (848)	42 5/8 (1083)
4	8	8	6 5/8 (168)	6 5/8 (168)	16 7/8 (429)	27 1/8 (689)	37 3/8 (949)	47 5/8 (1210)
5	10	10	7 3/4 (197)	7 3/4 (197)	19 1/8 (486)	30 1/2 (775)	41 7/8 (1064)	53 1/4 (1353)
6	12	12	9 (228)	9 (228)	21 5/8 (549)	34 1/4 (870)	46 7/8 (1191)	59 1/2 (1511)
7	14	14	10 1/8 (257)	10 1/8 (257)	23 7/8 (606)	37 5/8 (956)	51 3/8 (1305)	65 1/8 (1654)
8	16	16	11 3/4 (298)	11 3/4 (298)	27 1/8 (689)	42 1/2 (1080)	57 7/8 (1470)	73 1/4 (1861)
9	16	16	12 1/2 (318)	12 1/2 (318)	28 5/8 (727)	44 3/4 (1137)	60 7/8 (1546)	77 (1956)

7	CHANGED COVER SPEC TO A108	9/30/04	
6	FIXED DIM. IN SECT. VIEWS	1/10/02	
5	REDRAWN & ADDED METRICS	7/11/96	
4	REDRAWN & UPDATED, IFG5500	1/18/96	
SYM	REVISION	DATE	APP

SERIES 40 GAGES  
1/2" NPT END CONN.

**JERGUSON**  
GAGE & VALVE CO.  
STRONGSVILLE, OHIO, U.S.A.  
SCALE NONE DATE 9/30/04

DRAWN TAP	FILE NO.
CHECKED MJK	DRAWING NO.
APPROVED	40-40
	REV. 7