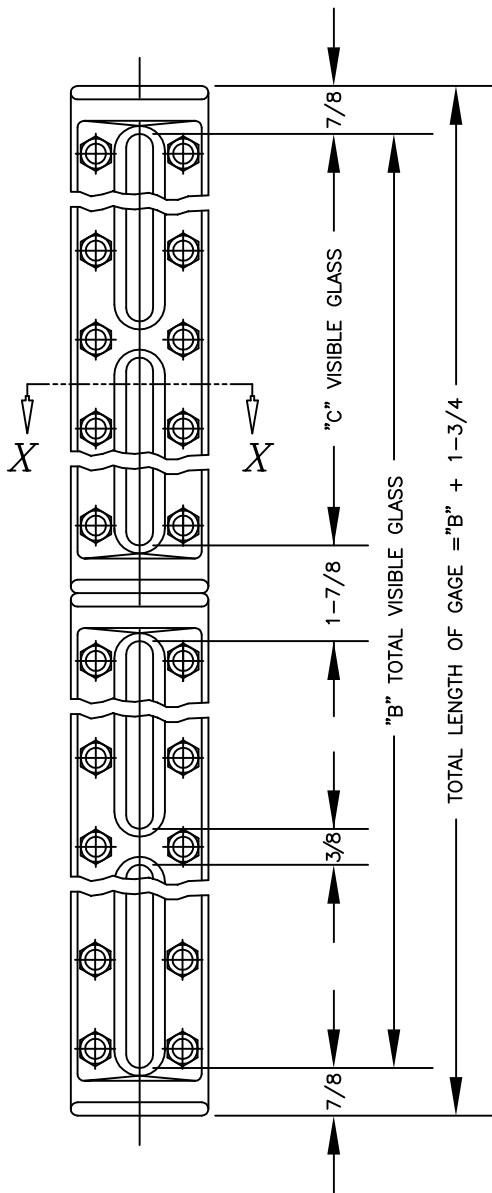
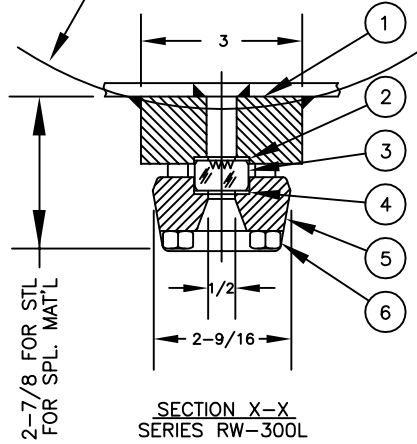


BILL OF MATERIAL

PIECE NO.	NAME OF PART	QTY.	MATERIAL	PART NO.	REMARKS
1	CHAMBER	1	STEEL	V-14812- -A40	ASTM A675
2	GASKET	1 / SECT.	IFG5500	V-19469-	
3	GLASS TRANS. REFLEX		TEMPERED GLASS	L-1412- L-1413-	
4	CUSHION		IFG5500	V-19469-	
5	COVER	1 / SECT.	STEEL	V-10974- -AL4	AISI C1040
6	BOLT	SEE CHIT.	STEEL	V-11080-B71	ASTM A193
7	RATING TAG	1	SS	V-16490-	



GAGE CAN BE FURNISHED WITH CURVED PAD TO FIT RADIUS OF TANK OR STANDPIPE.



SIZE NO.	BOLTS PER SECT.	DIM. "C" IN INCHES	NUMBER OF SECTIONS			
			DIMENSION "B" IN INCHES			
			1	2	3	4
15	18	14 1/4	14 1/4	30 3/8	46 1/2	62 1/2
18	22	17 1/4	17 1/4	36 3/8	55 1/2	74 1/2
20	24	19 1/4	19 1/4	40 3/8	61 1/2	82 1/2

NOTES:

1. RW-300L GAGES FURNISHED WITH REFLEX GLASS (SHOWN). TW-300L GAGES FURNISHED WITH TRANSPARENT GLASS.
2. DIMENSIONS OF TW-300L GAGES ARE THE SAME AS SHOWN FOR RW-300L.
3. STANDARD WELDING PAD GAGES WILL WITHSTAND LOADINGS DUE TO THE PRESSURE WITHIN THE GAGE ITSELF, BUT THEY ARE NOT DESIGNED TO REPLACE THE TANK STRENGTH LOST WHEN THE TANK WALL IS SLOTTED. IT IS THEREFORE IMPOSSIBLE TO RATE THE WELDING PAD GAGES. THE TANK FABRICATOR MUST PROVIDE SUITABLE TANK WALL REINFORCEMENT TO PREVENT THE PAD FROM BEING DISTORTED WHILE UNDER OPERATING CONDITIONS. SEE APPLICABLE JERGUSON UNIT FOR ADDITIONAL INFORMATION.

12	CHANGED FROM 12 TO 300L	5/13/05	
11	REDRAWN & UPDATED	1/15/02	
10	REDRAWN & UPDATED	7/12/96	
9	REDRAWN & UPDATED, IFG5500	1/18/96	
SYM	REVISION	DATE	APP

**SERIES 300L
WELD PAD GAGES**

**JERGUSON
GAGE & VALVE CO.
STRONGSVILLE, OHIO, U.S.A.**

SCALE NONE DATE 5/13/05

DRAWN TAP	FILE NO.
CHECKED MJK	DRAWING NO.
APPROVED	300L-W-00
	REV. 12