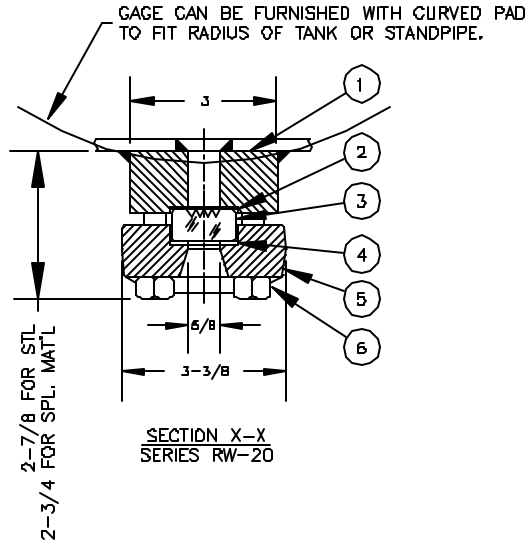
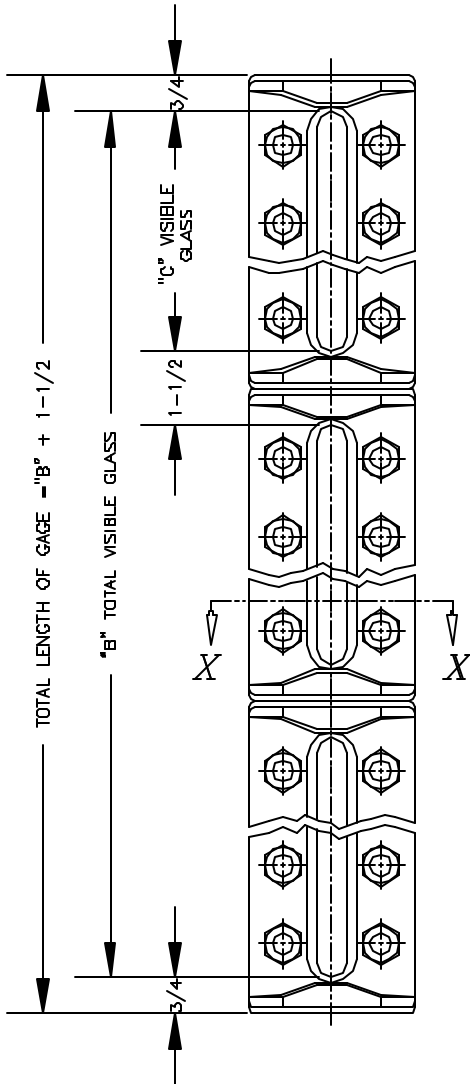


**BILL OF MATERIAL**

PIECE NO.	NAME OF PART	QTY.	MATERIAL	PART NO.	REMARKS
1	CHAMBER	1	STEEL	V-12453- -A40	ASTM A675
2	GASKET		IFG5500	V-18980-	
3	GLASS	1/ SECT.	TEMPERED GLASS	V-16756-	
	TRANS REFLEX			V-16757-	
4	CUSHION		IFG5500	V-18980-	
5	COVER		STEEL	V-2M- -A5	ASTM A105
6	BOLT	SEE CUT	STEEL	P-4527-B71	ASTM A193
7	RATING TAG	1	SS	V-16344	



SIZE NO.	BOLTS PER SECT	DIM. "C" IN INCHES	NUMBER OF SECTIONS			
			DIMENSION "B" IN INCHES			
			1	2	3	4
1	6	3 3/4	3 3/4	9	14 1/4	19 1/2
2	6	4 3/4	4 3/4	11	17 1/4	23 1/2
3	8	5 3/4	5 3/4	13	20 1/4	27 1/2
4	10	6 3/4	6 3/4	15	23 1/4	31 1/2
5	10	7 7/8	7 7/8	17 1/4	26 5/8	36
6	12	9 1/8	9 1/8	19 3/4	30 3/8	41
7	14	10 1/4	10 1/4	22	33 3/4	45 1/2
8	16	11 7/8	11 7/8	25 1/4	38 5/8	52
9	16	12 5/8	12 5/8	26 3/4	40 7/8	55

- NOTES:
- RW-20 GAGES FURNISHED WITH REFLEX GLASS (SHOWN). TW-20 GAGES FURNISHED WITH TRANSPARENT GLASS
  - DIMENSIONS OF TW-20 GAGES ARE THE SAME AS SHOWN FOR RW-20.
  - STANDARD WELDING PAD GAGES WILL WITHSTAND LOADINGS DUE TO THE PRESSURE WITHIN THE GAGE ITSELF, BUT THEY ARE NOT DESIGNED TO REPLACE THE TANK STRENGTH LOST WHEN THE TANK WALL IS SLOTTED. IT IS THEREFORE IMPOSSIBLE TO RATE THE WELDING PAD GAGES. THE TANK FABRICATOR MUST PROVIDE SUITABLE TANK WALL REINFORCEMENT TO PREVENT THE PAD FROM BEING DISTORTED WHILE UNDER OPERATING CONDITIONS. SEE APPLICABLE JERGUSON UNIT FOR ADDITIONAL INFORMATION.

10	RECHANGED COVER PART NO.	1/11/02	
9	REDRAWN & UPDATED	7/12/96	
8	REDRAWN & UPDATED, IFG5500	1/18/96	
7	REDRAWN & UPDATED	7/9/92	
SYM	REVISION	DATE	APP

SERIES 20  
WELD PAD GAGES

**JERGUSON  
GAGE & VALVE CO.**  
STRONGSVILLE, OHIO, U.S.A.

SCALE NONE    DATE 1/11/02

DRAWN TAP	FILE NO.
CHECKED MJK	DRAWING NO.
APPROVED	20-W-00
	REV. 10