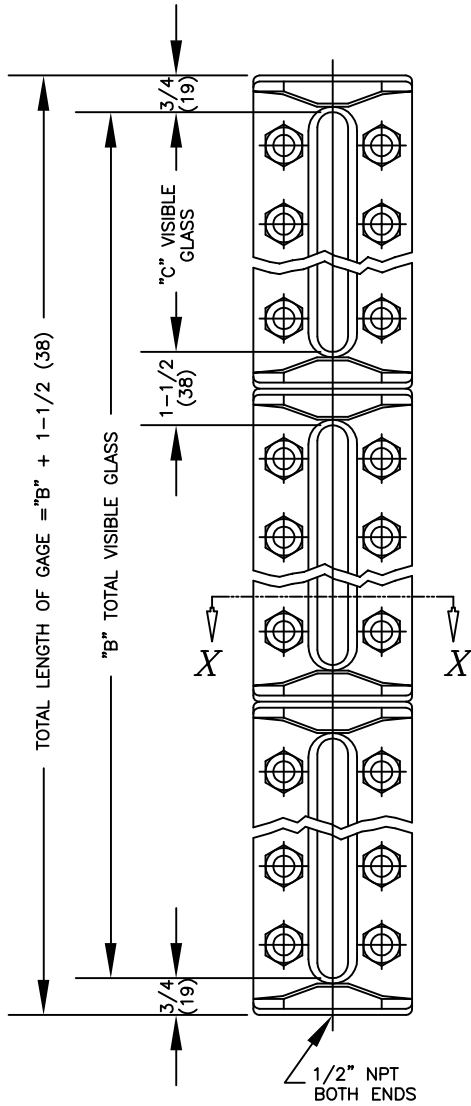


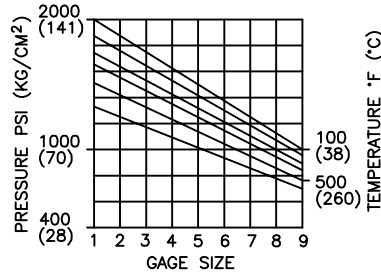
- NOTES:
 1. FOR 3/4" NPT END CONN.
 SEE DWG. NO. 20-60.
 2. DIMENSIONS IN INCHES WITH mm
 EQUIVALENTS IN PARENTHESES.



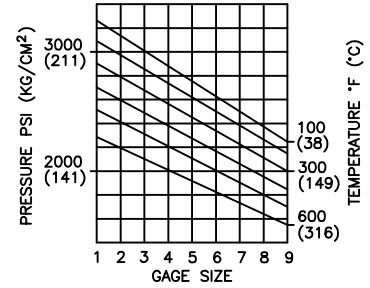
BILL OF MATERIAL

PIECE NO.	NAME OF PART	QTY.		MATERIAL	PART NO.	REMARKS
		T	R			
1	CHAMBER	1	1	STEEL	V-787- -A44	ASTM A696
	TRANS REFLEX				V-786- -A44	ASTM A696
2	GASKET			IFG5500	V-18980-	
3	GLASS	2/	1/	TEMPERED GLASS	V-16756-	
	TRANS REFLEX				V-16757-	
4	CUSHION			IFG5500	V-18980-	
5	COVER			STEEL	V-2- -A5	ASTM A105
6	BOLT			ALLOY STL	P-263-B71	ASTM A193
7	U-BOLT			ALLOY STL	P-256-B71	ASTM A193
8	NUT			STEEL	V-11062-2HA	ASTM A194
9	RATING TAG	1		SS	V-16340-	
	RATING TAG		1	SS	V-16341-	

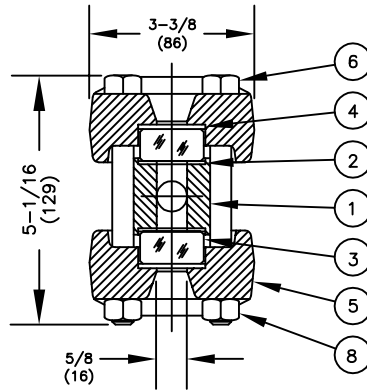
MAX. STEAM RATING FOR SERIES 20 REFLEX GAGES IS 300 W.S.P.



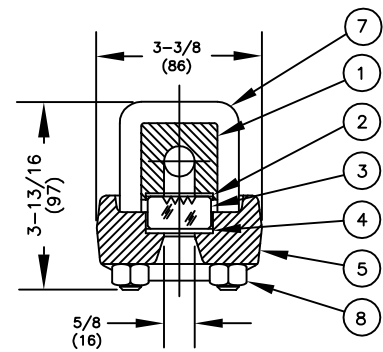
I-20



R-20



SECTION X-X
 SERIES T-20



SECTION X-X
 SERIES R-20

SIZE NO.	QTY. PER SECT.		DIM. "C" IN INCHES	NUMBER OF SECTIONS									
	BOLT	NUT		DIMENSION "B" IN INCHES									
				1	2	3	4	5	6	7	8	9	
1	6	3	6	3 3/4 (95)	3 3/4 (95)	9 (229)	14 1/4 (362)	19 1/2 (495)	24 3/4 (629)	30 (762)	35 1/4 (895)	40 1/2 (1029)	45 3/4 (1162)
2	6	3	6	4 3/4 (121)	4 3/4 (121)	11 (279)	17 1/4 (438)	23 1/2 (597)	29 3/4 (756)	36 (914)	42 1/4 (1073)	48 1/2 (1232)	54 3/4 (1391)
3	8	4	8	5 3/4 (146)	5 3/4 (146)	13 (330)	20 1/4 (514)	27 1/2 (699)	34 3/4 (883)	42 (1067)	49 1/4 (1251)	56 1/2 (1435)	63 3/4 (1619)
4	10	5	10	6 3/4 (171)	6 3/4 (171)	15 (381)	23 1/4 (591)	31 1/2 (800)	39 3/4 (1010)	48 (1219)	56 1/4 (1429)	64 1/2 (1638)	72 3/4 (1848)
5	10	5	10	7 7/8 (200)	7 7/8 (200)	17 1/4 (438)	26 5/8 (676)	36 (914)	45 3/8 (1153)	54 3/4 (1391)	64 1/8 (1629)	73 1/2 (1867)	82 7/8 (2105)
6	12	6	12	9 1/8 (232)	9 1/8 (232)	19 3/4 (502)	30 3/8 (772)	41 (1041)	51 5/8 (1311)	62 1/4 (1581)	72 7/8 (1851)	83 1/2 (2121)	94 1/8 (2391)
7	14	7	14	10 1/4 (260)	10 1/4 (260)	22 (559)	33 3/4 (857)	45 1/2 (1156)	57 1/4 (1454)	69 (1753)	80 3/4 (2051)	92 1/2 (2350)	104 1/4 (2648)
8	16	8	16	11 7/8 (302)	11 7/8 (302)	25 1/4 (641)	38 5/8 (981)	52 (1321)	65 3/8 (1661)	78 3/4 (2000)	92 1/8 (2340)	105 1/2 (2680)	118 7/8 (3019)
9	16	8	16	12 5/8 (321)	12 5/8 (321)	26 3/4 (679)	40 7/8 (1038)	55 (1397)	69 1/8 (1756)	83 1/4 (2115)	97 3/8 (2473)	111 1/2 (2832)	125 5/8 (3191)

10	CORRECTED DIMENSION	11/23/04	
9	UPDATED COVER MATERIAL	7/11/01	
8	ADDED SHROUDED COVER	10/15/98	
7	UPDATED & ADDED METRICS	5/29/96	
SYM	REVISION	DATE	APP

SERIES 20 GAGES
 1/2" NPT END CONN.

JERGUSON
 GAGE & VALVE CO.
 STRONGSVILLE, OHIO, U.S.A.

DRAWN TAP	FILE NO.
CHECKED MJK	DRAWING NO.
APPROVED	20-40
SCALE NONE	DATE 11/23/04
	REV. 10