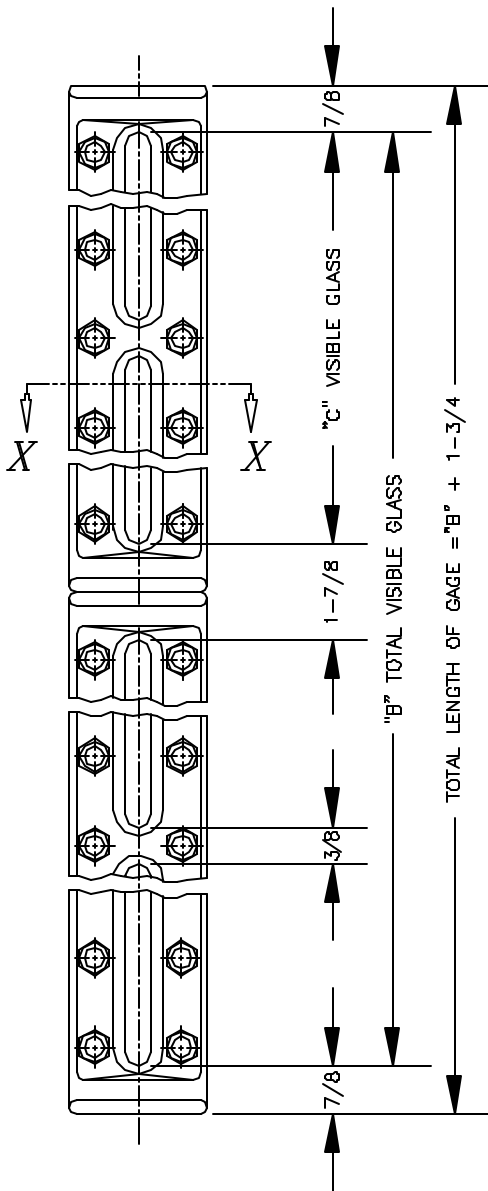
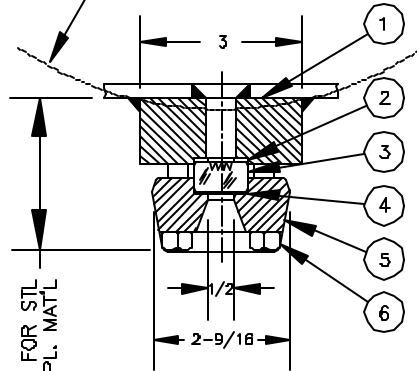


**BILL OF MATERIAL**

PIECE NO.	NAME OF PART	QTY.	MATERIAL	PART NO.	REMARKS
1	CHAMBER	1	STEEL	V-14812- -A40	ASTM A675
2	GASKET		IFG5500	V-19469-	
3	GLASS	TRANS. REFLEX	TEMPERED GLASS	L-1412- L-1413-	
4	CUSHION		IFG5500	V-19469-	
5	COVER		STEEL	V-10974- -AL4	AISI C1040
6	BOLT	SEE CHIT.	STEEL	V-11080-B71	ASTM A193
7	RATING TAG	1	SS	V-16490-	



GAGE CAN BE FURNISHED WITH CURVED PAD TO FIT RADIUS OF TANK OR STANDPIPE.



SECTION X-X  
SERIES RW-12

SIZE NO.	BOLTS PER SECT	DIM. "C" IN INCHES	NUMBER OF SECTIONS			
			DIMENSION "B" IN INCHES			
			1	2	3	4
15	18	14 1/4	14 1/4	30 3/8	48 1/2	62 1/2
18	22	17 1/4	17 1/4	36 3/8	55 1/2	74 1/2
20	24	19 1/4	19 1/4	40 3/8	61 1/2	82 1/2

**NOTES.**

1. RW-12 GAGES FURNISHED WITH REFLEX GLASS (SHOWN). TW-12 GAGES FURNISHED WITH TRANSPARENT GLASS.
2. DIMENSIONS OF TW-12 GAGES ARE THE SAME AS SHOWN FOR RW-12.
3. STANDARD WELDING PAD GAGES WILL WITHSTAND LOADINGS DUE TO THE PRESSURE WITHIN THE GAGE ITSELF, BUT THEY ARE NOT DESIGNED TO REPLACE THE TANK STRENGTH LOST WHEN THE TANK WALL IS SLOTTED. IT IS THEREFORE IMPOSSIBLE TO RATE THE WELDING PAD GAGES. THE TANK FABRICATOR MUST PROVIDE SUITABLE TANK WALL REINFORCEMENT TO PREVENT THE PAD FROM BEING DISTORTED WHILE UNDER OPERATING CONDITIONS. SEE APPLICABLE JERGUSON UNIT FOR ADDITIONAL INFORMATION.

11	REDRAWN & UPDATED	1/15/02	
10	REDRAWN & UPDATED	7/12/96	
9	REDRAWN & UPDATED, IFG5500	1/18/96	
SYM	REVISION	DATE	APP

SERIES 12  
WELD PAD GAGES

**JERGUSON**  
**GAGE & VALVE CO.**  
STRONGSVILLE, OHIO, U.S.A.

DRAWN	FILE NO.
TAP	DRAWING NO.
CHECKED	12-W-00
MJK	
APPROVED	REV. 11

SCALE NONE DATE 1/15/02